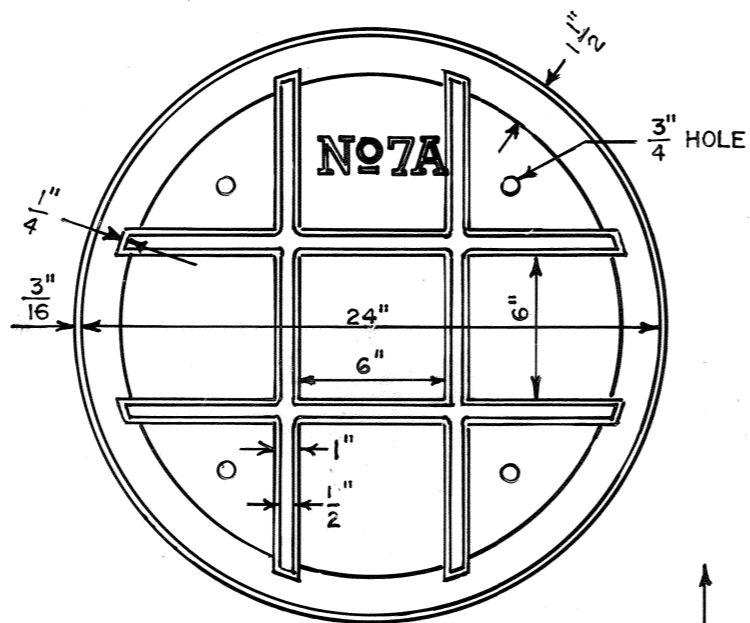
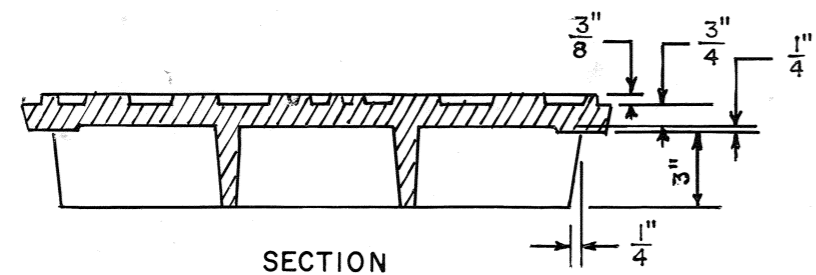


TOP PLAN

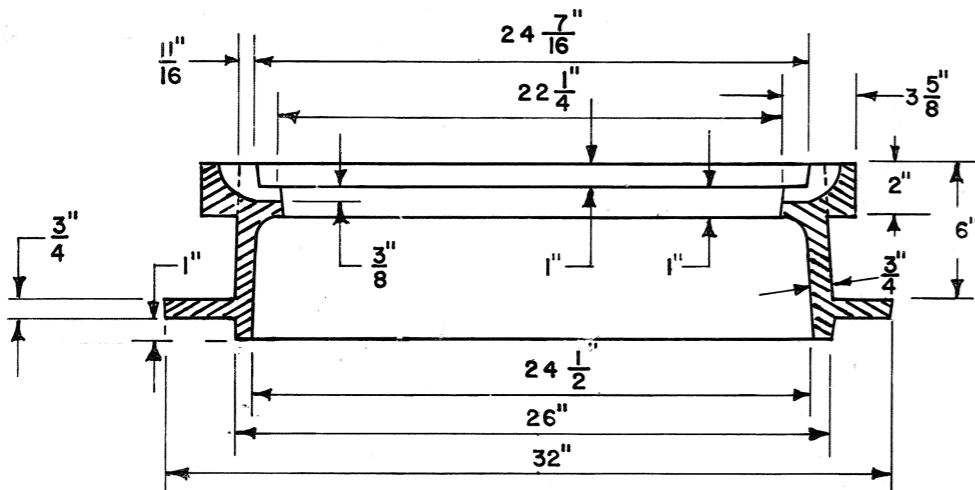


BOTTOM PLAN

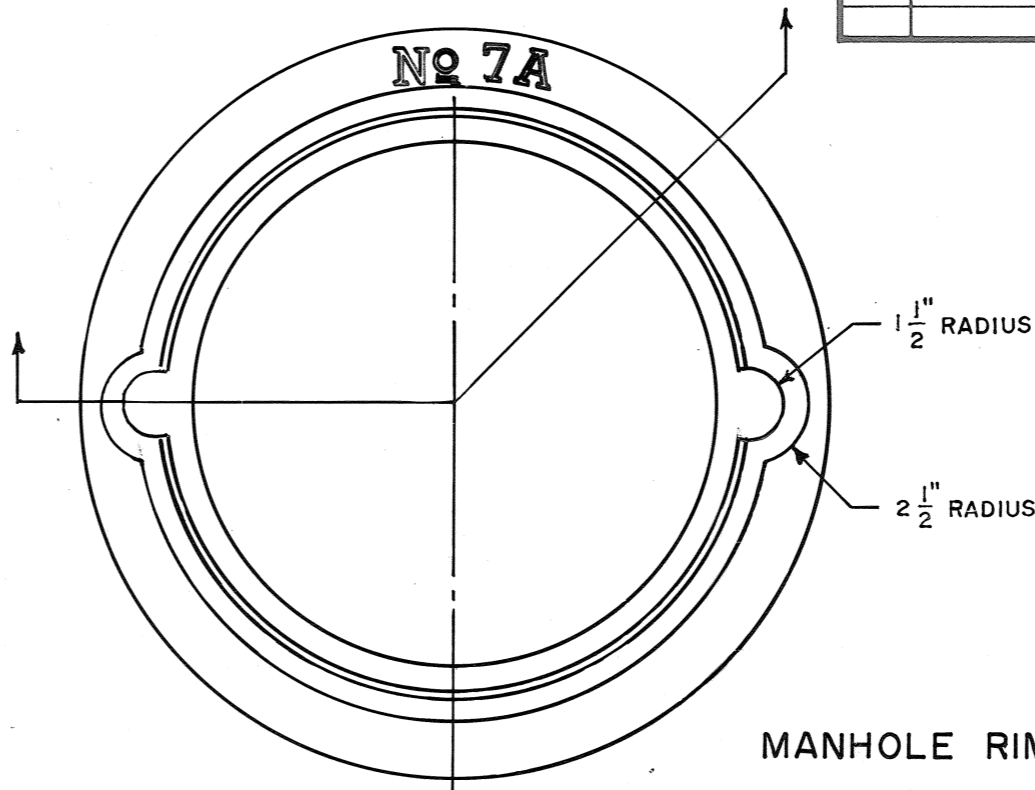
MANHOLE COVER NO. 7A



SECTION

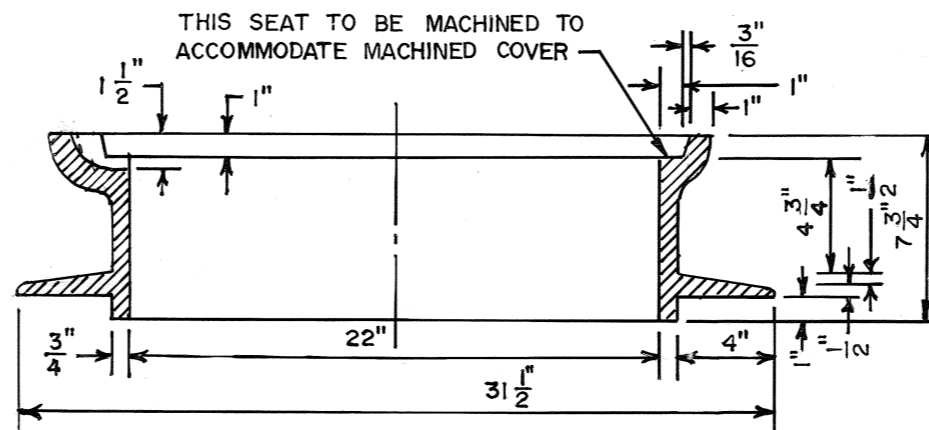


OPTIONAL RIM SECTION
NOT TO SCALE



TOP PLAN

MANHOLE RIM NO. 7A



SECTION

THIS SEAT TO BE MACHINED TO ACCOMMODATE MACHINED COVER

REVISIONS

NO.	DATE	BY	REMARKS
1	5-7-85	L.R.H.	REMOVED DIV. OF PUBLIC WORKS (T.BLK.)
2	2-4-88	D.H.G.	REMOVED DEPARTMENT (T.BLK.)
3	6-14-88	D.H.G.	OPTIONAL RIM SECTION <i>gc</i>
4	2-14-11	L.R.H.	REVISED WEIGHTS <i>gc</i>

CONVERSIONS

ENGLISH	METRIC

NOTE: WEIGHT-COVER 150 lbs. MINIMUM
FRAME 200 lbs. MINIMUM

NOTE: IF BOLTED-DOWN RIM & COVER ARE REQUIRED, SEE CITY OF MEMPHIS DESIGN STANDARD SST-8.

CITY OF MEMPHIS
DIVISION OF ENGINEERING

DESIGN STANDARD
FOR
NO. 7A
MANHOLE RIM AND COVER

Roy Mason 12-19-79
PRINCIPAL CIVIL ENGINEER
G. S. Gammell, Jr. 1-2-80
DEPUTY DIRECTOR/ CIVIL ENGINEER DATE