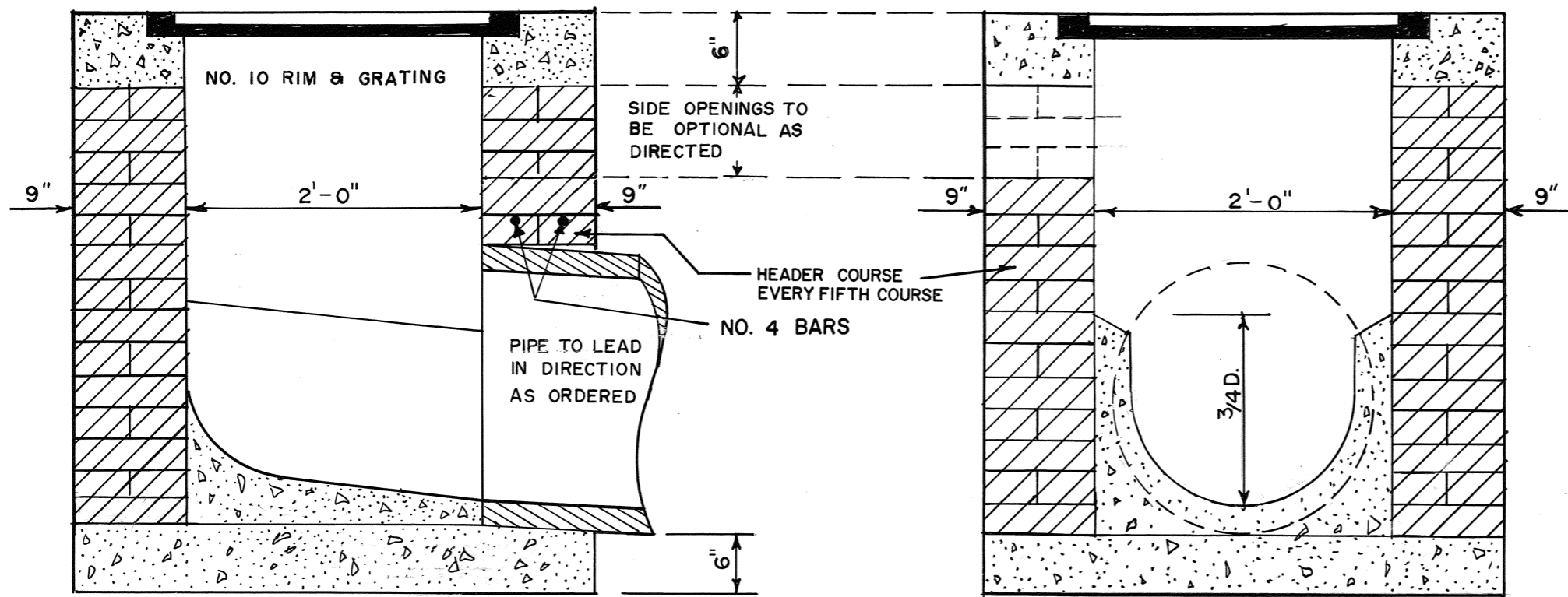
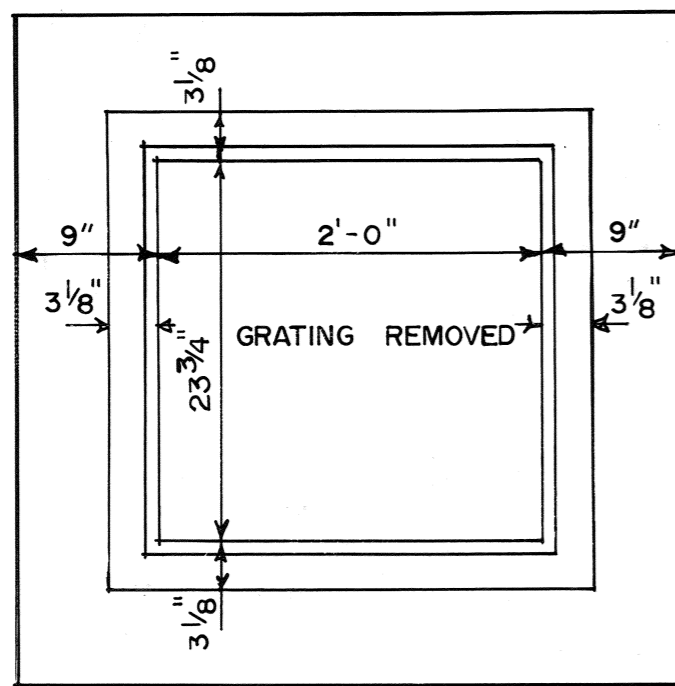


BUREAU ENGINEER DRAFTSMAN DATE SCALE



LONGITUDINAL SECTION

CROSS SECTION



PLAN

| REVISIONS | | | |
|-----------|---------|--------|--|
| NO. | DATE | BY | REMARKS |
| 1 | 5-30-85 | L.R.H. | REMOVED DIV. OF PUBLIC WORKS (T. BLK.) |
| 2 | 7-21-87 | D.H.G. | ADD: NO. 4 BARS; CLASS 'A' |
| 3 | 2-8-88 | D.H.G. | REMOVED DEPARTMENT (T. BLK.) |
| | | | |
| | | | |
| | | | |
| | | | |
| | | | |
| | | | |
| | | | |

| CONVERSIONS | |
|-------------|--------|
| ENGLISH | METRIC |
| | |
| | |
| | |
| | |
| | |
| | |
| | |
| | |
| | |
| | |

NOTE: Conc. to be CLASS 'A'

CITY OF MEMPHIS
DIVISION OF ENGINEERING

DESIGN STANDARD
FOR
INLET # 10

| | |
|--|---|
| <p style="text-align: right;"><i>Ray Mason</i> PRINCIPAL CIVIL ENGINEER</p> <p style="text-align: right;"><i>J. G. Jamieson</i> DEPUTY DIRECTOR/CIVIL ENGINEER</p> | <p>7-5-79 DATE</p> <p>7-5-79 DATE</p> |
|--|---|