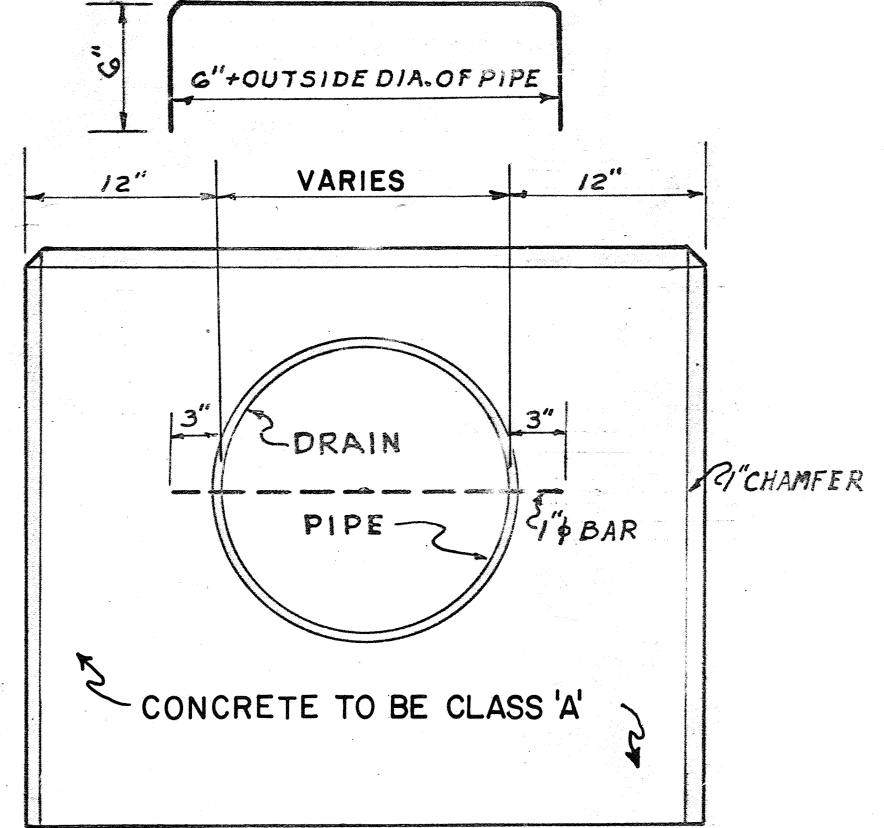


SIDE ELEVATION

SIZE	H	0.35 x H	WIDTH	CU. YDS. CONCRETE
15"	2'-9"	11 1/2"	3'-3"	0.22
18"	3'-0"	1'-0"	3'-6"	0.30
24"	3'-6"	1'-3"	4'-0"	0.34
27"	3'-9"	1'-3"	4'-3"	0.39
30"	4'-0"	1'-5"	4'-6"	0.44
36"	4'-6"	1'-7"	5'-0"	0.53
42"	5'-0"	1'-9"	5'-6"	0.64
48"	5'-6"	1'-11"	6'-0"	0.76
54"	6'-0"	2'-3"	6'-6"	0.88
60"	6'-6"	2'-5"	7'-0"	0.96

NO. 8 BAR TO BE PLACED WHEN DIRECTED



FRONT ELEVATION

TYPICAL STD. "B"

DEPARTMENT OF PUBLIC WORKS  
**HEADWALL FOR DRAIN PIPES**  
 MEMPHIS, TENN.  
 SURVEY BY \_\_\_\_\_ DATE \_\_\_\_\_ BOOK \_\_\_\_\_ P. \_\_\_\_\_  
 DRAFTSMAN *RUTH* DATE *5-6-58* SCALE *NONE*  
 APPROVED *G.E. Mason* OFFICE ENGINEER  
 APPROVED *J.M. [Signature]* CITY ENGINEER

REVISED 8-24-77 O.S.

NO.	DATE	BY	REMARKS
1	5-30-85	L.R.H.	REMOVED DIV. OF PUBLIC WORKS (T. BLK.)
2	7-21-87	D.H.G.	ADD: NO. 8 ; CLASS 'A'
3	2-24-88	D.H.G.	REMOVED DEPARTMENT (T. BLK.)

ENGLISH	METRIC

CITY OF MEMPHIS  
 DIVISION OF ENGINEERING

**DESIGN STANDARD FOR TYPE "B" HEADWALL**

\_\_\_\_\_  
 CITY ENGINEER

\_\_\_\_\_  
 DATE

JC5756