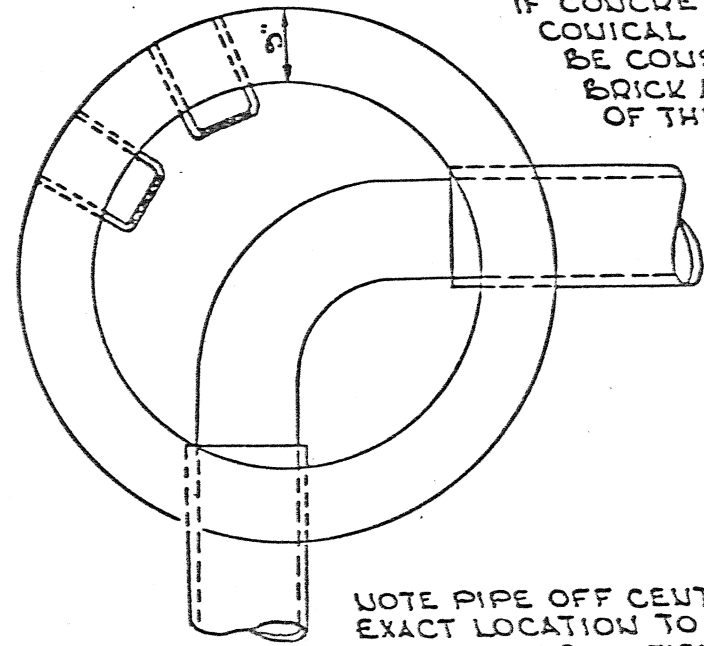


BUREAU, BUREAU ENGINEER, DRAFTSMAN, DATE, SCALE

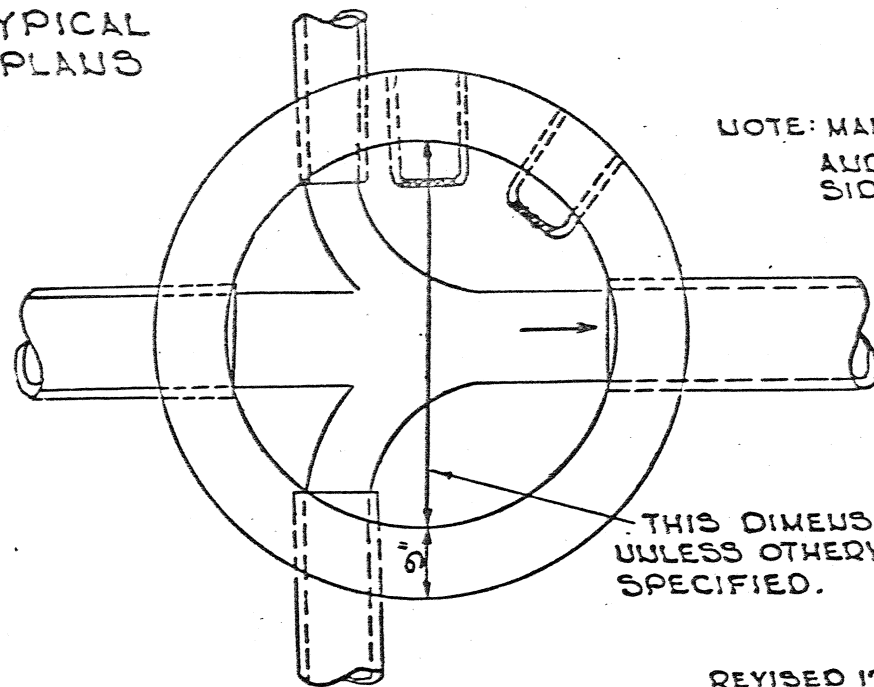
REVISIONS

NO.	DATE	BY	REMARKS
1	5-7-85	L.R.H.	REMOVED DIV. OF PUBLIC WORKS (T. BLK.)
2	3-3-88	D.H.G.	REMOVED DEPARTMENT (T. BLK.)

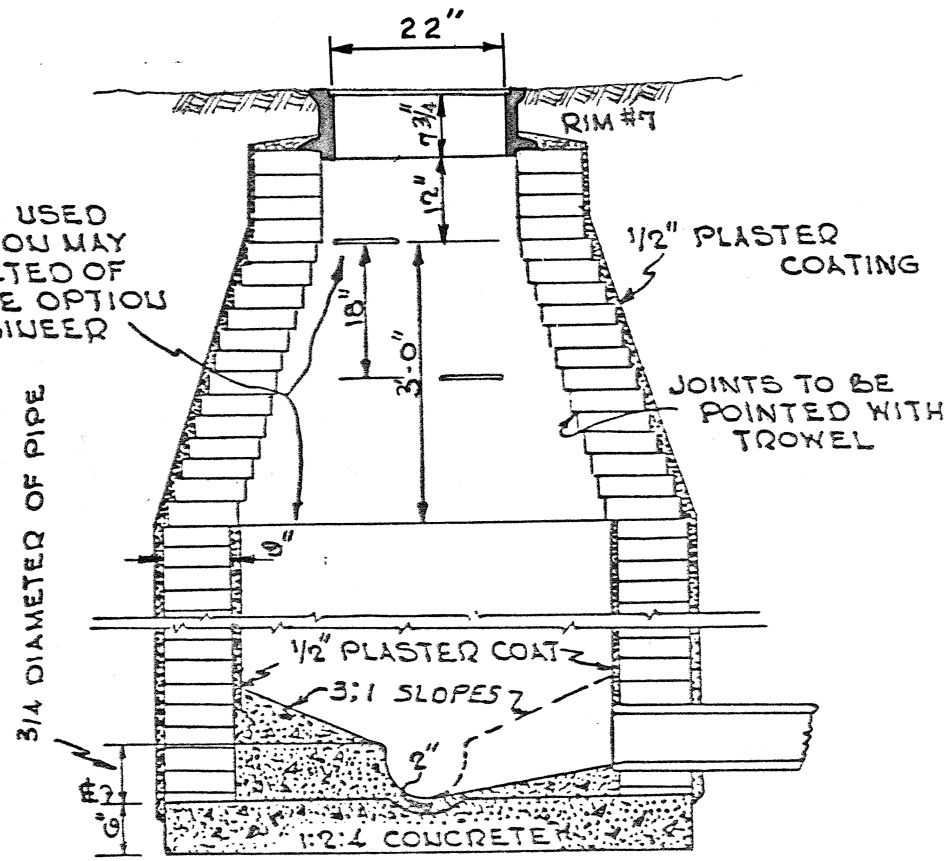


NOTE PIPE OFF CENTER EXACT LOCATION TO BE DETERMINED IN FIELD

TYPICAL PLANS



REVISED 12-10-57
REVISED 5-5-59



SECTION

NOTE: MANHOLE STEPS TO BEGIN 18" ABOVE THE BEUCH, AND 1 ADDITIONAL STEP TO BE PLACED ON THE SIDE OPPOSITE THE LADDER NEAR THE TOP

STANDARD MANHOLE
UNDER 12 FT. DEEP

MEMPHIS, TENN.

SURVEY BY _____ DATE _____ BOOK _____
DRAFTSMAN O.L.A. DATE 12-10-57 SCALE 1/2"=1'
APPROVED *G. E. Maxon*
APPROVED *M. B. ...* CITY ENGINEER

CITY OF MEMPHIS
DIVISION OF ENGINEERING

DESIGN STANDARD
FOR
DRAIN MANHOLE (BRICK)

CITY ENGINEER

DATE