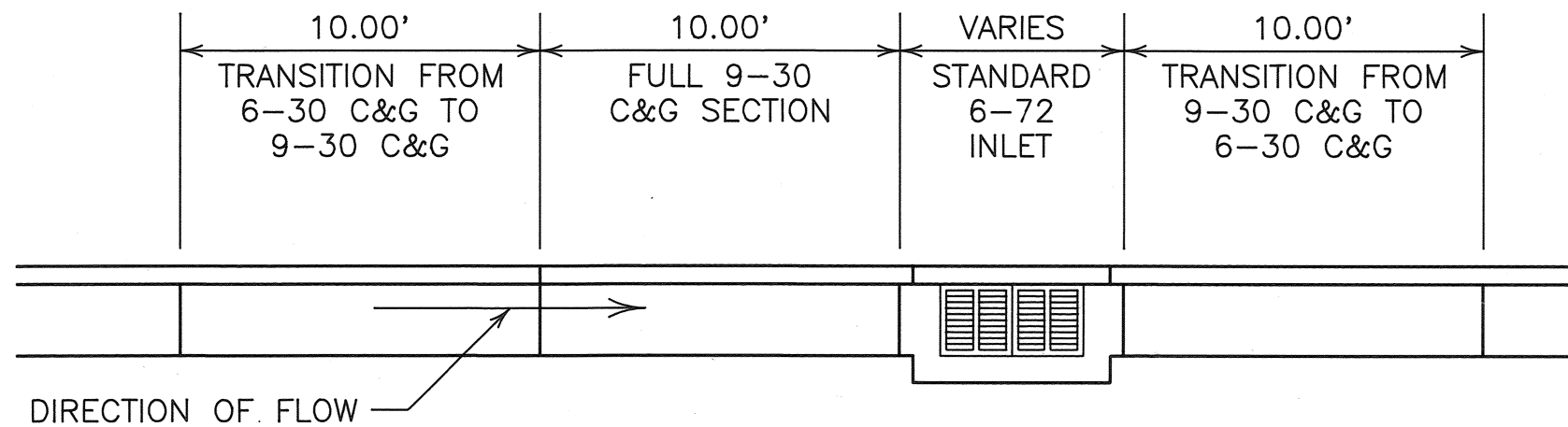


9-30 CURB AND GUTTER



REVISIONS			
NO.	DATE	BY	REMARKS

**NOTES:**

1. Pre-cut exp. joint material shall be used in all exp. joints.
2. Exp. joint material shall be installed at ends of transition sections.
3. Exp. joint material shall be installed at a minimum of 5 ft. from inlet structures.
4. Conc. to be Class 'A' (6 bag min).

CITY OF MEMPHIS DIVISION OF ENGINEERING	
DESIGN STANDARD FOR 9-30 CURB AND TRANSITION	
<i>John J. Collins, P.E.</i> DEPUTY CITY ENGINEER	7-30-90 DATE
<i>Bryant Bondurant, P.E.</i> CITY ENGINEER	7-31-90 DATE