



Cherry Bayou Drainage Master Plan

Neighborhood Meeting – March 29, 2018

ALLWORLD
Project Management, LLC



Meeting Agenda

- Welcome / Sign-in
- Introduction to Project Team
- City Program Overview
- Project Scope and Purpose
- Schedule
- Requested Feedback
- Questions and Answers

Background on the City of Memphis Stormwater Master Planning Program

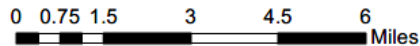
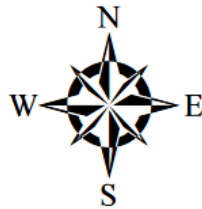
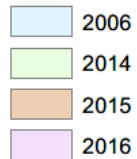


Lick Creek Area - 2012

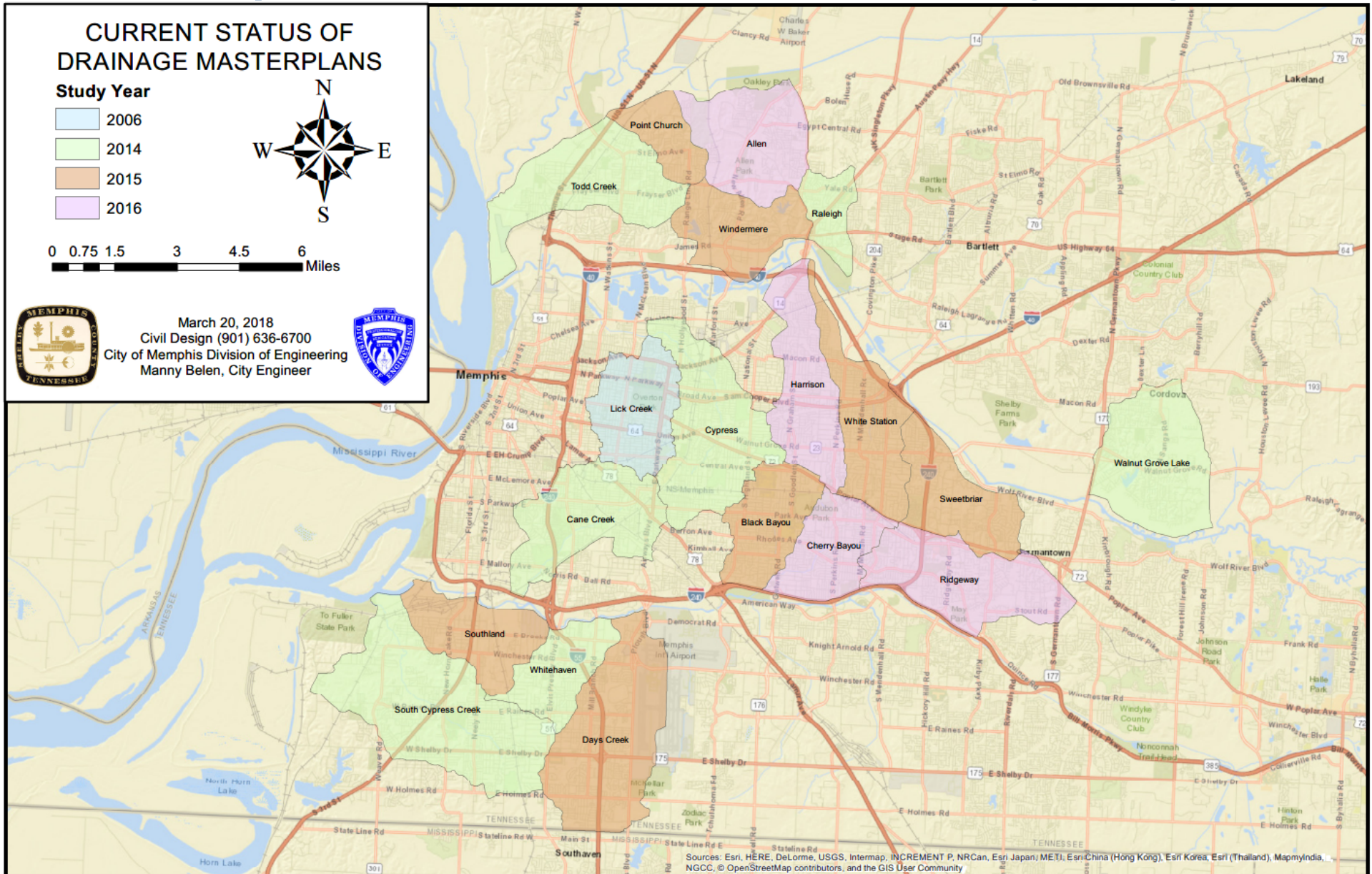
City Stormwater Master Planning Program

CURRENT STATUS OF DRAINAGE MASTERPLANS

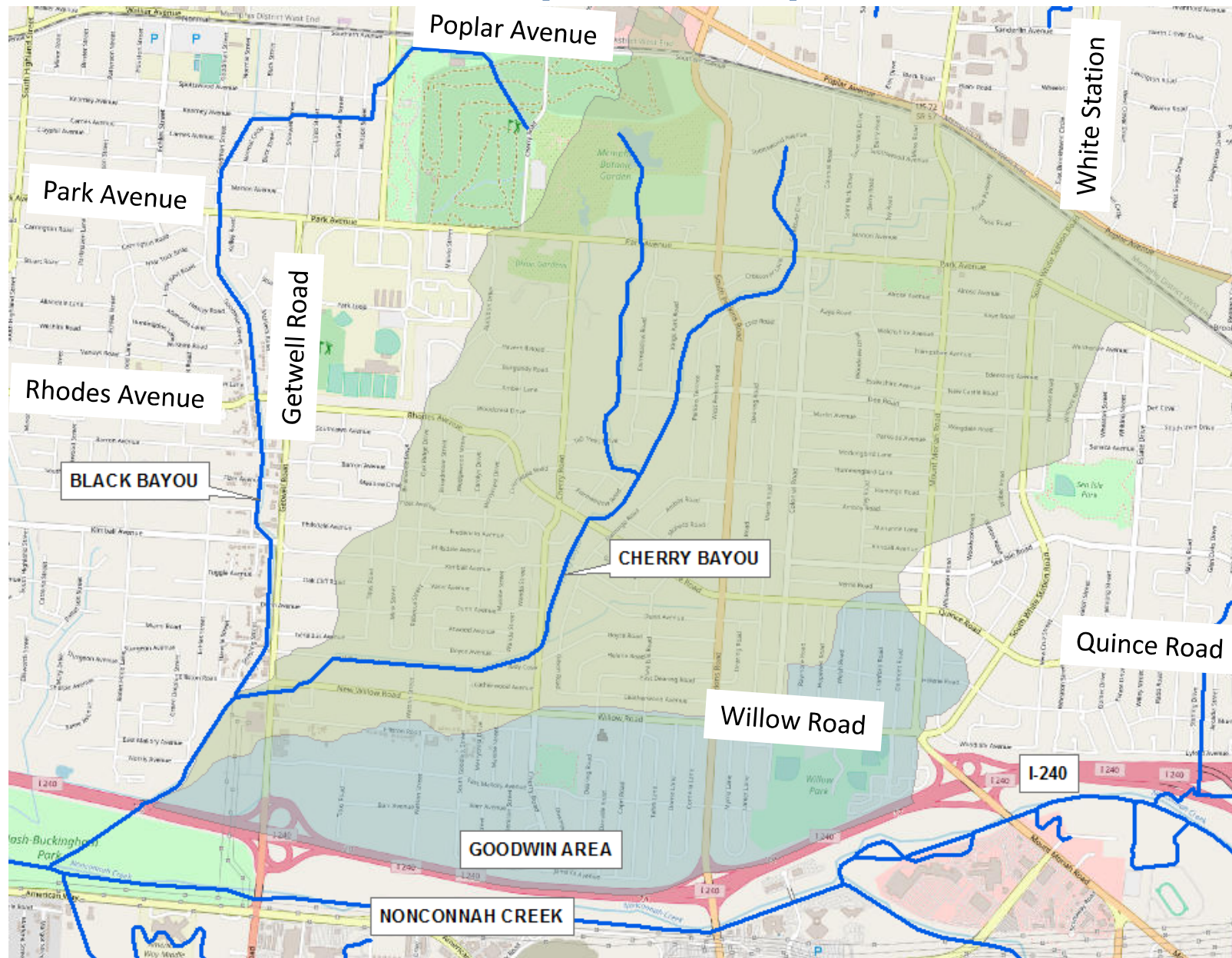
Study Year



March 20, 2018
Civil Design (901) 636-6700
City of Memphis Division of Engineering
Manny Belen, City Engineer



Cherry Bayou Study Area



Project Scope of Work

- Public engagement
- Survey
- Rain and Stream Data Collection
- GIS mapping
- Assessment of existing drainage system
- Recommended improvements
- Summary report



Public Participation

- Two public neighborhood meetings
 - One initial meeting to introduce the project and gather information on flooding locations
 - One meeting near the end of the project to review the outcomes and next steps



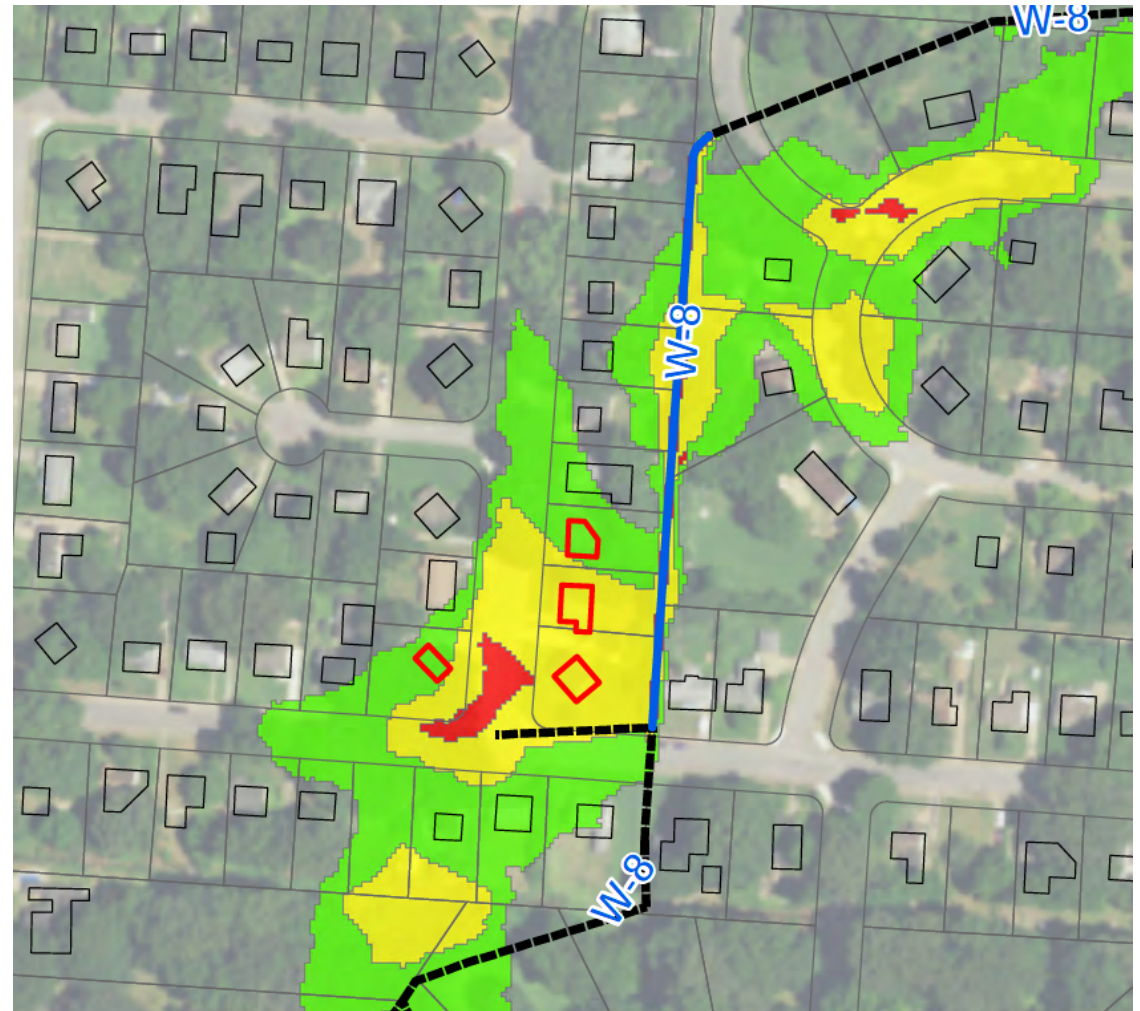
Inventory Existing Drainage System

- Field survey
- Photographs
- GIS mapping
- Record drawings
- Public input on flooding locations



Alternatives Development

- Cost effective means to reduce flooding
- Potential improvements
 - Upsize storm sewer and culverts
 - Detention/retention ponds
 - Green infrastructure



New Culvert Crossing

