



- Legend:**
- City of Memphis Flooding Reports
 - ▭ City of Memphis Parcels
 - Junction**
 - Existing
 - Improved
 - Inactive
 - Conduit**
 - Existing
 - Improved
 - Inactive
 - Weir**
 - Active
 - Additional Recommendations Outside of Modeling Scope

Replace 60 LF 24" RCP with 60 LF (36" RCP Eq.) 45" x 29" HERCP

Replace 25 LF (each) assumed 15" RCP with 25 LF (each) (24" RCP Eq.) 30" x 19" HERCP

Drainage Basin: Rochester



▲ NORTH 1 inch = 75 feet

IA2B Improvements

Exhibit 11	15640750	June 2023
	Project No.	Date

Source: Esri, Maxar, Earthstar Geographics, and the GIS User Community



- Legend:**
- City of Memphis Flooding Reports
 - ▭ City of Memphis Parcels
- Junction**
- Active
 - Inactive
- Conduit**
- Active
 - Inactive
- Weir**
- Active
- Improved 10-Year Storm Inundation Depth (feet)**
- 0.01 - 0.5
 - 0.51 - 1
 - 1.01 - 2
 - 2.01 - 3
 - 3.01 - 4
- Existing 10-Year Storm Inundation Depth (feet)**
- 0.01 - 0.5
 - 0.51 - 1
 - 1.01 - 2
 - 2.01 - 3
 - 3.01 - 4

Drainage Basin: Rochester

Source: Esri, Maxar, Earthstar Geographics, and the GIS User Community



▲ NORTH		1 inch = 75 feet
IA2B 10-Year Existing vs. Improved		
Exhibit 12	15640750	June 2023
	Project No.	Date



- Legend:**
- City of Memphis Flooding Reports
 - ▭ City of Memphis Parcels
- Junction**
- Existing
 - Improved
 - Inactive
- Conduit**
- Existing
 - Improved
 - Inactive
- Additional Recommendations Outside of Modeling Scope

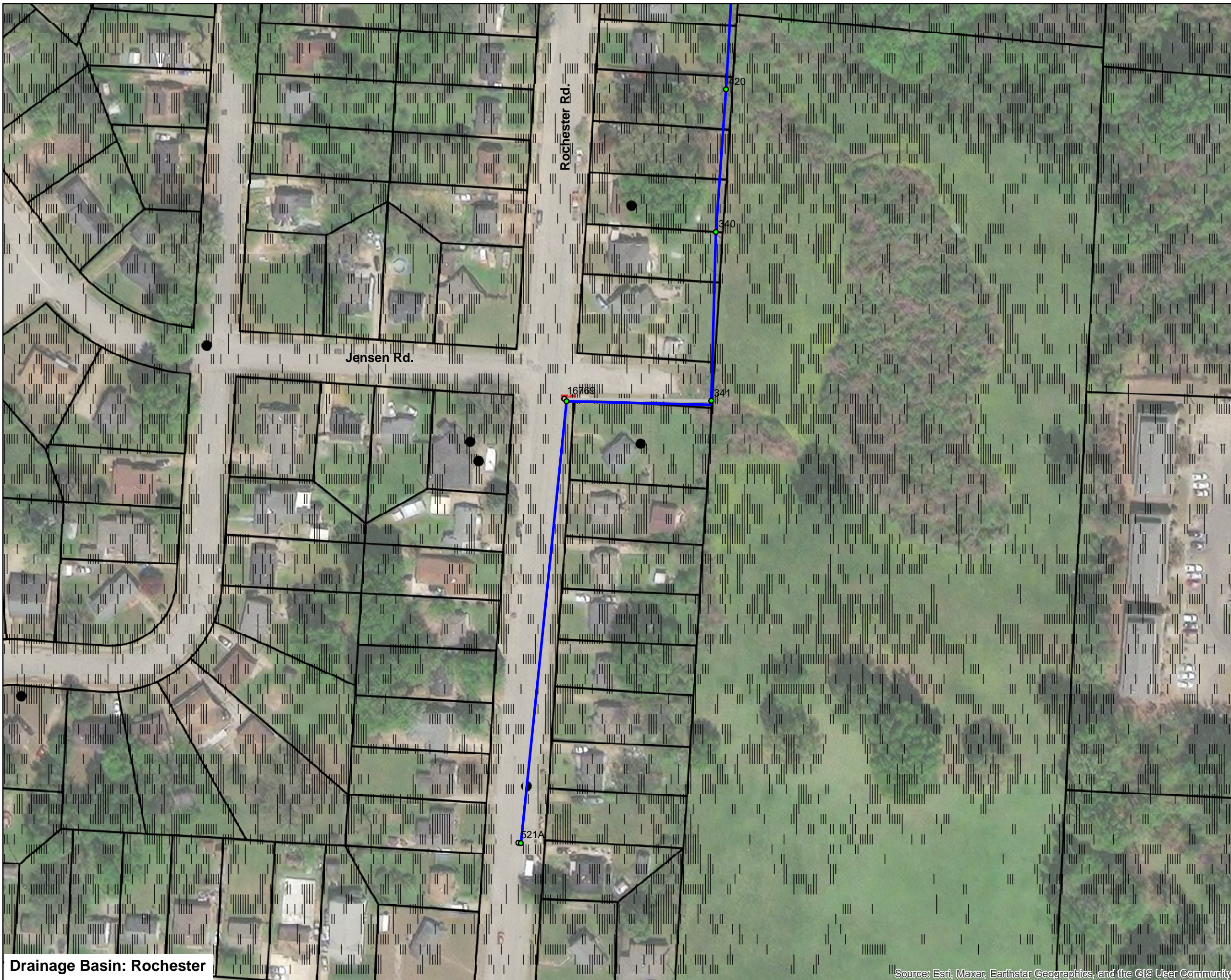
City of Memphis Parcel IDs:
1. - 075057 00066

Drainage Basin: Rochester

Source: Esri, Maxar, Earthstar Geographics, and the GIS User Community



▲ NORTH		1 inch = 100 feet
IA3 Improvements		
Exhibit 13	15640750 Project No.	June 2023 Date



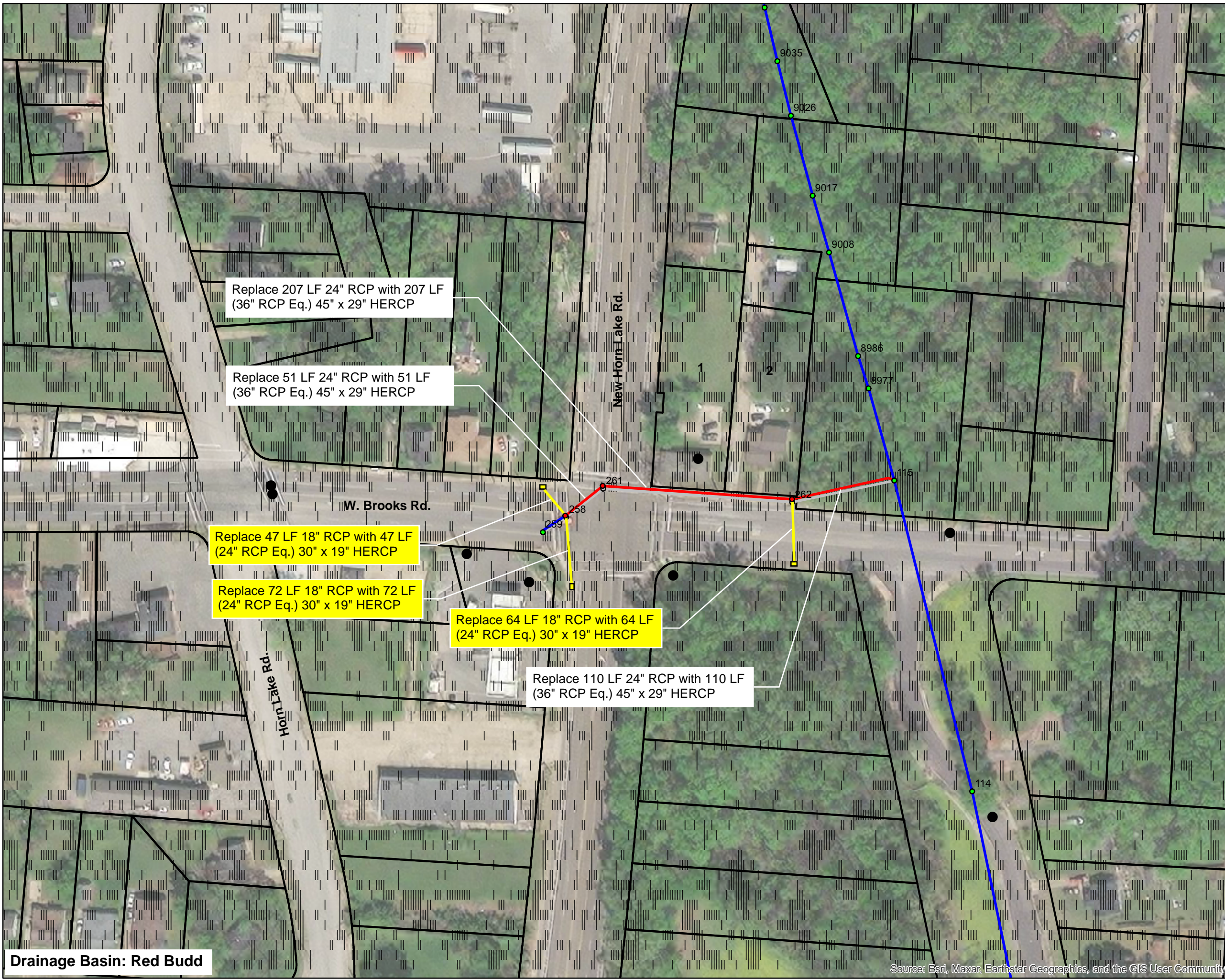
- Legend:**
- City of Memphis Flooding Reports
 - ▭ City of Memphis Parcels
- Junction**
- Active
 - Inactive
- Conduit**
- Active
 - Inactive
- Existing 10-Year Storm Inundation Depth (feet)**
- 0.01 - 0.5

Drainage Basin: Rochester

Source: Esri, Maxar, Earthstar Geographics, and the GIS User Community



▲ NORTH		1 inch = 100 feet
IA3 10-Year Existing vs. Improved		
Exhibit 14	15640750 Project No.	June 2023 Date



- Legend:**
- City of Memphis Flooding Reports
 - ▭ City of Memphis Parcels
- Junction**
- Existing
 - Improved
 - Inactive
- Conduit**
- Existing
 - Improved
 - Inactive
- Additional Recommendations Outside of Modeling Scope

- City of Memphis Parcel IDs:**
1. - 075007 00025C
 2. - 075007 00049



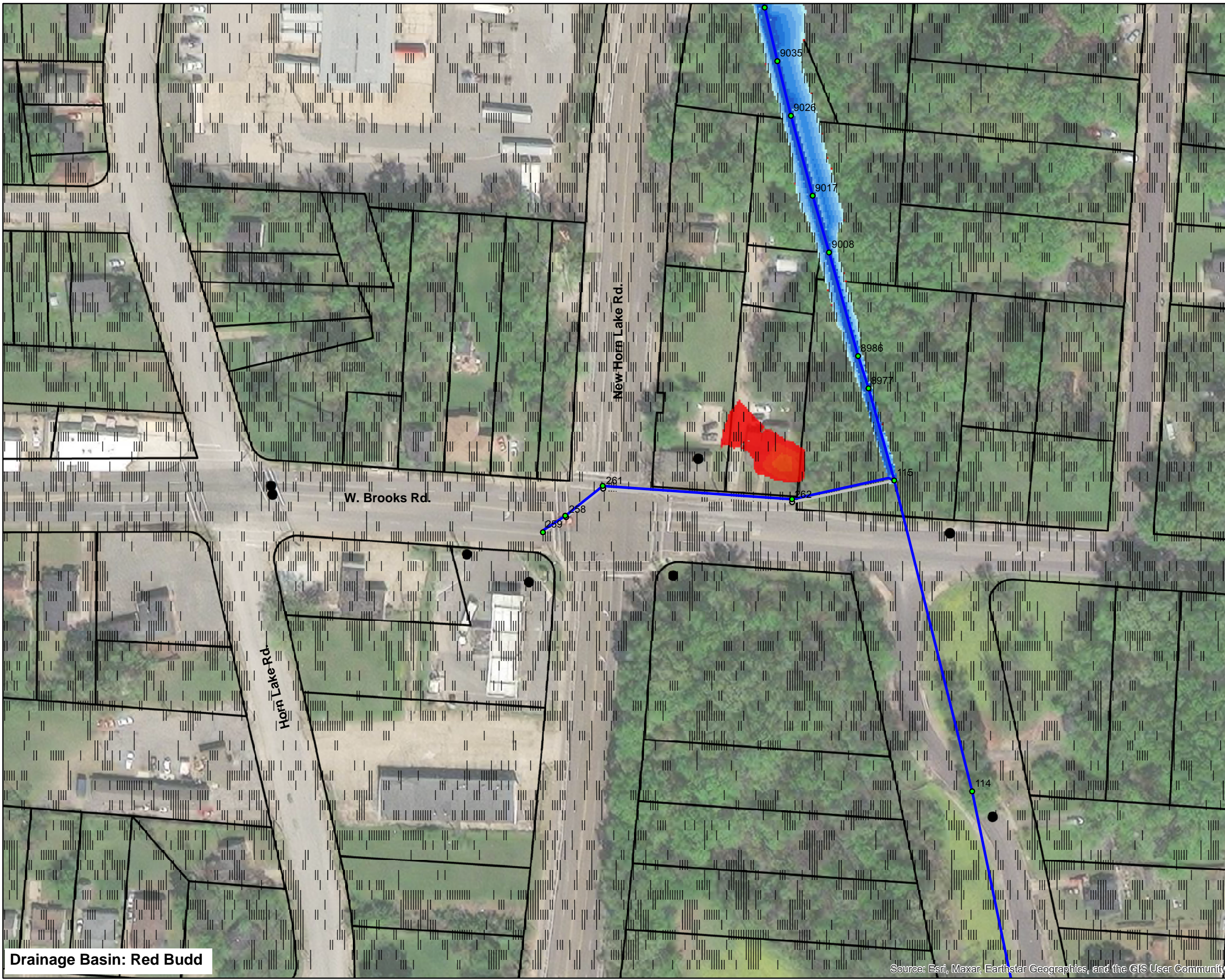
▲ NORTH 1 inch = 100 feet

IA4 Improvements

Exhibit 15	15640750	June 2023
	Project No.	Date

Drainage Basin: Red Budd

Source: Esri, Maxar, Earthstar Geographics, and the GIS User Community



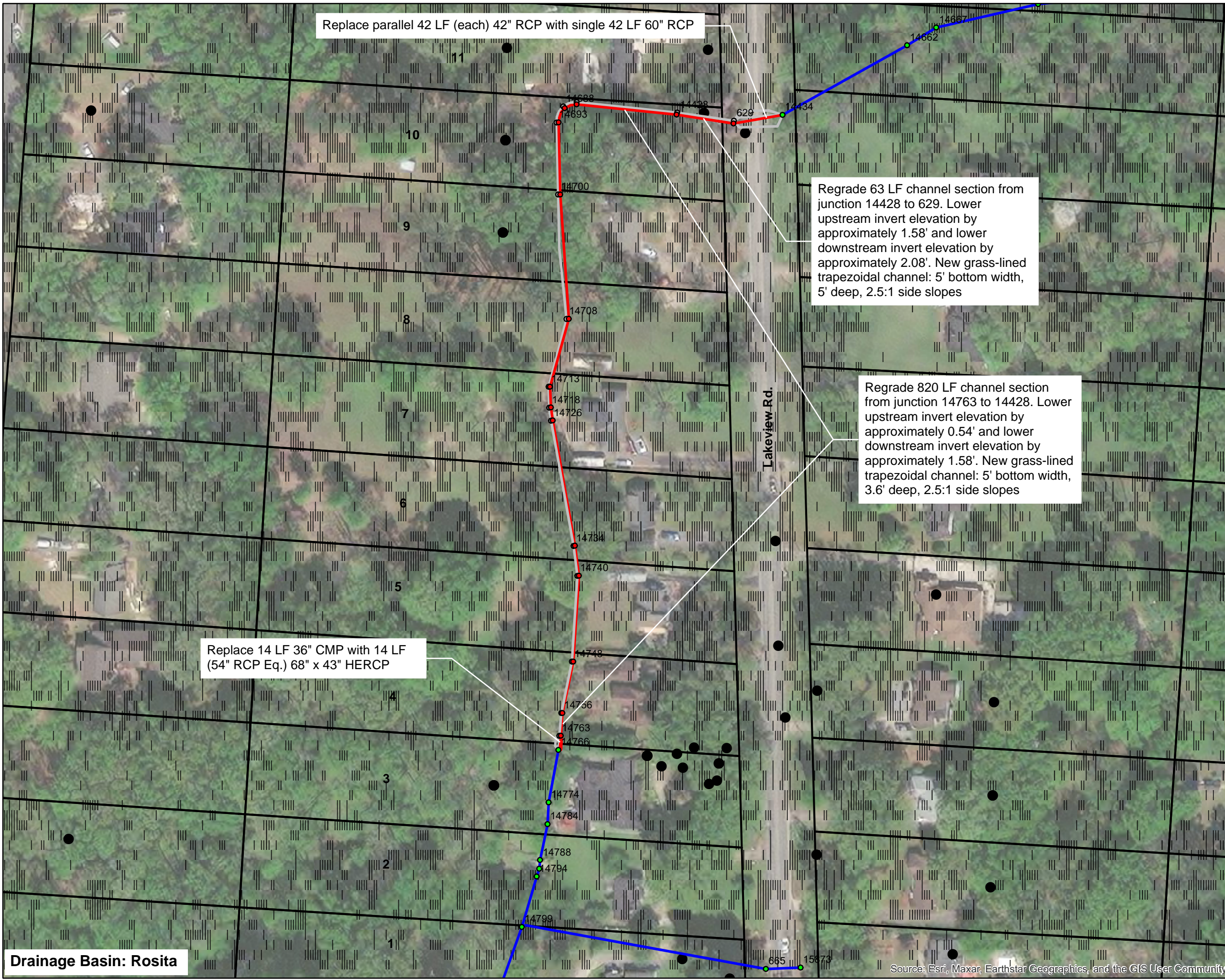
- Legend:**
- City of Memphis Flooding Reports
 - ▭ City of Memphis Parcels
- Junction**
- Active
 - Inactive
- Conduit**
- Active
 - Inactive
- Improved 10-Year Storm Inundation**
- Depth (feet)**
- 0.01 - 0.5
 - 0.51 - 1
 - 1.01 - 2
 - 2.01 - 3
 - 3.01 - 4
 - 4.01 - 5
 - 5.01 - 10
- Existing 10-Year Storm Inundation**
- Depth (feet)**
- 0.01 - 0.5
 - 0.51 - 1
 - 1.01 - 2
 - 2.01 - 3
 - 3.01 - 4
 - 4.01 - 5
 - 5.01 - 10

Drainage Basin: Red Budd

Source: Esri, Maxar, Earthstar Geographics, and the GIS User Community



▲ NORTH		1 inch = 100 feet
IA4 10-Year Existing vs. Improved		
Exhibit 16	15640750 Project No.	June 2023 Date



Replace parallel 42 LF (each) 42" RCP with single 42 LF 60" RCP

Regrade 63 LF channel section from junction 14428 to 629. Lower upstream invert elevation by approximately 1.58' and lower downstream invert elevation by approximately 2.08'. New grass-lined trapezoidal channel: 5' bottom width, 5' deep, 2.5:1 side slopes

Regrade 820 LF channel section from junction 14763 to 14428. Lower upstream invert elevation by approximately 0.54' and lower downstream invert elevation by approximately 1.58'. New grass-lined trapezoidal channel: 5' bottom width, 3.6' deep, 2.5:1 side slopes

Replace 14 LF 36" CMP with 14 LF (54" RCP Eq.) 68" x 43" HERCP

Legend:

- City of Memphis Flooding Reports
- ▭ City of Memphis Parcels
- Junction**
- Existing
- Improved
- Inactive
- Conduit**
- Existing
- Improved
- Inactive
- Weir**
- Domain
- Inactive

City of Memphis Parcel IDs:

1. - 077005 00052
2. - 077005 00022
3. - 077005 00021
4. - 077005 00020
5. - 077005 00019
6. - 077005 00018
7. - 077005 00017
8. - 077005 00016
9. - 077005 00015
10. - 077005 00014
11. - 077005 00013



▲ NORTH 1 inch = 100 feet

IA8A Improvements

Exhibit 17	15640750	June 2023
	Project No.	Date



- Legend:**
- City of Memphis Flooding Reports
 - ▭ City of Memphis Parcels
 - Junction**
 - Active
 - Inactive
 - Conduit**
 - Active
 - Inactive
 - Weir**
 - Active
 - Inactive
 - Improved 10-Year Storm Inundation Depth (feet)**
 - 0.01 - 0.5
 - 0.51 - 1
 - 1.01 - 2
 - 2.01 - 3
 - Existing 10-Year Storm Inundation Depth (feet)**
 - 0.01 - 0.5
 - 0.51 - 1
 - 1.01 - 2
 - 2.01 - 3
 - 3.01 - 4

Drainage Basin: Rosita



▲ NORTH		1 inch = 100 feet
IA8A 10-Year Existing vs. Improved		
Exhibit 18	15640750 Project No.	June 2023 Date

Source: Esri, Maxar, Earthstar Geographics, and the GIS User Community