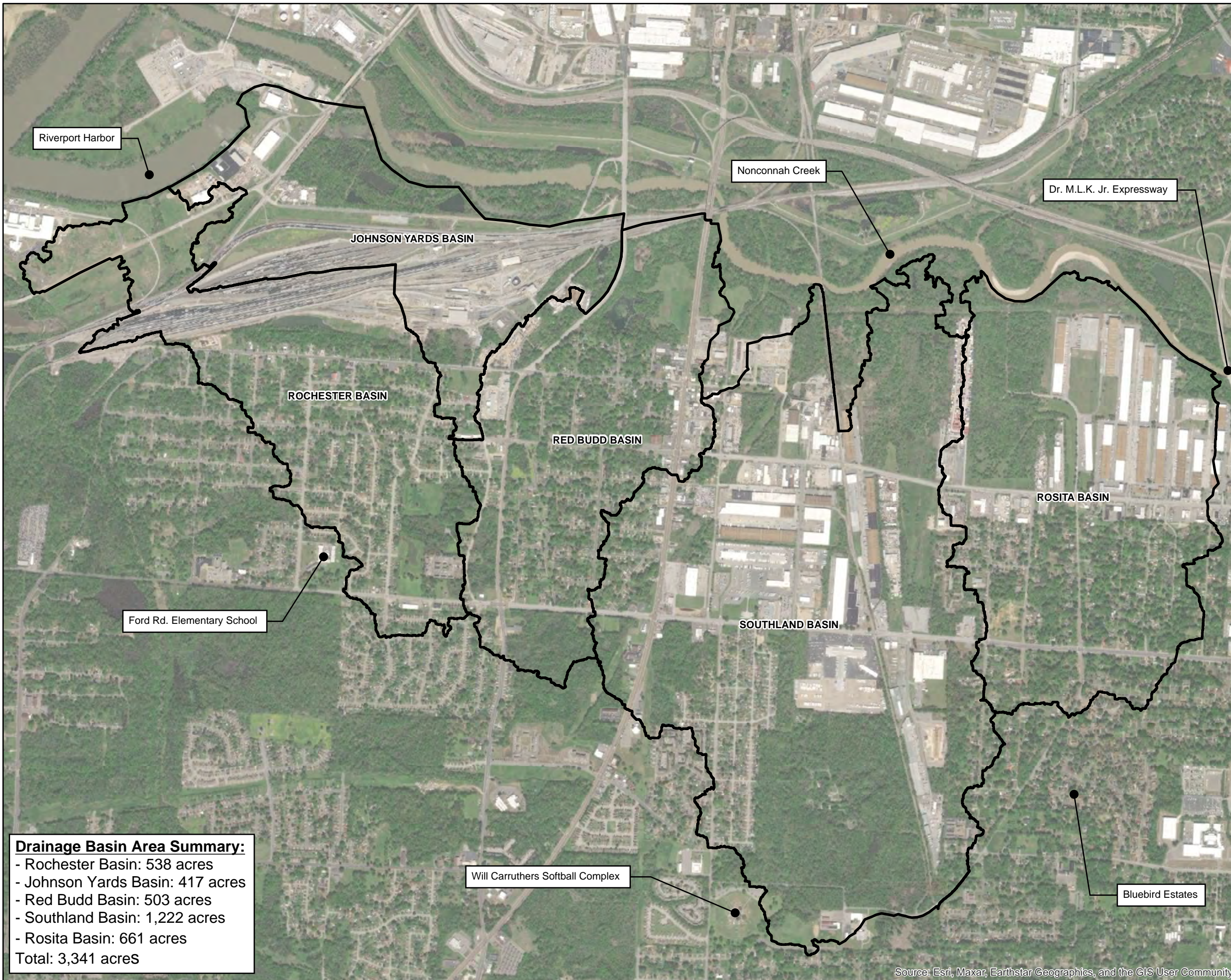

APPENDIX A
MAP EXHIBITS



Legend:

▭ Drainage Basin Boundary

Drainage Basin Area Summary:

- Rochester Basin: 538 acres
- Johnson Yards Basin: 417 acres
- Red Budd Basin: 503 acres
- Southland Basin: 1,222 acres
- Rosita Basin: 661 acres

Total: 3,341 acres



N 1 inch = 1,600 feet

All Study Area Basins

Exhibit 1	15640750	June 2023
	Project No.	Date

Source: Esri, Maxar, Earthstar Geographics, and the GIS User Community

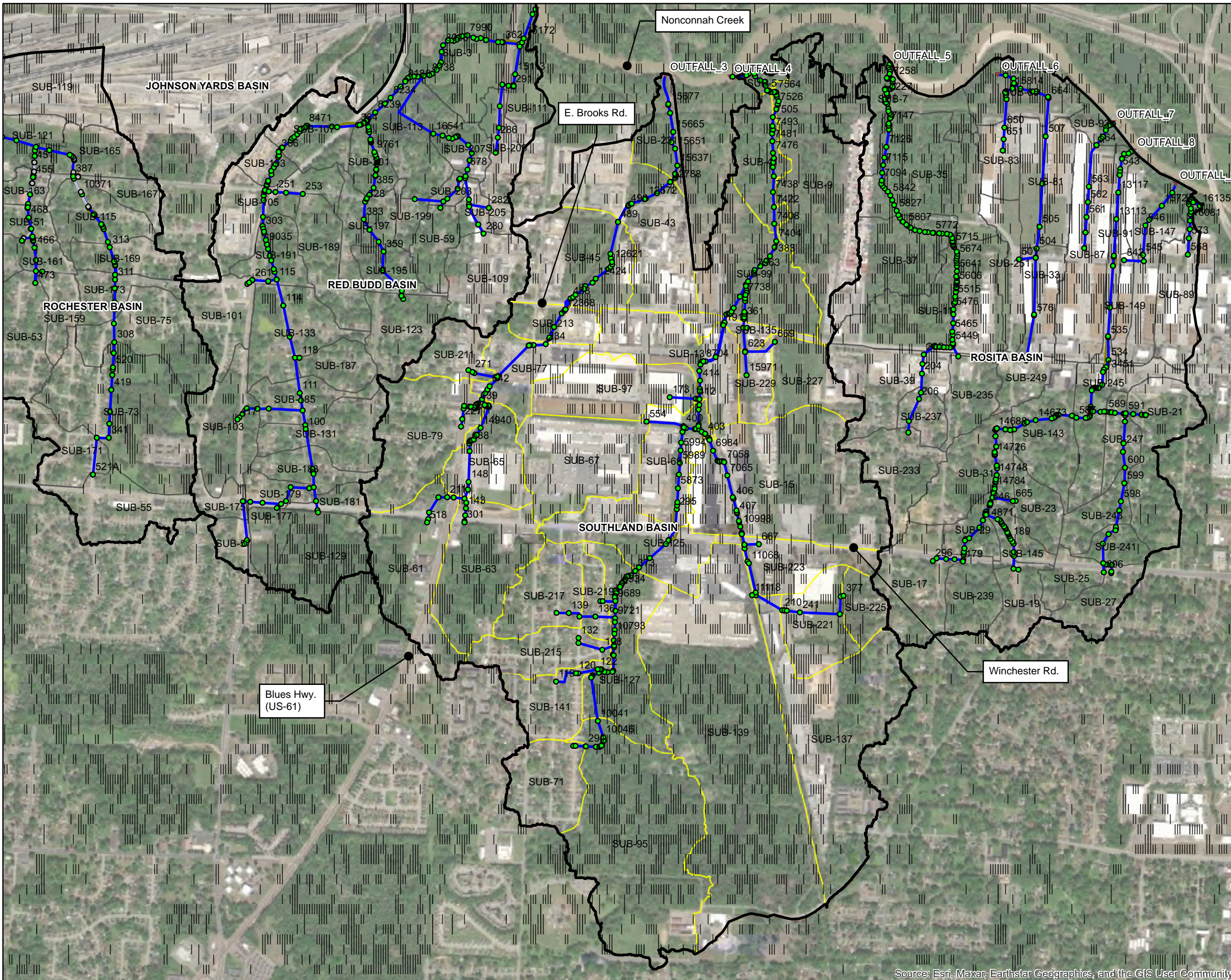


- Legend:**
- ▭ Drainage Basin Boundary
 - Junction**
 - Active
 - Inactive
 - Outfall**
 - ▼ Active
 - Inactive
 - Conduit**
 - Active
 - Inactive
 - Weir**
 - Active
 - Subcatchments**
 - ▭ Other Subcatchments
 - ▭ Red Budd Subcatchments



▲ NORTH		1 inch = 800 feet	
Red Budd Basin Model			
Exhibit 3	15640750	June 2023	
	Project No.	Date	

Source: Esri, Maxar, Earthstar Geographics, and the GIS User Community



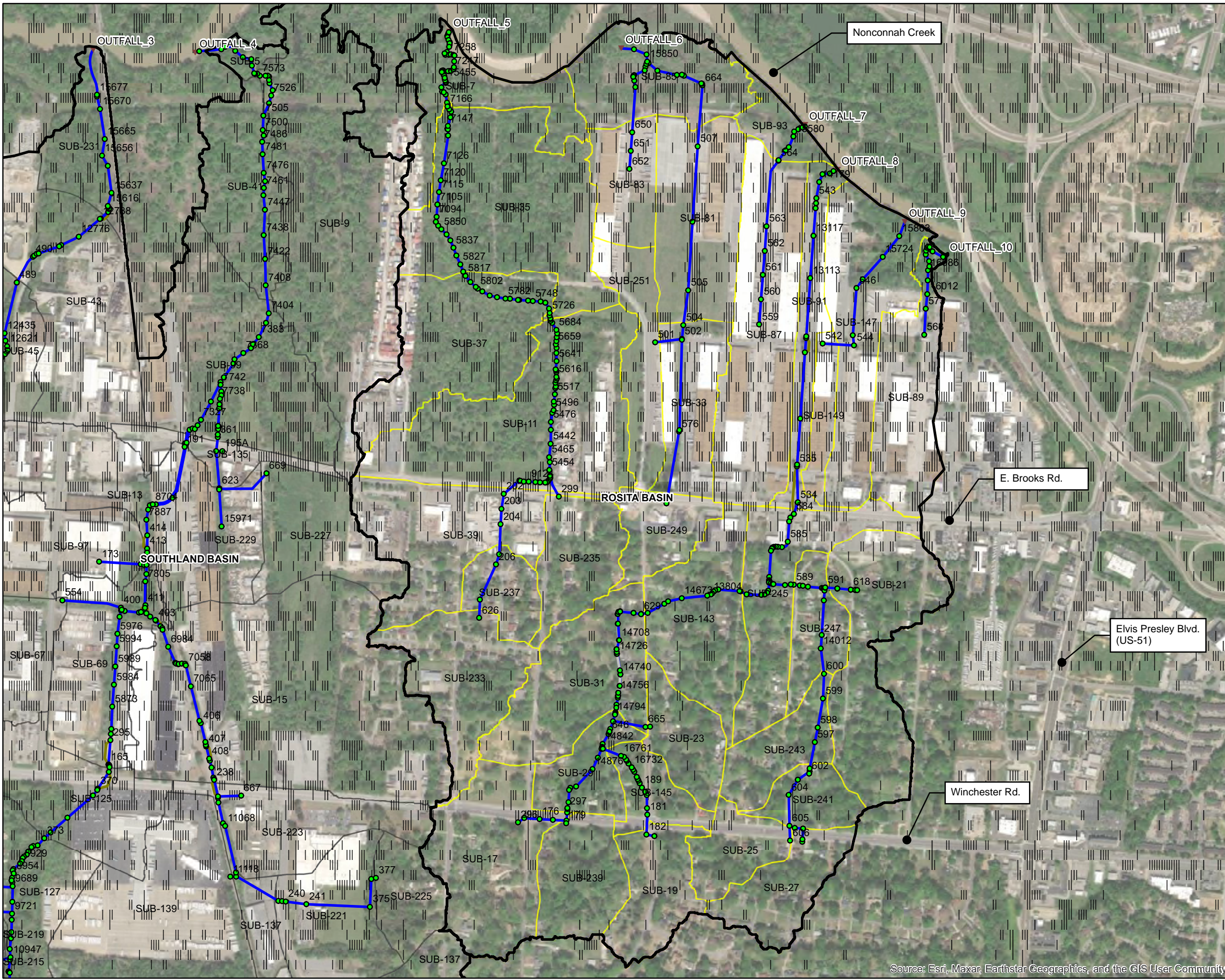
- Legend:**
- ▭ Drainage Basin Boundary
 - Junction**
 - Active
 - Inactive
 - Outfall**
 - ▼ Active
 - Conduit**
 - Active
 - Inactive
 - Weir**
 - Active
 - Inactive
 - Subcatchments**
 - ▭ Other Subcatchments
 - ▭ Southland Subcatchments



▲ NORTH 1 inch = 1,200 feet
 Southland Basin Model

Exhibit 4	15640750	June 2023
	Project No.	Date

Source: Esri, Maxar, Earthstar Geographics, and the GIS User Community

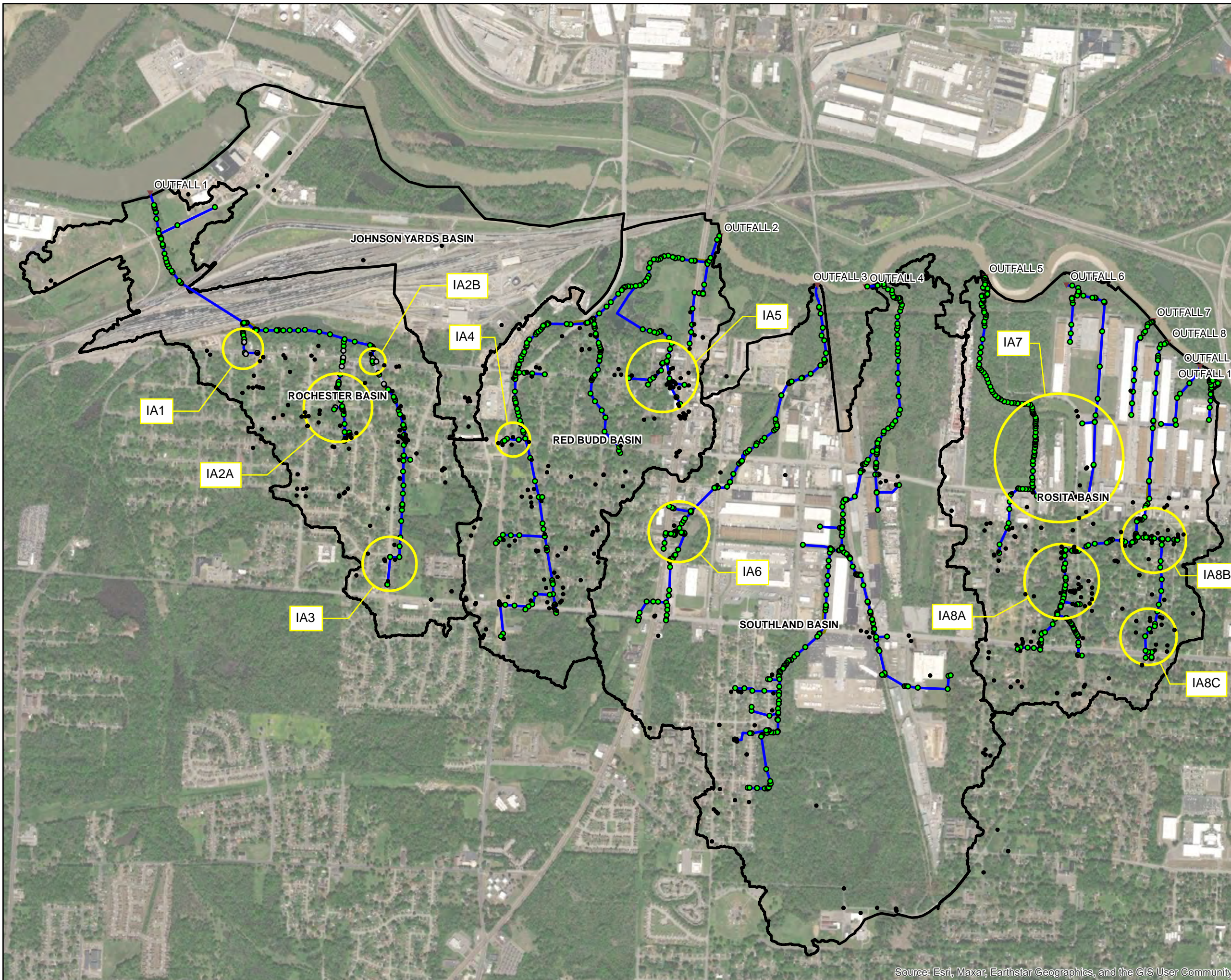


- Legend:**
- Drainage Basin Boundary
 - Junction**
 - Active
 - Inactive
 - Outfall**
 - ▼ Active
 - Conduit**
 - Active
 - Inactive
 - Weir**
 - Active
 - Inactive
 - Subcatchments**
 - Other Subcatchments
 - Rosita Subcatchments



	NORTH	1 inch = 750 feet	
Rosita Basin Model			
Exhibit 5	15640750	June 2023	
	Project No.	Date	

Source: Esri, Maxar, Earthstar Geographics, and the GIS User Community



- Legend:**
- City of Memphis Flooding Reports
 - ▭ Improvement Areas
 - ▭ Drainage Basin Boundary
- Junction**
- Active
 - Inactive
- Outfall**
- ▼ Active
- Conduit**
- Active
 - Inactive
- Weir**
- Active
 - Inactive



▲ NORTH 1 inch = 1,600 feet

Flooding Reports and Improvements

Exhibit 6	15640750 Project No.	June 2023 Date
-----------	-------------------------	-------------------

Source: Esri, Maxar, Earthstar Geographics, and the GIS User Community



- Legend:**
- City of Memphis Flooding Reports
 - City of Memphis Parcels
- Junction**
- Existing
 - Improved
 - Inactive
- Conduit**
- Existing
 - Improved
 - Inactive
- Weir**
- Active
 - Additional Recommendations Outside of Modeling Scope

- City of Memphis Parcel IDs:**
1. - 075001 00067C
 2. - 075001 00065
 3. - 075001 00064
 4. - 075001 00063
 5. - 075001 00087

Drainage Basin: Rochester

Source: Esri, Maxar, Earthstar Geographics, and the GIS User Community



▲ NORTH	1 inch = 75 feet	
IA1 Improvements		
Exhibit 7	15640750 Project No.	June 2023 Date



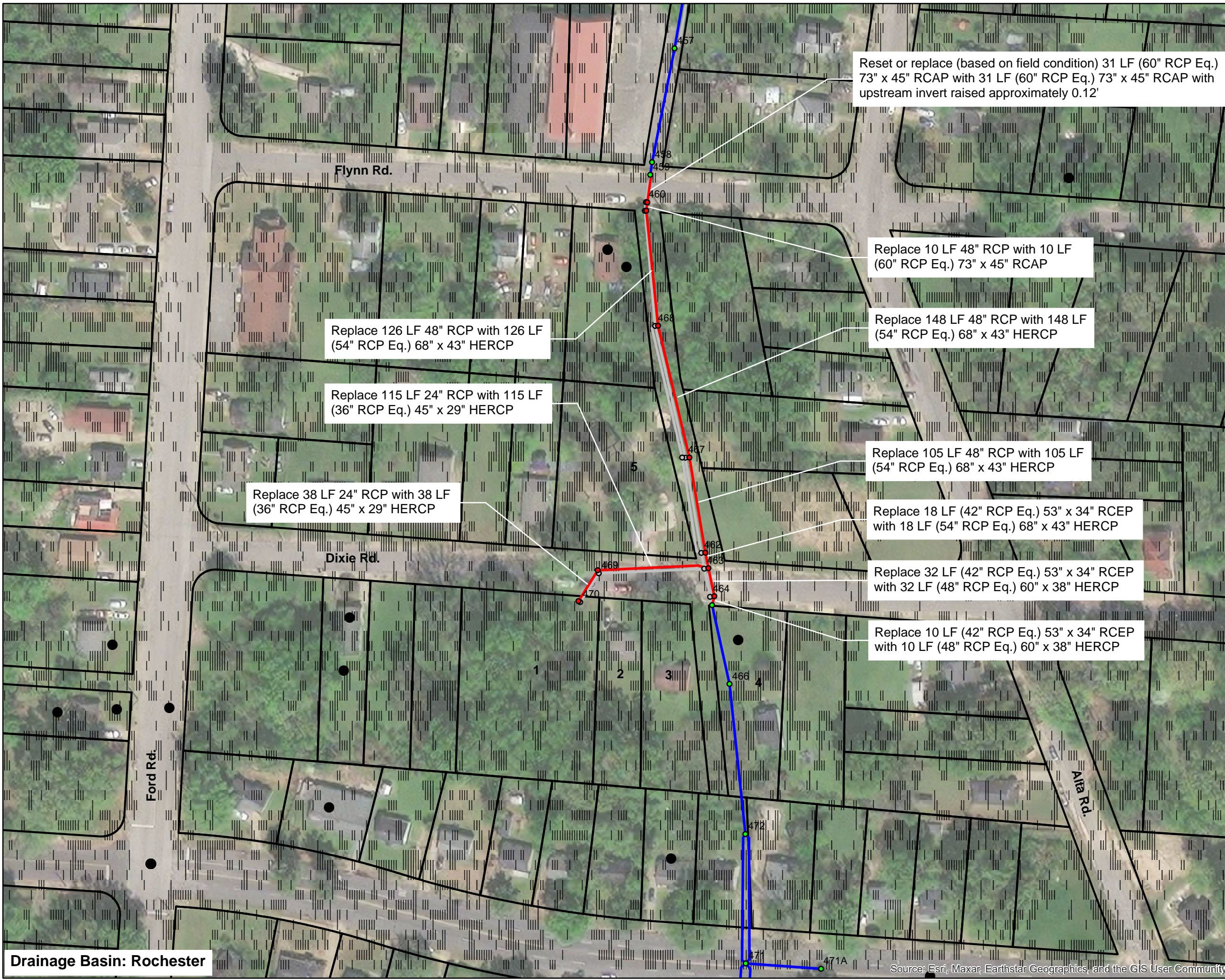
- Legend:**
- City of Memphis Flooding Reports
 - City of Memphis Parcels
- Junction**
- Active
 - Inactive
- Conduit**
- Active
 - Inactive
- Weir**
- Active
- Improved 10-Year Storm Inundation Depth (feet)**
- 0.01 - 0.5
 - 0.51 - 1
 - 1.01 - 2
 - 2.01 - 3
 - 3.01 - 4
- Existing 10-Year Storm Inundation Depth (feet)**
- 0.01 - 0.5
 - 0.51 - 1
 - 1.01 - 2
 - 2.01 - 3
 - 3.01 - 4

Drainage Basin: Rochester

Source: Esri, Maxar, GeoEye, Earthstar Geographics, CNES/Airbus DS, USDA, USGS, AeroGRID, IGN, and the GIS User Community, Esri, HERE, Garmin, (c) OpenStreetMap contributors, and the GIS user community



▲ NORTH		1 inch = 75 feet
IA1 10-Year Existing vs. Improved		
Exhibit 8	15640750 Project No.	June 2023 Date



- Legend:**
- City of Memphis Flooding Reports
 - ▭ City of Memphis Parcels
- Junction**
- Existing
 - Improved
 - Inactive
- Conduit**
- Existing
 - Improved
 - Inactive

- City of Memphis Parcel IDs:**
1. - 075016 00006
 2. - 075016 00007
 3. - 075016 00008
 4. - 075016 00009
 5. - 075015 00013

Drainage Basin: Rochester

Source: Esri, Maxar, Earthstar Geographics, and the GIS User Community



▲ NORTH		1 inch = 100 feet
IA2A Improvements		
Exhibit 9	15640750 Project No.	June 2023 Date



- Legend:**
- City of Memphis Flooding Reports
 - ▭ City of Memphis Parcels
- Junction**
- Active
 - Inactive
- Conduit**
- Active
 - Inactive
- Existing 10-Year Storm Inundation Depth (feet)**
- 0.01 - 0.5
 - 0.51 - 1

Drainage Basin: Rochester

Esri, HERE, Garmin, (c) OpenStreetMap contributors, and the GIS user community. Source: Esri, Maxar, Earthstar Geographics, and the GIS User Community



▲ NORTH		1 inch = 100 feet
IA2A 10-Year Existing vs. Improved		
Exhibit 10	15640750 Project No.	June 2023 Date