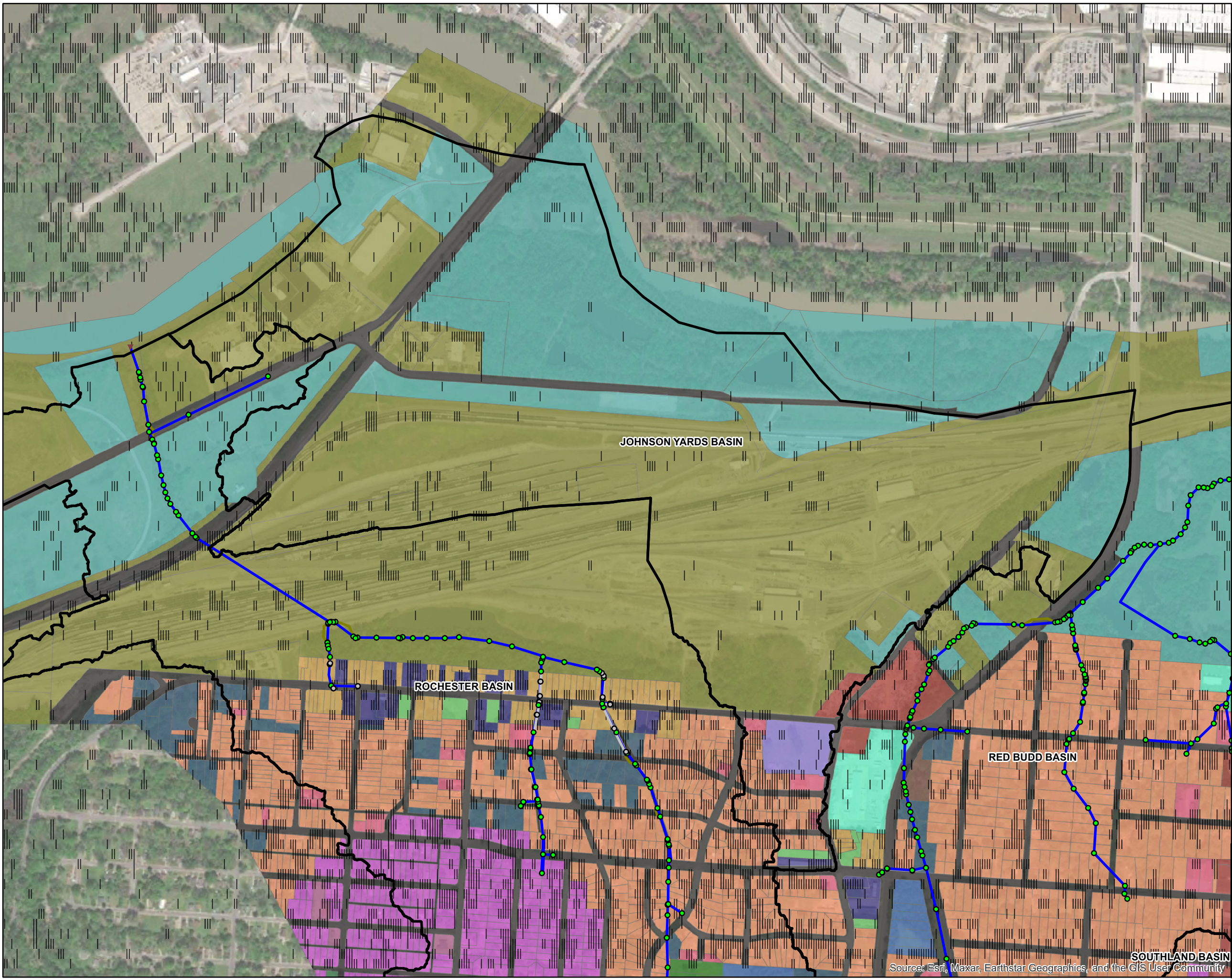


- Legend:**
- Drainage Basin Boundary
 - Junction**
 - Active
 - Inactive
 - Outfall**
 - ▼ Active
 - Conduit**
 - Active
 - Inactive
 - Weir**
 - Active
 - Land Use**
 - Anchor - Neighborhood Crossing
 - Anchor Neighborhood - Primarily Single-Unit
 - High Intensity Commercial & Services
 - Industrial
 - Industrial Flex
 - Low Intensity Commercial & Services
 - Modified-Anchor Single Unit-Low Intensity Com.
 - Modified-Anchor Single Unit-Parks & Recreation
 - Modified-High Intensity Commercial-Parks & Rec.
 - Modified-Industrial Flex-Parks & Recreation
 - Modified-Industrial-Open Spaces & Natural
 - Modified-Low Intensity Commercial-Parks & Rec.
 - Modified-Low Intensity Commercial-Single Unit
 - Modified-Multifamily-Parks & Recreation
 - Modified-Single Unit-Low Intensity Com.
 - Modified-Single Unit-Open & Natural
 - Open Spaces & Natural Features
 - Parks & Recreational Facilities
 - Primarily Multifamily Neighborhood
 - Primarily Single-Unit Neighborhood
 - Public & Quasi-Public Buildings & Uses
 - Roadway and Waterway



▲ NORTH	1 inch = 750 feet	
Rochester Land Use		
Exhibit 9	15640750 Project No.	June 2023 Date

Source: Esri, Maxar, Earthstar Geographics, and the GIS User Community

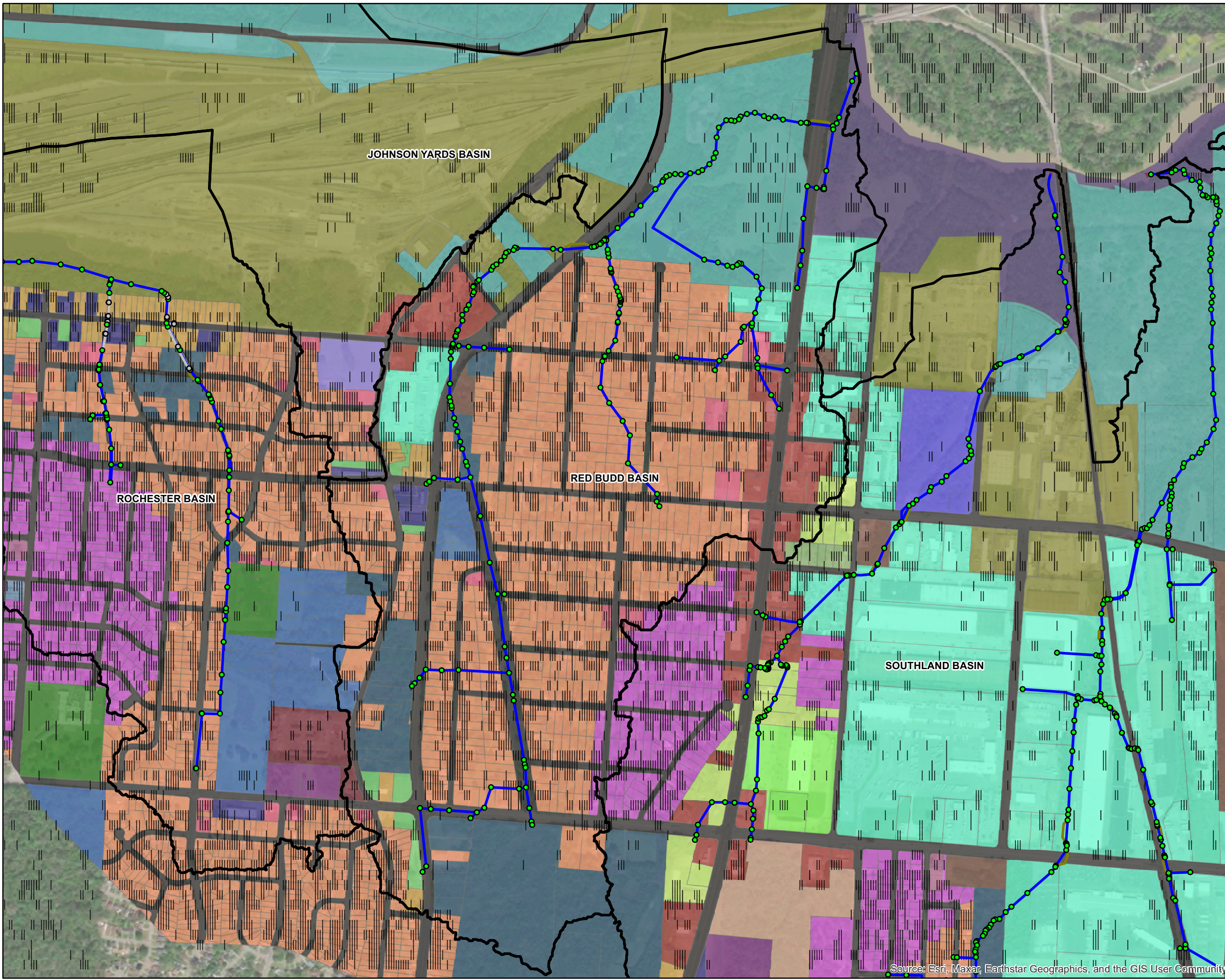


- Legend:**
- Drainage Basin Boundary
 - Junction**
 - Active
 - Inactive
 - Outfall**
 - ▼ Active
 - Conduit**
 - Active
 - Inactive
 - Weir**
 - Active
 - Land Use**
 - Anchor Neighborhood - Primarily Single-Unit
 - High Intensity Commercial & Services
 - Industrial
 - Industrial Flex
 - Low Intensity Commercial & Services
 - Modified-Anchor Single Unit-Low Intensity Com.
 - Modified-Anchor Single Unit-Parks & Recreation
 - Modified-High Intensity Commercial-Parks & Rec.
 - Modified-Industrial Flex-Parks & Recreation
 - Modified-Industrial-Open Spaces & Natural
 - Modified-Low Intensity Commercial-Parks & Rec.
 - Modified-Low Intensity Commercial-Single Unit
 - Modified-Single Unit-Low Intensity Com.
 - Modified-Single Unit-Open & Natural
 - Parks & Recreational Facilities
 - Primarily Single-Unit Neighborhood
 - Public & Quasi-Public Buildings & Uses
 - Roadway and Waterway



NORTH	1 inch = 750 feet		
Johnson Yards Land Use			
Exhibit 10	15640750	June 2023	
	<small>Project No.</small>	<small>Date</small>	

Source: Esri, Maxar, Earthstar Geographics, and the GIS User Community

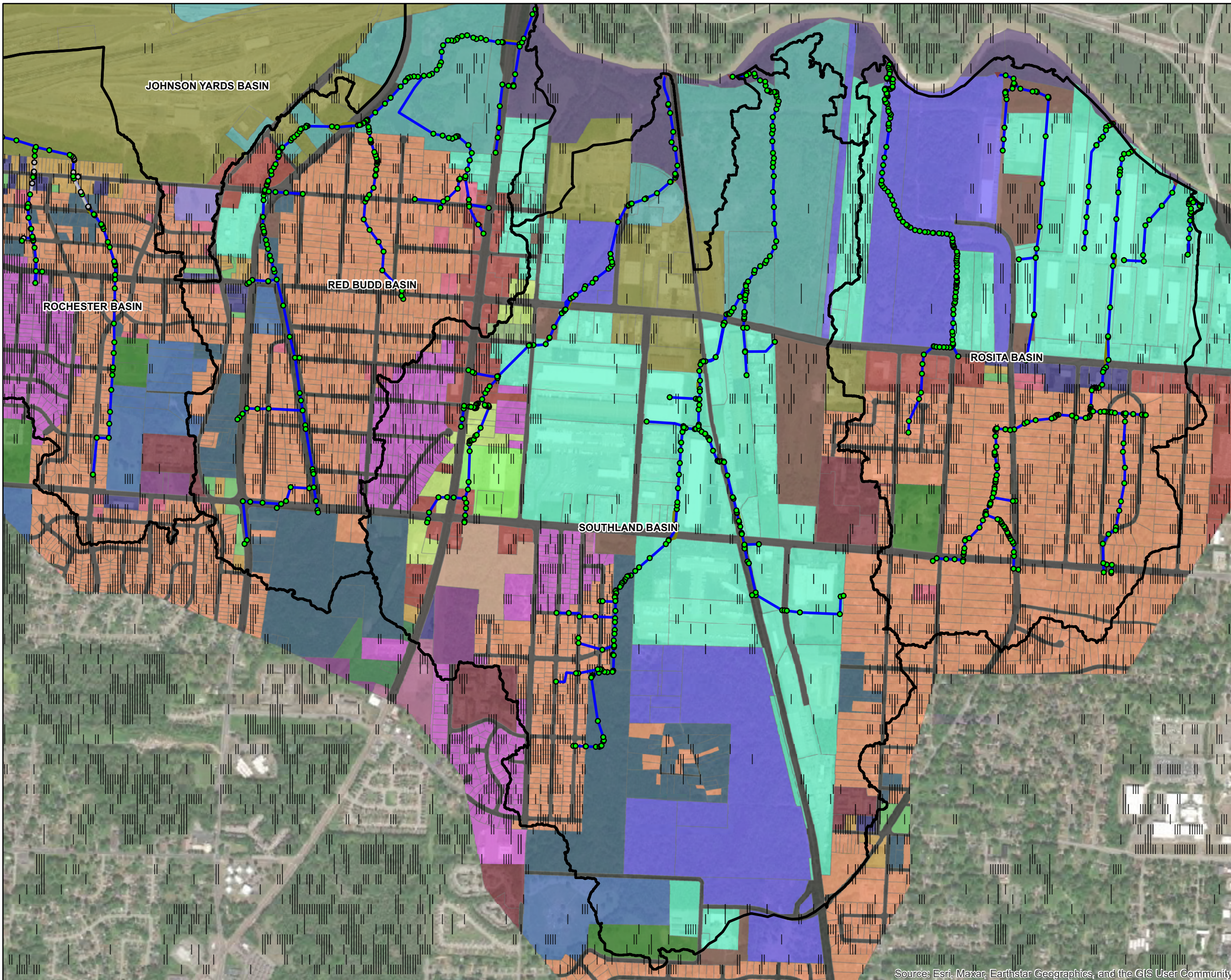


- Legend:**
- Drainage Basin Boundary
 - Junction**
 - Active
 - Inactive
 - Outfall**
 - ▼ Active
 - Conduit**
 - Active
 - Inactive
 - Weir**
 - Active
 - Land Use**
 - Anchor - Neighborhood Crossing
 - Anchor - Neighborhood Main Street
 - Anchor Neighborhood - Primarily Single-Unit
 - High Intensity Commercial & Services
 - Industrial
 - Industrial Flex
 - Low Intensity Commercial & Services
 - Modified-Anchor Single Unit-Low Intensity Com.
 - Modified-Anchor Single Unit-Parks & Recreation
 - Modified-High Intensity Commercial-Open & Natural
 - Modified-High Intensity Commercial-Parks & Rec.
 - Modified-High Intensity Commercial-Single Unit
 - Modified-Industrial Flex-Open Spaces & Natural
 - Modified-Industrial Flex-Parks & Recreation
 - Modified-Industrial-Open Spaces & Natural
 - Modified-Low Intensity Commercial-Parks & Rec.
 - Modified-Low Intensity Commercial-Single Unit
 - Modified-Multifamily-Parks & Recreation
 - Modified-Multifamily-Single Unit
 - Modified-Single Unit-Low Intensity Com.
 - Modified-Single Unit-Open & Natural
 - Open Spaces & Natural Features
 - Parks & Recreational Facilities
 - Primarily Multifamily Neighborhood
 - Primarily Single-Unit Neighborhood
 - Public & Quasi-Public Buildings & Uses
 - Roadway and Waterway



▲ NORTH	1 inch = 800 feet	
Red Budd Land Use		
Exhibit 11	15640750 Project No.	June 2023 Date

Source: Esri, Maxar, Earthstar Geographics, and the GIS User Community.



- Legend:**
- ▭ Drainage Basin Boundary
 - Junction**
 - Active
 - Inactive
 - Outfall**
 - ▼ Active
 - Conduit**
 - Active
 - Inactive
 - Weir**
 - Active
 - Inactive
 - Land Use**
 - Anchor - Neighborhood Main Street
 - Anchor Neighborhood - Primarily Single-Unit
 - High Intensity Commercial & Services
 - Industrial
 - Industrial Flex
 - Low Intensity Commercial & Services
 - Modified-Anchor Single Unit-Low Intensity Com.
 - Modified-Anchor Single Unit-Parks & Recreation
 - Modified-High Intensity Commercial-Open & Natural
 - Modified-High Intensity Commercial-Parks & Rec.
 - Modified-High Intensity Commercial-Single Unit
 - Modified-Industrial Flex-Open Spaces & Natural
 - Modified-Industrial Flex-Parks & Recreation
 - Modified-Industrial-Open Spaces & Natural
 - Modified-Low Intensity Commercial-Parks & Rec.
 - Modified-Low Intensity Commercial-Single Unit
 - Modified-Multifamily-Parks & Recreation
 - Modified-Multifamily-Single Unit
 - Modified-Single Unit-Low Intensity Com.
 - Modified-Single Unit-Open & Natural
 - Open Spaces & Natural Features
 - Parks & Recreational Facilities
 - Primarily Multifamily Neighborhood
 - Primarily Single-Unit Neighborhood
 - Public & Quasi-Public Buildings & Uses
 - Roadway and Waterway

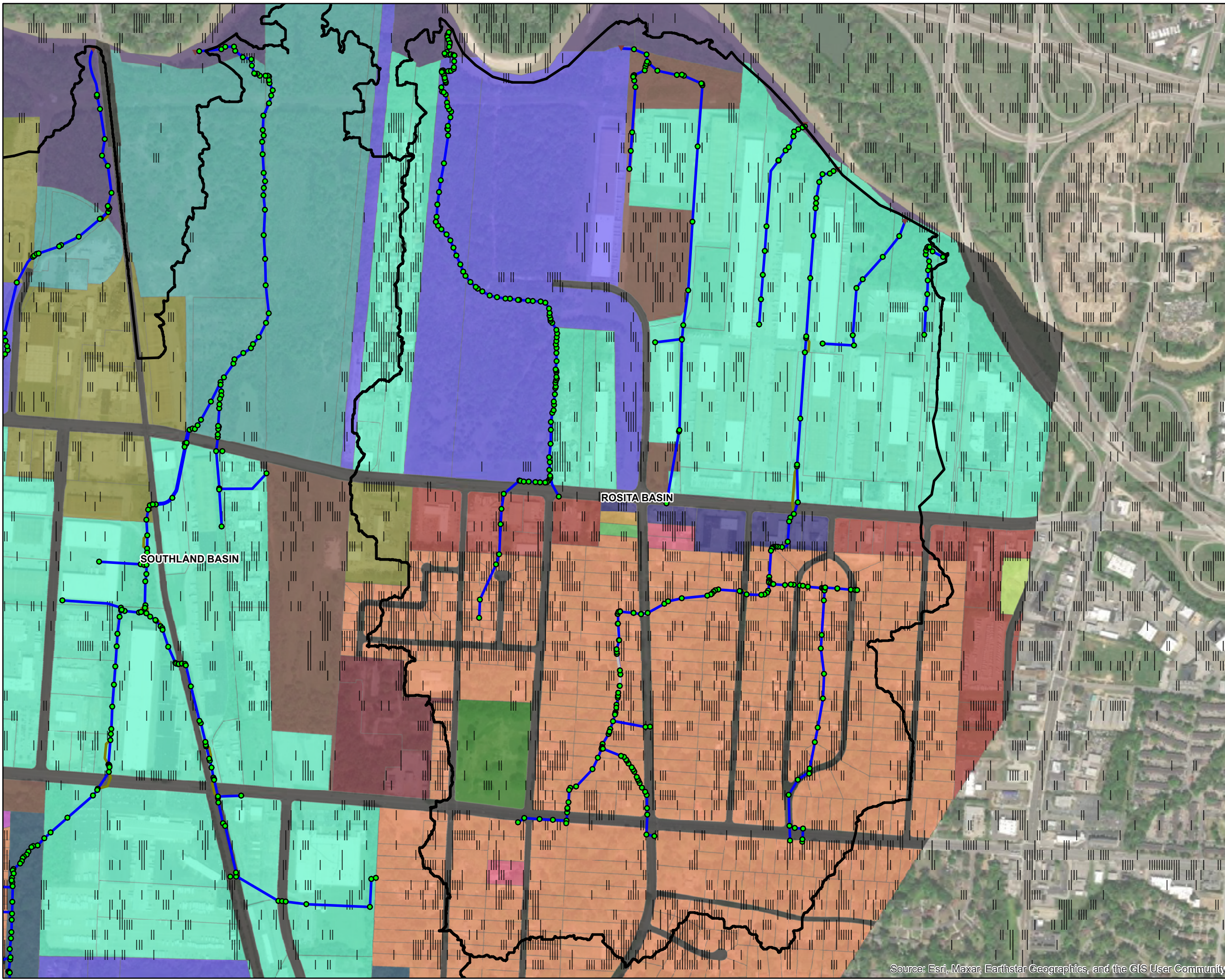


▲ NORTH 1 inch = 1,200 feet

Southland Land Use

Exhibit 12	15640750	June 2023
	Project No.	Date

Source: Esri, Maxar, Earthstar Geographics, and the GIS User Community



- Legend:**
- Drainage Basin Boundary
 - Junction**
 - Active
 - Inactive
 - Outfall**
 - Active
 - Conduit**
 - Active
 - Inactive
 - Weir**
 - Active
 - Inactive
 - Land Use**
 - Anchor Neighborhood - Primarily Single-Unit
 - High Intensity Commercial & Services
 - Industrial
 - Industrial Flex
 - Low Intensity Commercial & Services
 - Modified-High Intensity Commercial-Single Unit
 - Modified-Industrial Flex-Open Spaces & Natural
 - Modified-Industrial Flex-Parks & Recreation
 - Modified-Industrial-Open Spaces & Natural
 - Modified-Low Intensity Commercial-Parks & Rec.
 - Modified-Low Intensity Commercial-Single Unit
 - Modified-Single Unit-Low Intensity Com.
 - Modified-Single Unit-Open & Natural
 - Open Spaces & Natural Features
 - Primarily Multifamily Neighborhood
 - Primarily Single-Unit Neighborhood
 - Public & Quasi-Public Buildings & Uses
 - Roadway and Waterway



NORTH 1 inch = 750 feet

Rosita Land Use

Exhibit 13	15640750	June 2023
	Project No.	Date

Source: Esri, Maxar, Earthstar Geographics, and the GIS User Community