

Legend:

□ Drainage Basin Boundary

Soil Texture

- CLAY
- SILTLOAM
- SILTYCLAY
- WATER

Soil Texture ID	Base Pre-Calibration Soil Infiltration Parameters		
	Green-Ampt Suction Head (in)	Green-Ampt Hydraulic Conductivity (in/hr)	Green-Ampt Initial Moisture Deficit
CLAY	12.450	0.010	0.097
SILT LOAM	6.570	0.260	0.217
SILTY CLAY	11.500	0.020	0.108
WATER	5.000	0.001	0.100

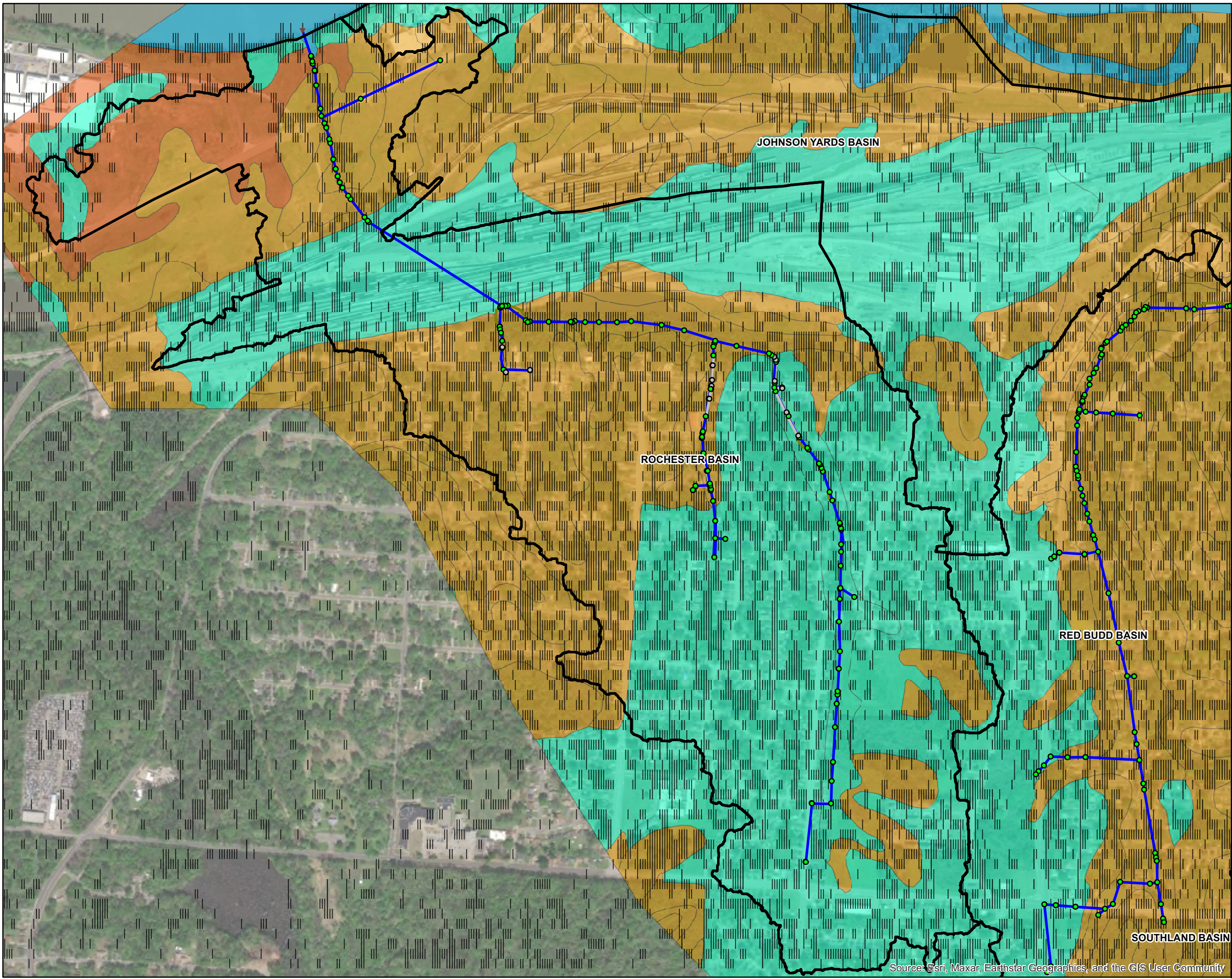


▲ NORTH 1 inch = 1,600 feet

Soil Texture Classification

Exhibit 14	15640750 Project No.	June 2023 Date
------------	-------------------------	-------------------

Source: Esri, Maxar, Earthstar Geographics, and the GIS User Community

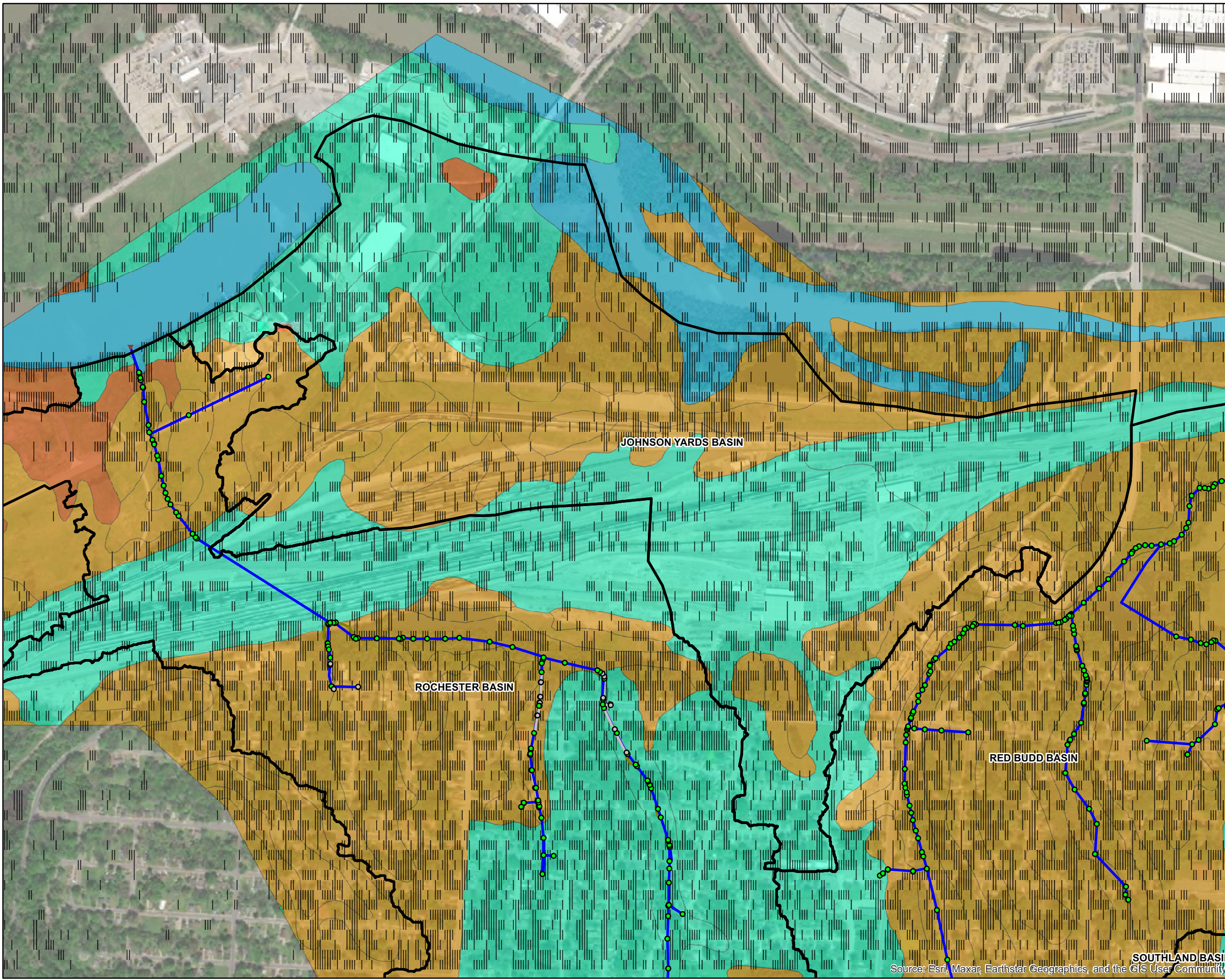


- Legend:**
- ▭ Drainage Basin Boundary
 - Junction**
 - Active
 - Inactive
 - Outfall**
 - ▼ Active
 - Conduit**
 - Active
 - Inactive
 - Weir**
 - Active
 - Soil Texture**
 - CLAY
 - SILTLOAM
 - SILTYCLAY
 - WATER



▲ NORTH		1 inch = 750 feet
Rochester Soil Texture		
Exhibit 15	15640750 Project No.	June 2023 Date

Source: Esri, Maxar, Earthstar Geographics, and the GIS User Community



- Legend:**
- Drainage Basin Boundary
 - Junction**
 - Active
 - Inactive
 - Outfall**
 - Active
 - Conduit**
 - Active
 - Inactive
 - Weir**
 - Active
 - Soil Texture**
 - CLAY
 - SILTLOAM
 - SILTYCLAY
 - WATER

JOHNSON YARDS BASIN

ROCHESTER BASIN

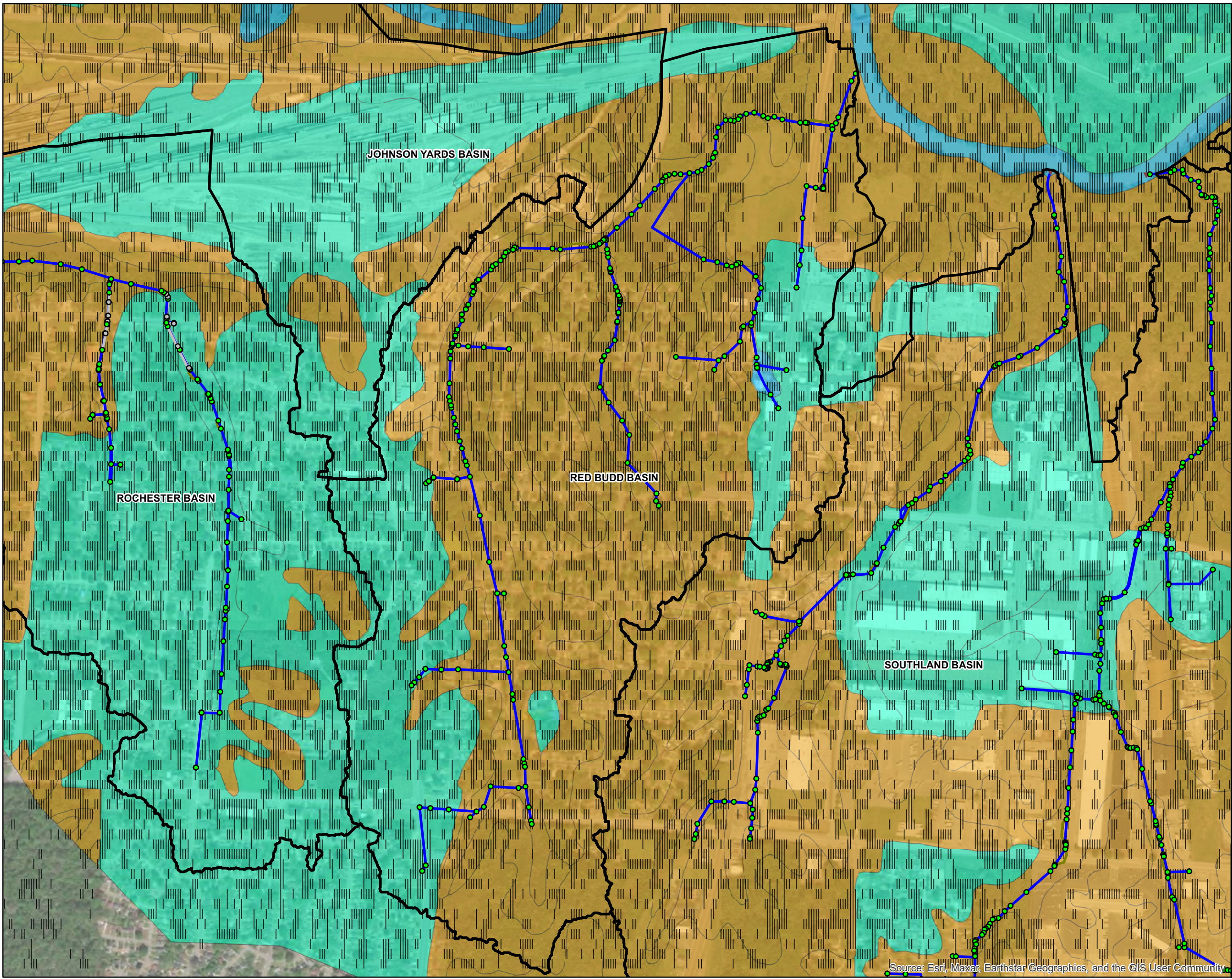
RED BUDD BASIN

SOUTHLAND BASIN



	1 inch = 750 feet	
JOHNSON YARDS SOIL TEXTURE		
Exhibit 16	15640750 Project No.	June 2023 Date

Source: Esri, Maxar, Earthstar Geographics, and the GIS User Community



- Legend:**
- Drainage Basin Boundary
 - Junction**
 - Active
 - Inactive
 - Outfall**
 - Active
 - Conduit**
 - Active
 - Inactive
 - Weir**
 - Active
 - Soil Texture**
 - SILTLOAM
 - SILTYCLAY
 - WATER



	1 inch = 800 feet	
Red Budd Soil Texture		
Exhibit 17	15640750 Project No.	June 2023 Date

Source: Esri, Maxar, Earthstar Geographics, and the GIS User Community