

- Legend:**
- ▭ Drainage Basin Boundary
 - Junction**
 - Active
 - Inactive
 - Outfall**
 - ▼ Active
 - Conduit**
 - Active
 - Inactive
 - Weir**
 - Active
 - Inactive
 - Soil Texture**
 - SILTLOAM
 - SILTYCLAY
 - WATER

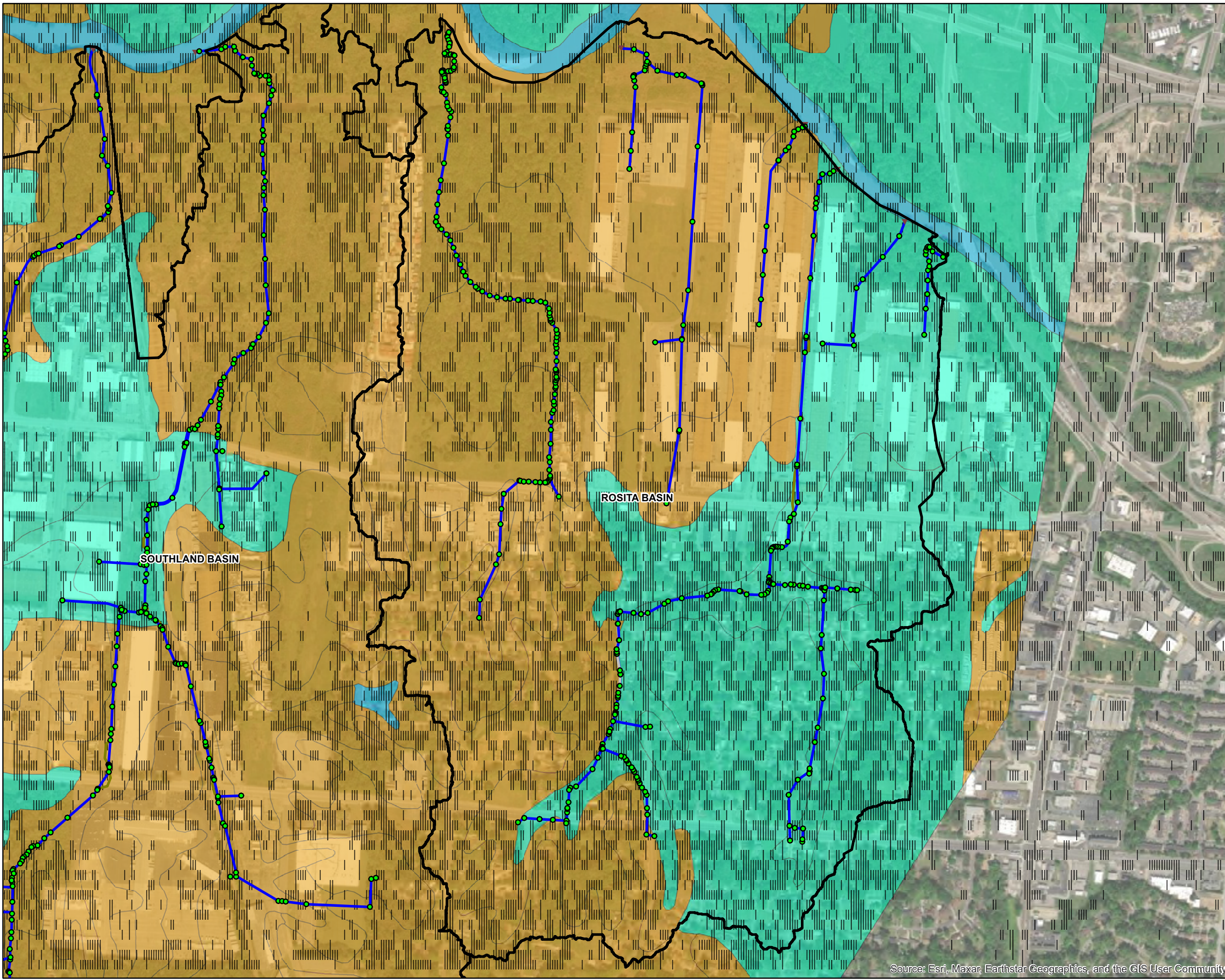


▲ NORTH 1 inch = 1,200 feet

Southland Soil Texture

Exhibit 18	15640750	June 2023
	Project No.	Date

Source: Esri, Maxar, Earthstar Geographics, and the GIS User Community



- Legend:**
- Drainage Basin Boundary
 - Junction**
 - Active
 - Inactive
 - Outfall**
 - Active
 - Inactive
 - Conduit**
 - Active
 - Inactive
 - Weir**
 - Active
 - Inactive
 - Soil Texture**
 - SILTLOAM
 - SILTYCLAY
 - WATER

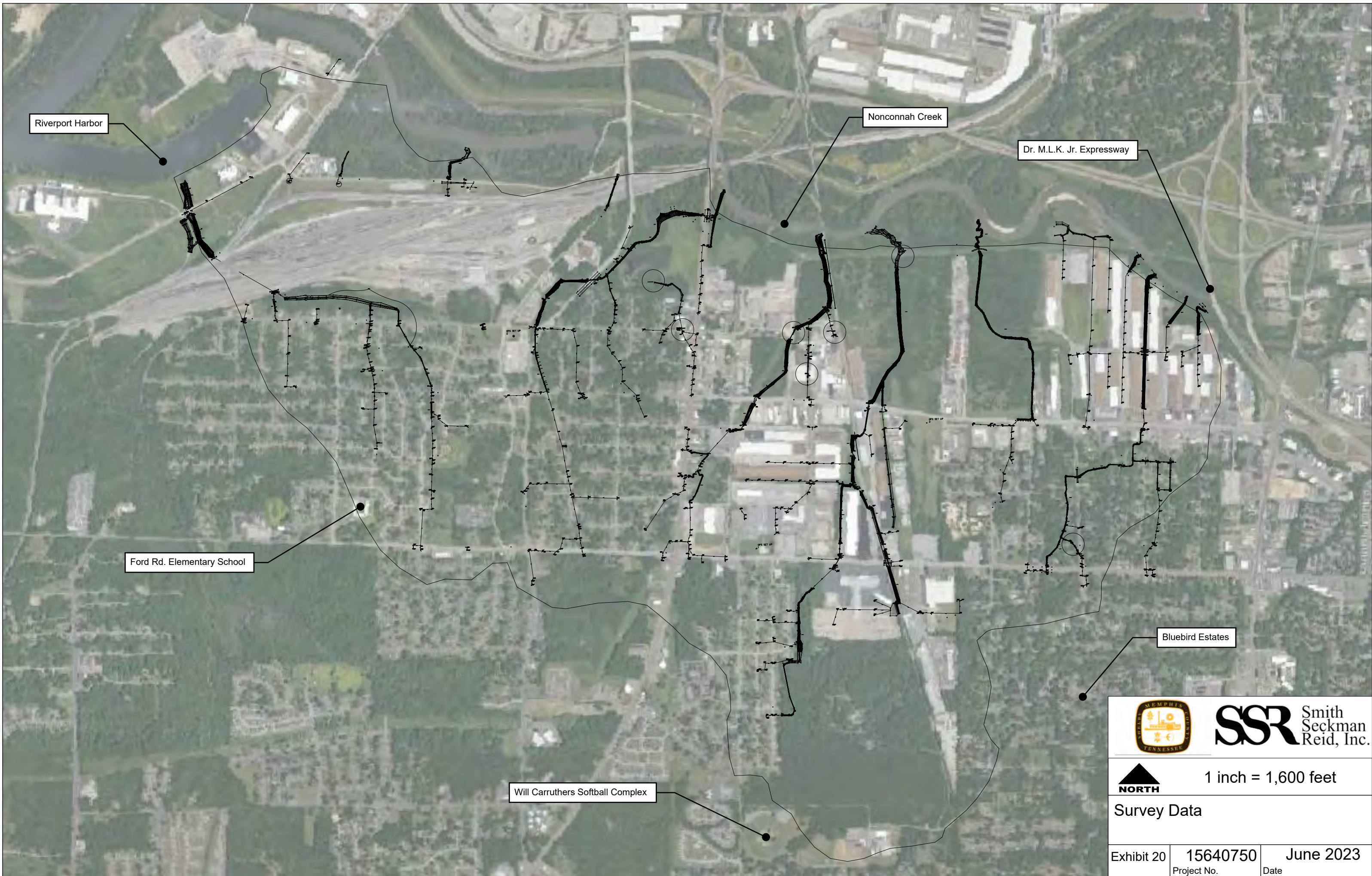


NORTH 1 inch = 750 feet

Rosita Soil Texture

Exhibit 19	15640750	June 2023
	Project No.	Date

Source: Esri, Maxar, Earthstar Geographics, and the GIS User Community



Riverport Harbor

Nonconnah Creek

Dr. M.L.K. Jr. Expressway

Ford Rd. Elementary School

Bluebird Estates

Will Carruthers Softball Complex



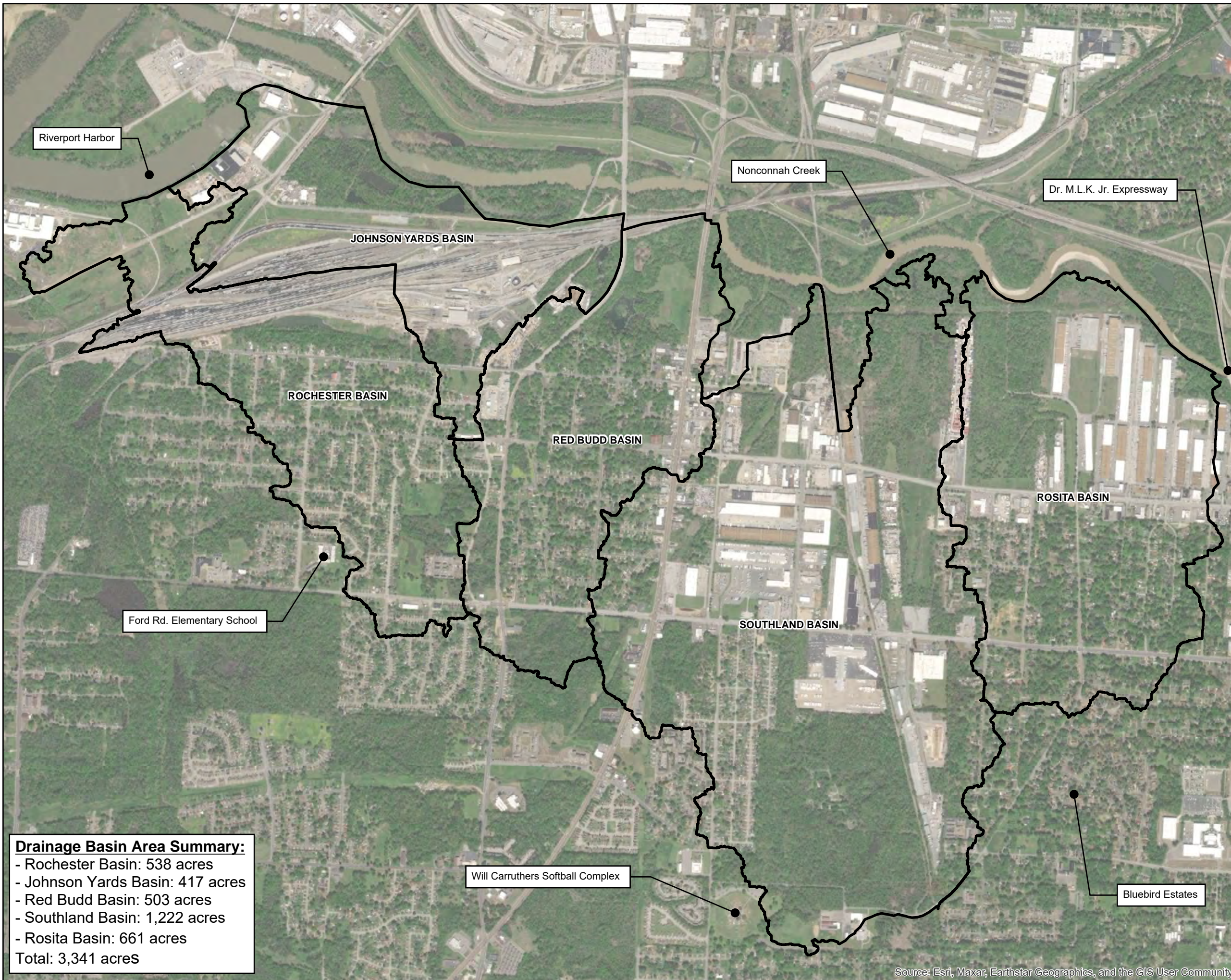
SSR Smith
Seckman
Reid, Inc.



1 inch = 1,600 feet

Survey Data

Exhibit 20	15640750	June 2023
	Project No.	Date



Legend:

□ Drainage Basin Boundary

Drainage Basin Area Summary:

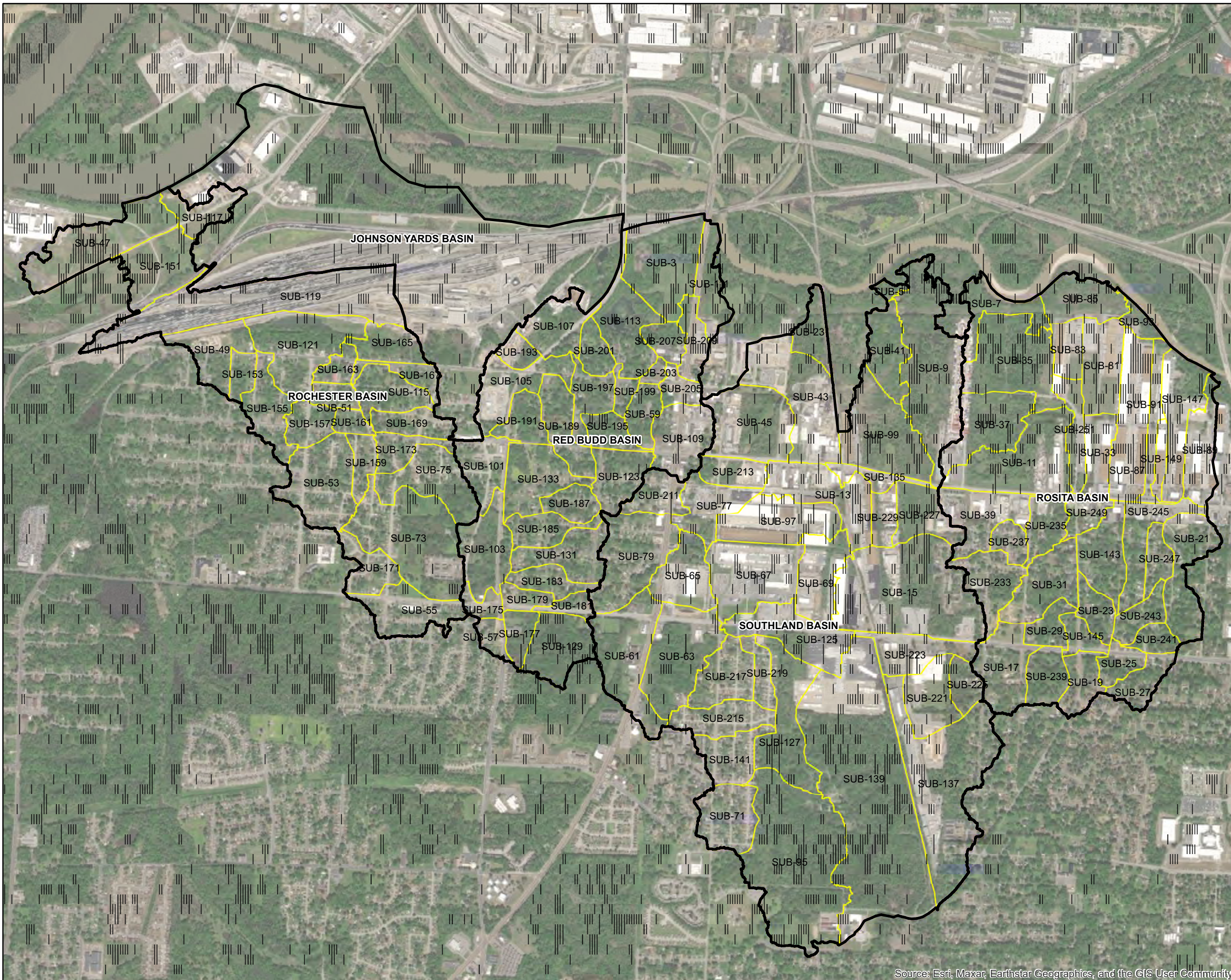
- Rochester Basin: 538 acres
- Johnson Yards Basin: 417 acres
- Red Budd Basin: 503 acres
- Southland Basin: 1,222 acres
- Rosita Basin: 661 acres

Total: 3,341 acres





<p>N</p>	1 inch = 1,600 feet	
	All Study Area Basins	
Exhibit 21	15640750	June 2023
	Project No.	Date


Source: Esri, Maxar, Earthstar Geographics, and the GIS User Community



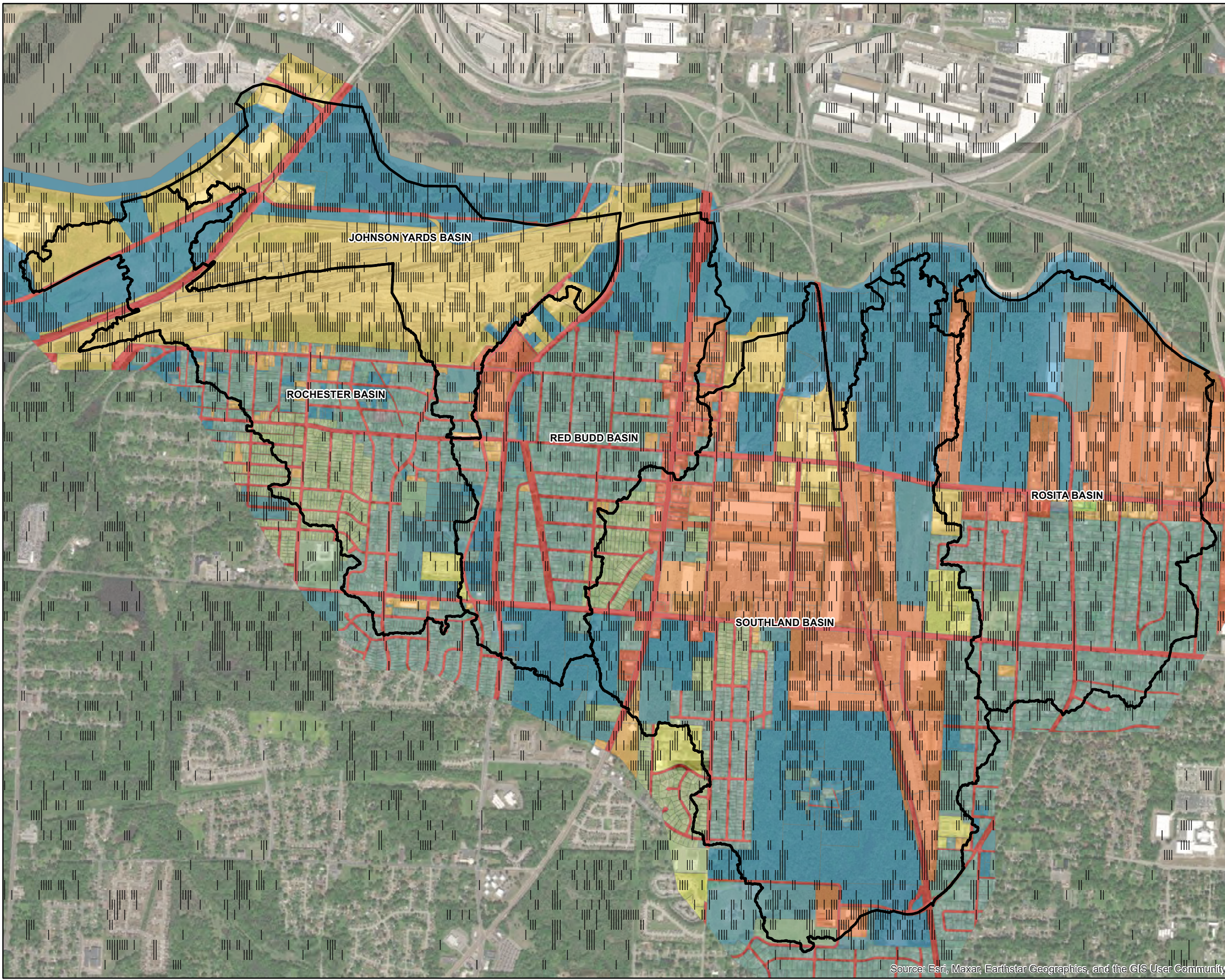
Legend:

-  Drainage Basin Boundary
- Subcatchments**
-  Drainage Study Subcatchments










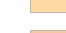
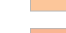
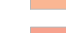
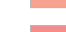



	1 inch = 1,600 feet	
Sub-Basin Delineation		
Exhibit 22	15640750 <small>Project No.</small>	June 2023 <small>Date</small>

Source: Esri, Maxar, Earthstar Geographics, and the GIS User Community



Legend:

-  Drainage Basin Boundary
- Impervious Area Percentage**
-  2
-  10
-  35
-  40
-  45
-  50
-  65
-  72
-  75
-  80
-  82
-  85
-  98

JOHNSON YARDS BASIN

ROCHESTER BASIN

RED BUDD BASIN

SOUTHLAND BASIN

ROSITA BASIN



1 inch = 1,600 feet

Impervious Area Percentage

Exhibit 23

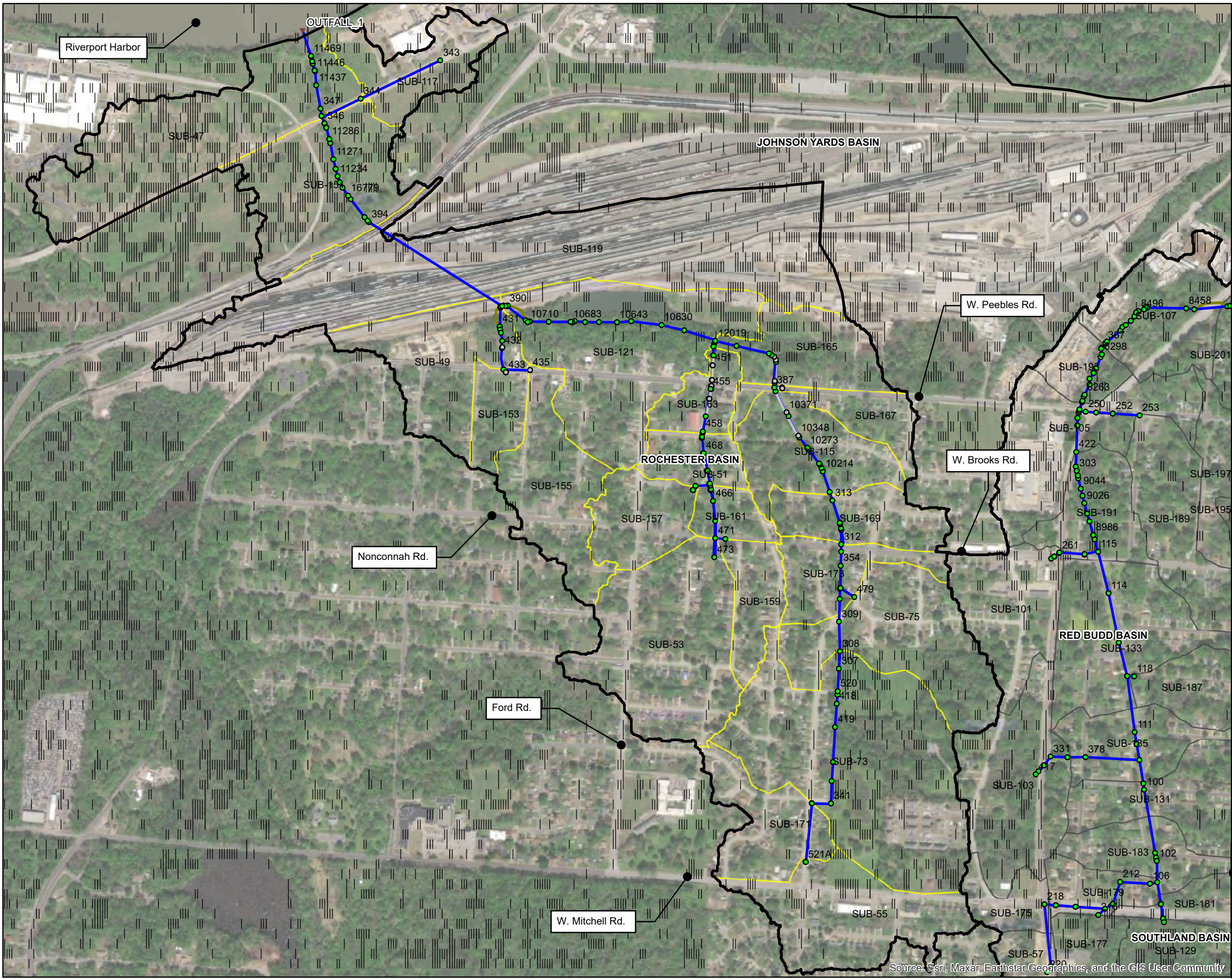
15640750

June 2023

Project No.

Date

Source: Esri, Maxar, Earthstar Geographics, and the GIS User Community



- Legend:**
- Drainage Basin Boundary
 - Junction**
 - Active
 - Inactive
 - Outfall**
 - Active
 - Conduit**
 - Active
 - Inactive
 - Weir**
 - Active
 - Subcatchments**
 - Other Subcatchments
 - Rochester Subcatchments



		1 inch = 750 feet
Rochester Basin Model		
Exhibit 24	15640750	June 2023
	<small>Project No.</small>	<small>Date</small>

Source: Esri, Maxar, Earthstar Geographics, and the GIS User Community



- Legend:**
- ▭ Drainage Basin Boundary
 - Junction**
 - Active
 - Inactive
 - Outfall**
 - ▼ Active
 - Inactive
 - Conduit**
 - Active
 - Inactive
 - Weir**
 - Active
 - Subcatchments**
 - ▭ Other Subcatchments
 - ▭ Red Budd Subcatchments

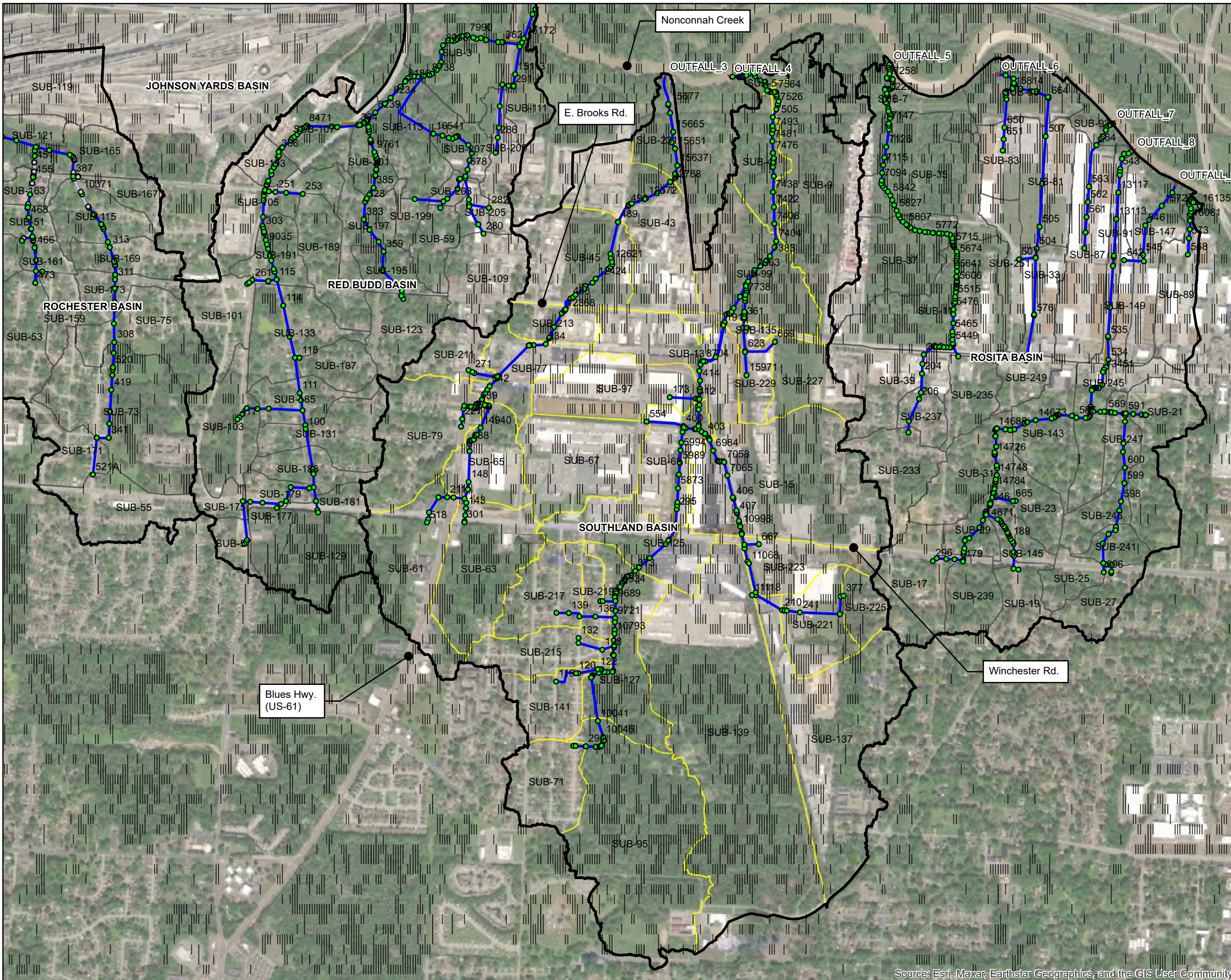


▲ NORTH 1 inch = 800 feet

Red Budd Basin Model

Exhibit 25	15640750	June 2023
	Project No.	Date

Source: Esri, Maxar, Earthstar Geographics, and the GIS User Community



- Legend:**
- Drainage Basin Boundary
 - Junction**
 - Active
 - Inactive - Outfall**
 - ▼ Active - Conduit**
 - Active
 - Inactive - Weir**
 - Active
 - Inactive - Subcatchments**
 - Other Subcatchments
 - Southland Subcatchments



▲ NORTH 1 inch = 1,200 feet

Southland Basin Model

Exhibit 26	15640750	June 2023
	Project No.	Date

Source: Esri, Maxar, Earthstar Geographics, and the GIS User Community