

- Legend:**
- ▭ Drainage Basin Boundary
  - Junction**
    - Active
    - Inactive
  - Outfall**
    - ▼ Active
  - Conduit**
    - Active
    - Inactive
  - Weir**
    - Active
    - Inactive
  - Soil Texture**
    - SILTLOAM
    - SILTYCLAY
    - WATER

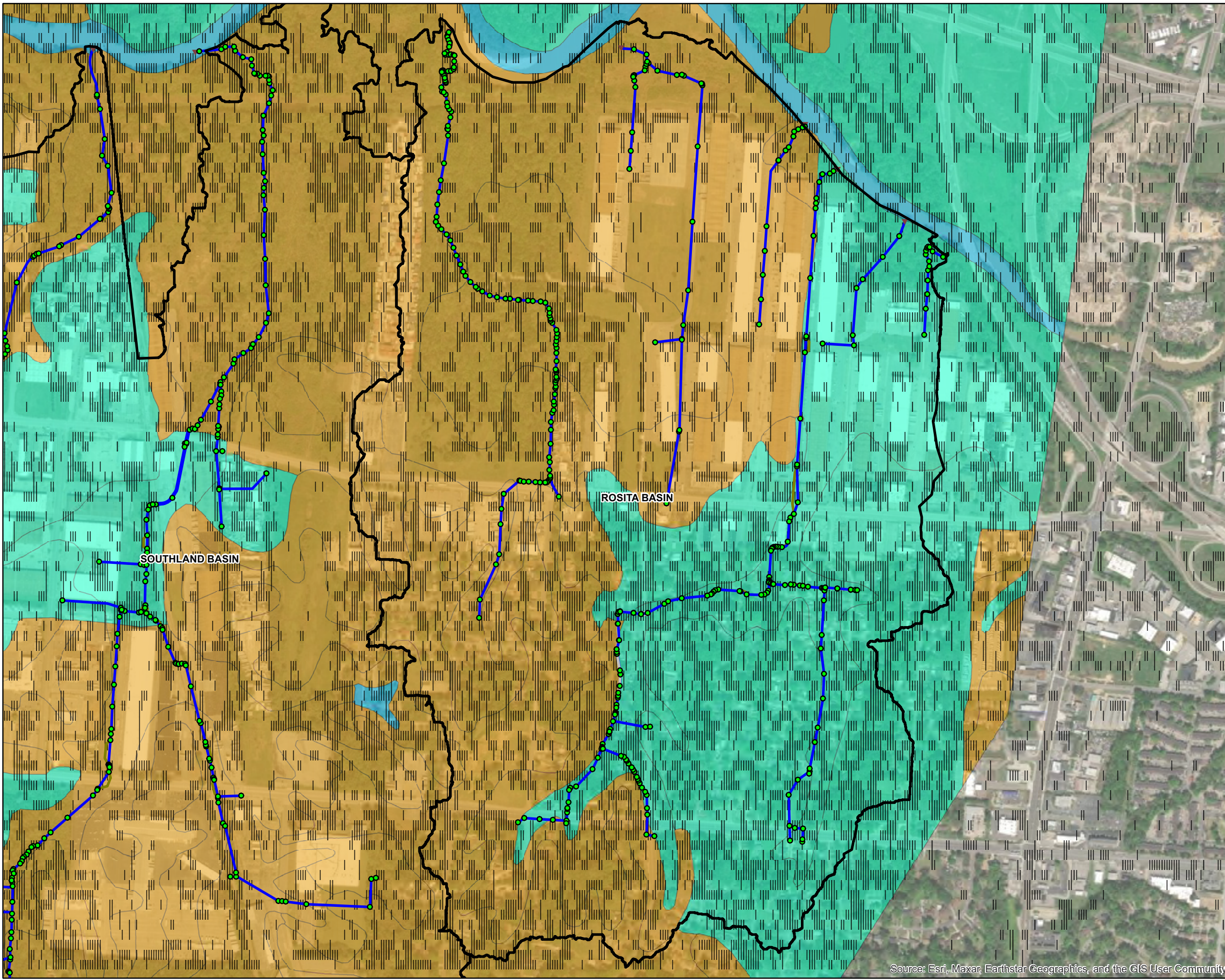


▲ NORTH 1 inch = 1,200 feet

Southland Soil Texture

Exhibit 18	15640750	June 2023
	Project No.	Date

Source: Esri, Maxar, Earthstar Geographics, and the GIS User Community



- Legend:**
- ▭ Drainage Basin Boundary
  - Junction**
    - Active
    - Inactive
  - Outfall**
    - ▼ Active
  - Conduit**
    - Active
    - Inactive
  - Weir**
    - Active
    - Inactive
  - Soil Texture**
    - SILTLOAM
    - SILTYCLAY
    - WATER

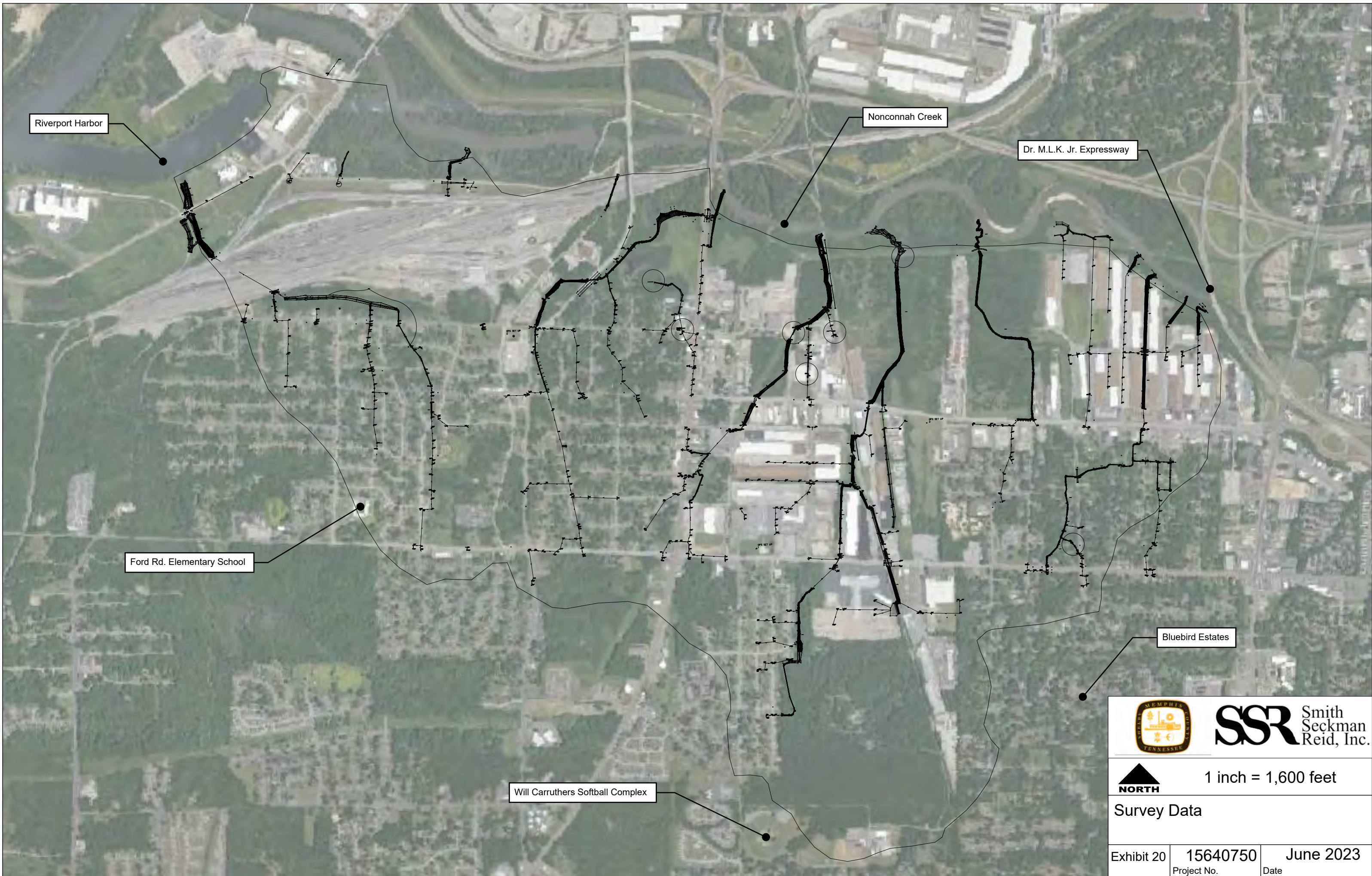


▲ NORTH 1 inch = 750 feet

Rosita Soil Texture

Exhibit 19	15640750	June 2023
	Project No.	Date

Source: Esri, Maxar, Earthstar Geographics, and the GIS User Community



Riverport Harbor

Nonconnah Creek

Dr. M.L.K. Jr. Expressway

Ford Rd. Elementary School

Bluebird Estates

Will Carruthers Softball Complex



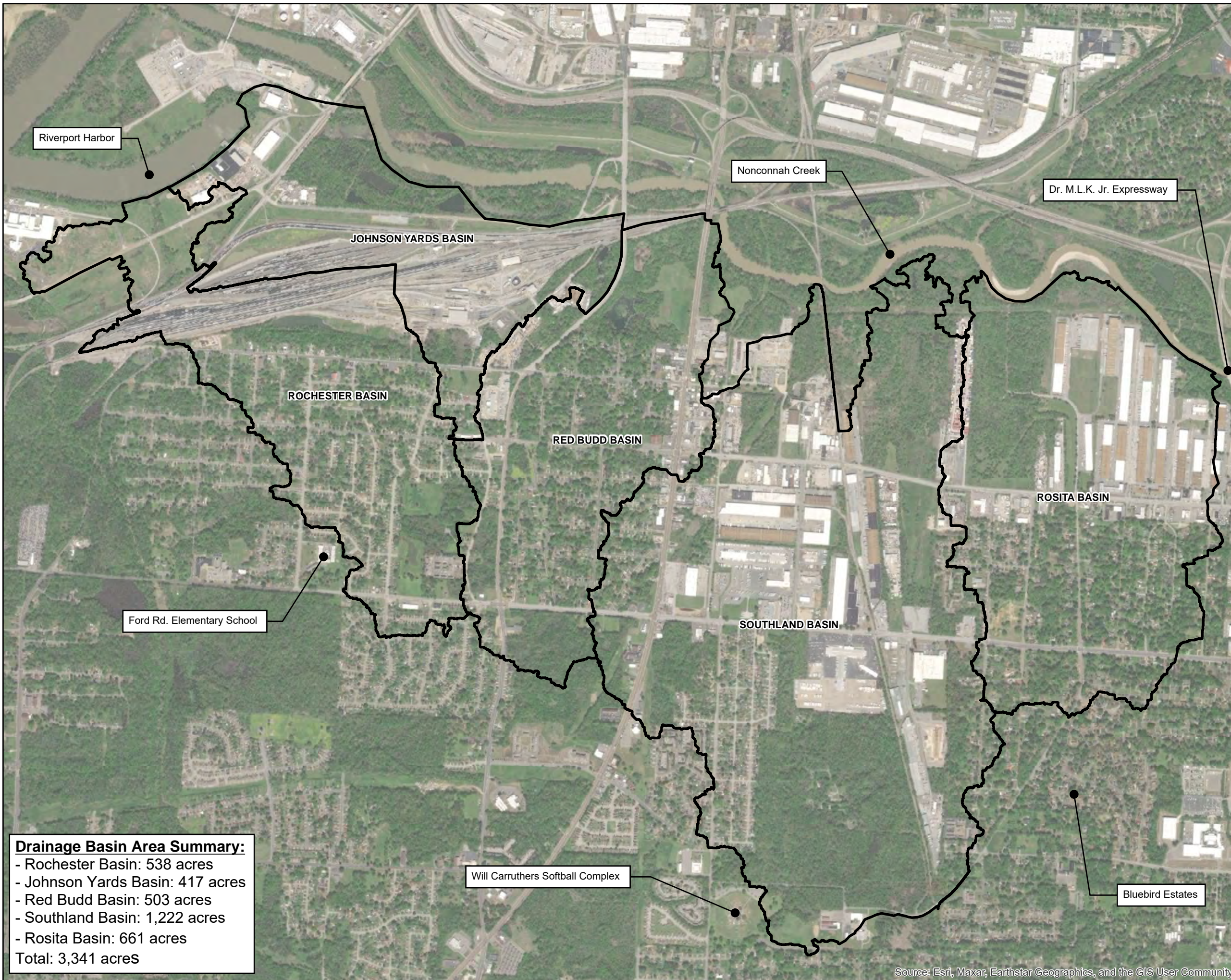
**SSR** Smith  
Seckman  
Reid, Inc.



1 inch = 1,600 feet

Survey Data

Exhibit 20	15640750	June 2023
	Project No.	Date



**Legend:**

□ Drainage Basin Boundary

**Drainage Basin Area Summary:**

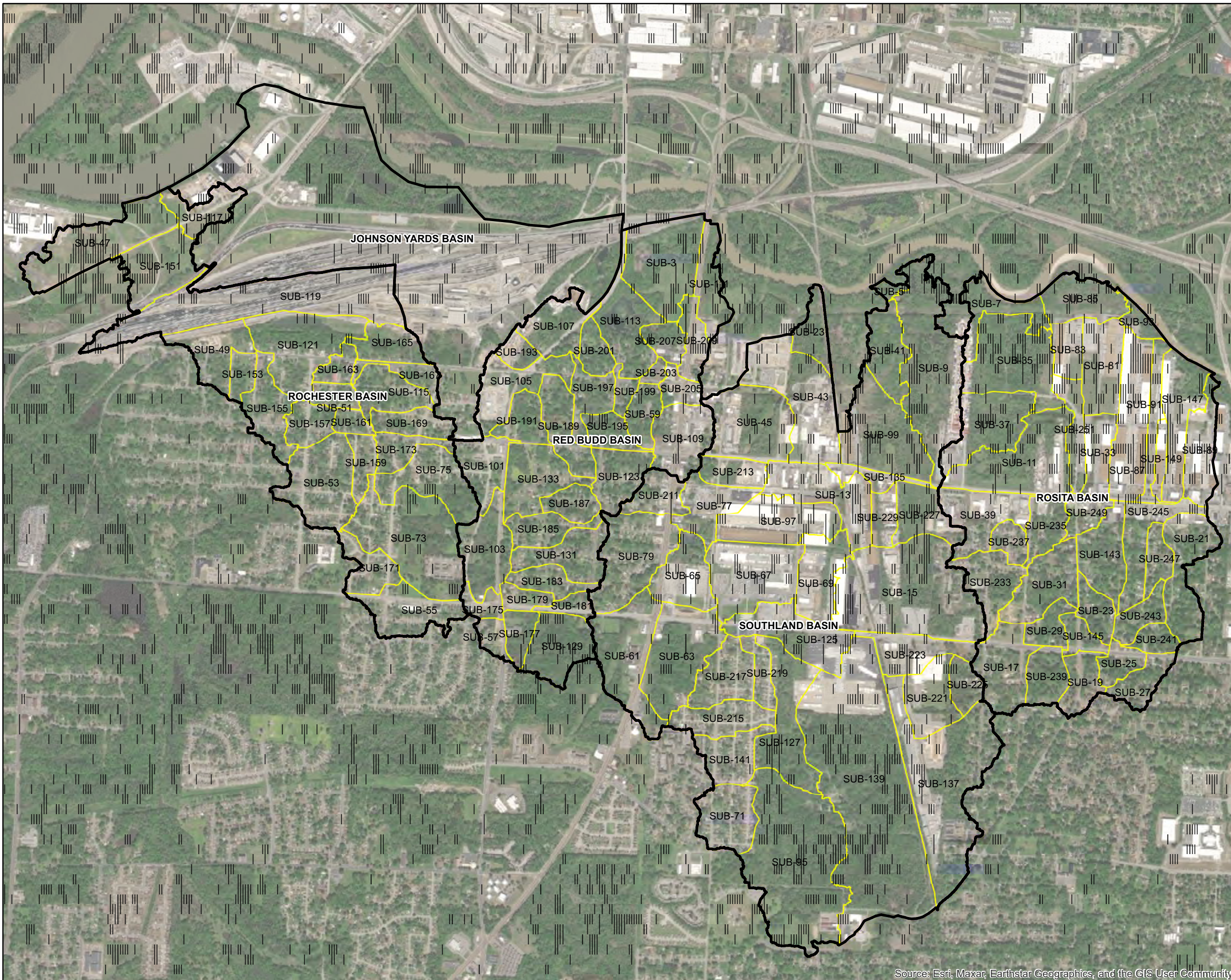
- Rochester Basin: 538 acres
- Johnson Yards Basin: 417 acres
- Red Budd Basin: 503 acres
- Southland Basin: 1,222 acres
- Rosita Basin: 661 acres

Total: 3,341 acres





<p><b>N</b></p>	1 inch = 1,600 feet	
	All Study Area Basins	
Exhibit 21	15640750	June 2023
	Project No.	Date


Source: Esri, Maxar, Earthstar Geographics, and the GIS User Community



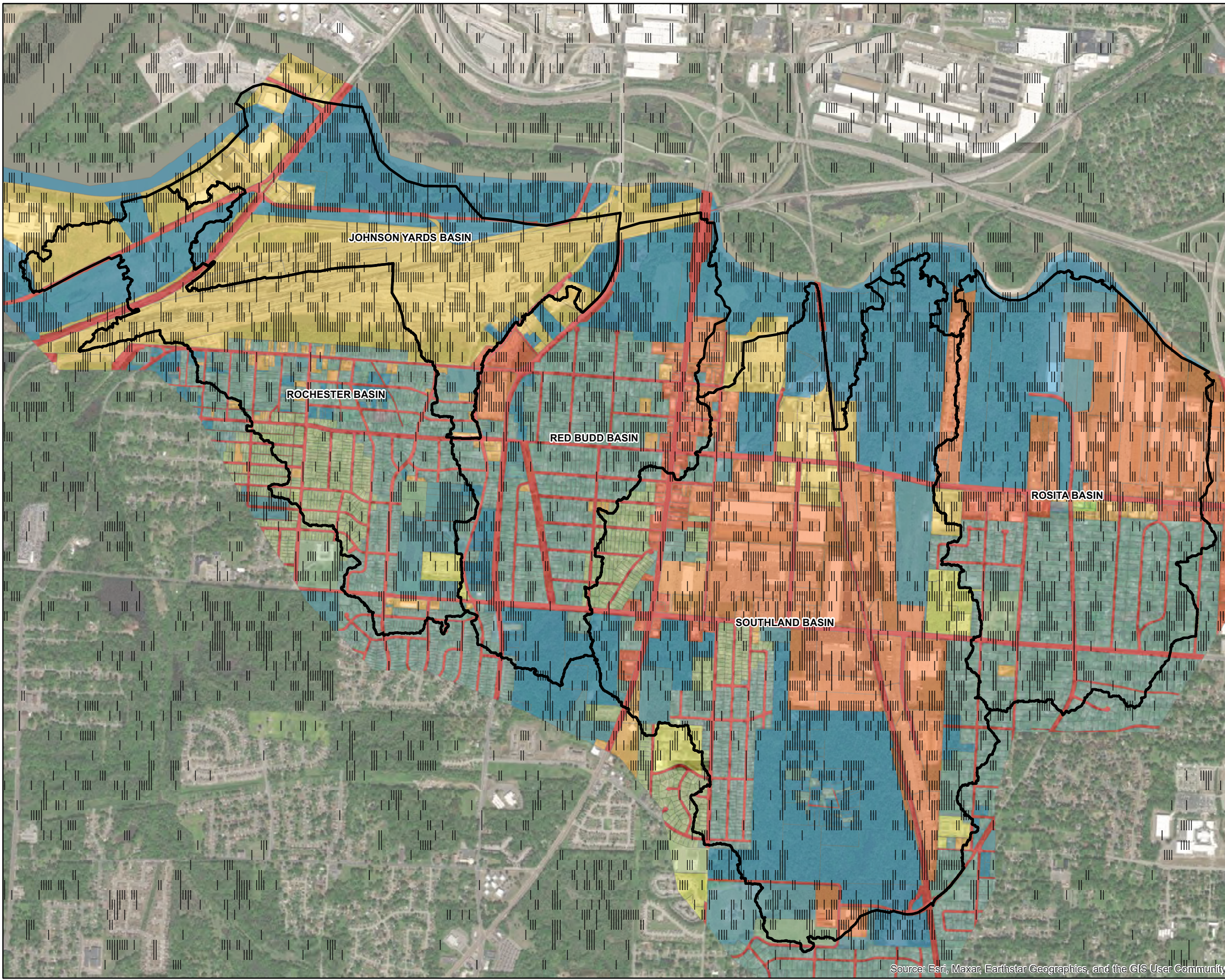
**Legend:**

-  Drainage Basin Boundary
- Subcatchments**
-  Drainage Study Subcatchments









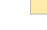







	1 inch = 1,600 feet	
Sub-Basin Delineation		
Exhibit 22	15640750 Project No.	June 2023 Date

Source: Esri, Maxar, Earthstar Geographics, and the GIS User Community



**Legend:**

-  Drainage Basin Boundary
- Impervious Area Percentage**
-  2
-  10
-  35
-  40
-  45
-  50
-  65
-  72
-  75
-  80
-  82
-  85
-  98

JOHNSON YARDS BASIN

ROCHESTER BASIN

RED BUDD BASIN

SOUTHLAND BASIN

ROSITA BASIN



1 inch = 1,600 feet

Impervious Area Percentage

Exhibit 23

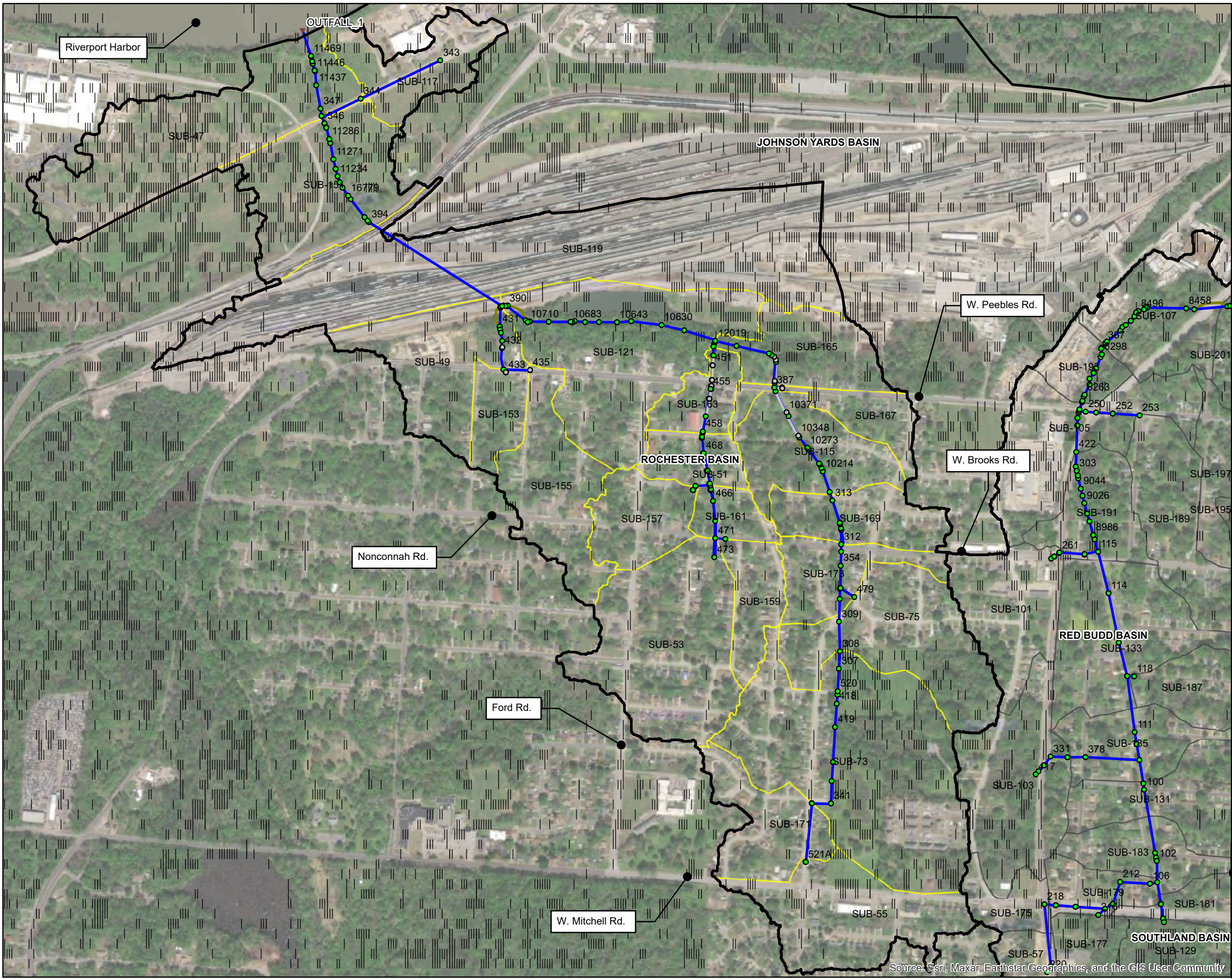
15640750

June 2023

Project No.

Date

Source: Esri, Maxar, Earthstar Geographics, and the GIS User Community



- Legend:**
- Drainage Basin Boundary
  - Junction**
    - Active
    - Inactive
  - Outfall**
    - ▼ Active
  - Conduit**
    - Active
    - Inactive
  - Weir**
    - Active
  - Subcatchments**
    - Other Subcatchments
    - Rochester Subcatchments



	1 inch = 750 feet	
<b>Rochester Basin Model</b>		
Exhibit 24	15640750	June 2023
	Project No.	Date

Source: Esri, Maxar, Earthstar Geographics, and the GIS User Community



- Legend:**
- ▭ Drainage Basin Boundary
  - Junction**
    - Active
    - Inactive
  - Outfall**
    - ▼ Active
  - Conduit**
    - Active
    - Inactive
  - Weir**
    - Active
  - Subcatchments**
    - ▭ Other Subcatchments
    - ▭ Red Budd Subcatchments



▲ NORTH		1 inch = 800 feet	
<b>Red Budd Basin Model</b>			
Exhibit 25	15640750	June 2023	
	Project No.	Date	

Source: Esri, Maxar, Earthstar Geographics, and the GIS User Community