


- Legend:**
- City of Memphis Flooding Reports
 - ▭ Improvement Areas
 - ▭ Drainage Basin Boundary
- Junction**
- Active
 - Inactive
- Outfall**
- ▼ Active
 - Inactive
- Conduit**
- Active
 - Inactive
- Weir**
- Active
 - Inactive



 NORTH		1 inch = 1,600 feet
Flooding Reports and Improvements		
Exhibit 42	15640750 Project No.	June 2023 Date

Source: Esri, Maxar, Earthstar Geographics, and the GIS User Community



Regrade 59 LF channel section from junction 432 to 11790. Lower upstream invert elevation by approximately 0.95' and tie into existing downstream elevation. New grass-lined trapezoidal channel: 5.33' bottom width, 3.4' deep, 2.5:1 side slopes

Replace 178 LF 48" RCP with 178 LF 48" RCP at increased slope.

Replace 34 LF 15" RCP with 34 LF 24" RCP

Replace 30 LF 24" RCP with 30 LF 36" RCP

Replace 217 LF 36" RCP with 217 LF 48" RCP

- Legend:**
- City of Memphis Flooding Reports
 - City of Memphis Parcels
- Junction**
- Existing
 - Improved
 - Inactive
- Conduit**
- Existing
 - Improved
 - Inactive
- Weir**
- Active
- Additional Recommendations Outside of Modeling Scope

- City of Memphis Parcel IDs:**
1. - 075001 00067C
 2. - 075001 00065
 3. - 075001 00064
 4. - 075001 00063
 5. - 075001 00087

Drainage Basin: Rochester

Source: Esri, Maxar, Earthstar Geographics, and the GIS User Community



▲ NORTH 1 inch = 75 feet

IA1 Improvements

Exhibit 43	15640750	June 2023
	Project No.	Date



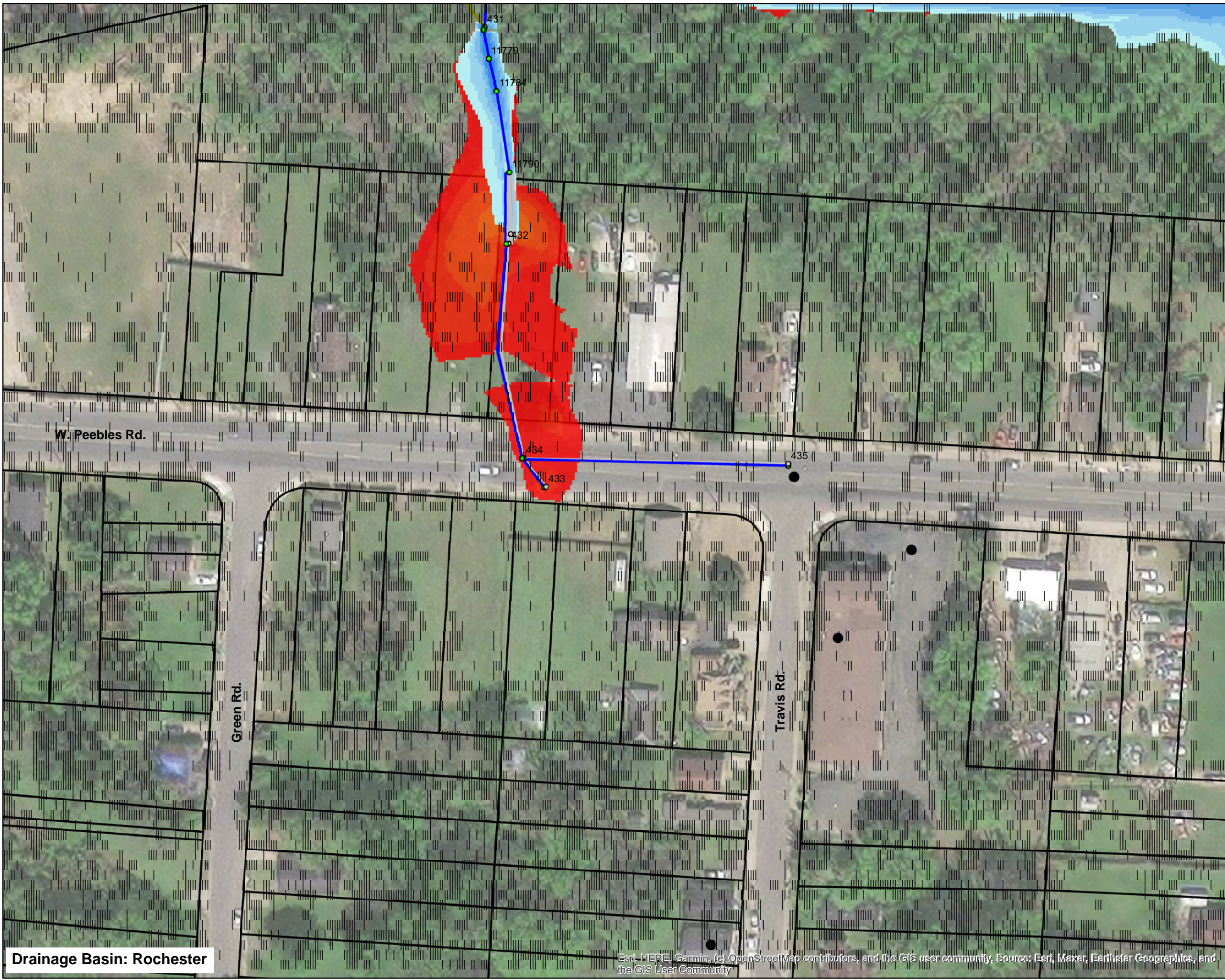
- Legend:**
- City of Memphis Flooding Reports
 - ▭ City of Memphis Parcels
- Junction**
- Active
 - Inactive
- Conduit**
- Active
 - Inactive
- Weir**
- Active
- Improved 10-Year Storm Inundation Depth (feet)**
- 0.01 - 0.5
 - 0.51 - 1
 - 1.01 - 2
 - 2.01 - 3
 - 3.01 - 4
- Existing 10-Year Storm Inundation Depth (feet)**
- 0.01 - 0.5
 - 0.51 - 1
 - 1.01 - 2
 - 2.01 - 3
 - 3.01 - 4

Drainage Basin: Rochester

Source: Esri, Maxar, GeoEye, Earthstar Geographics, CNES/Airbus DS, USDA, USGS, AeroGRID, IGN, and the GIS User Community, Esri, HERE, Garmin, (c) OpenStreetMap contributors, and the GIS user community



▲ NORTH		1 inch = 75 feet
IA1 10-Year Existing vs. Improved		
Exhibit 44	15640750	June 2023
	Project No.	Date



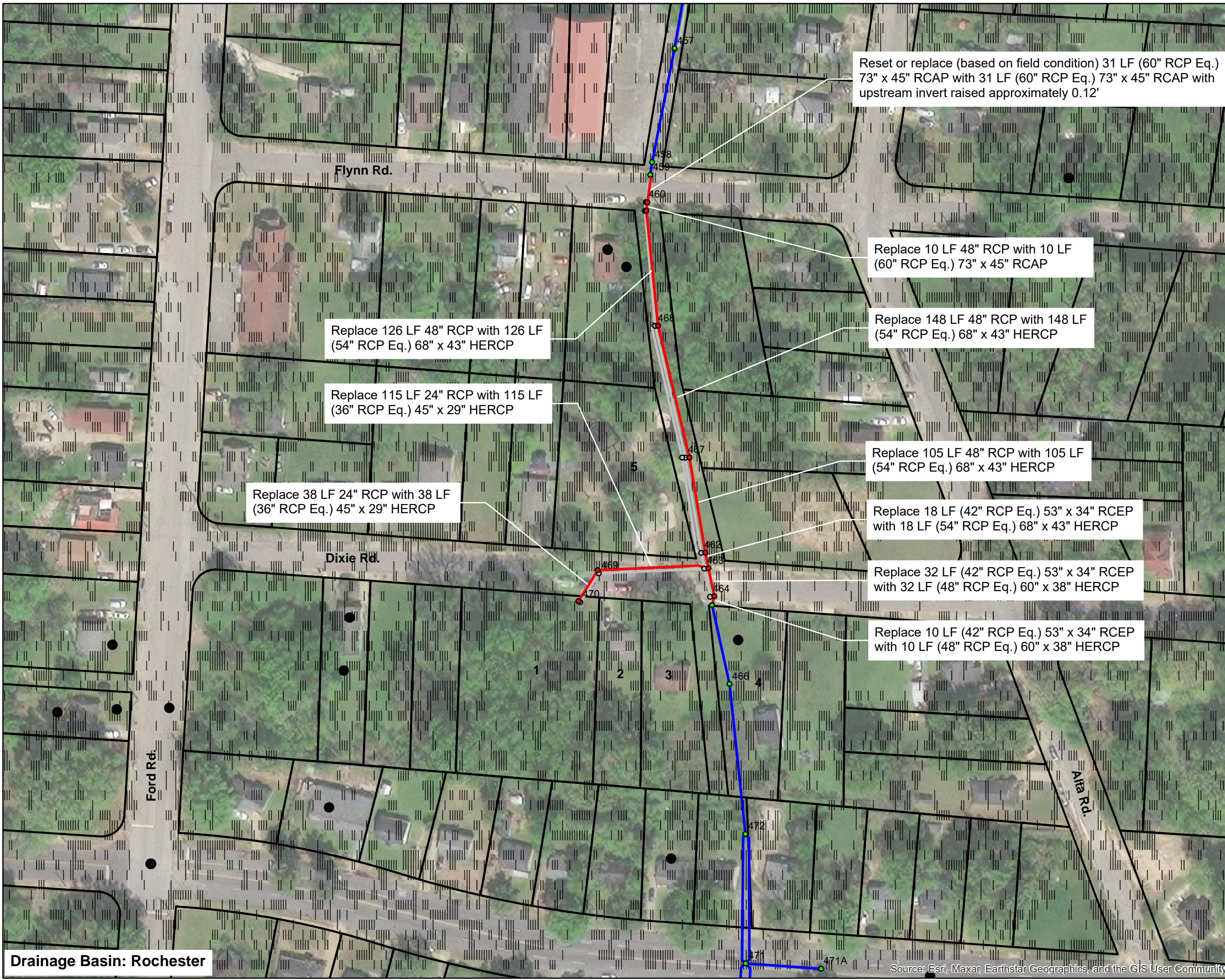
- Legend:**
- City of Memphis Flooding Reports
 - City of Memphis Parcels
- Junction**
- Active
 - Inactive
- Conduit**
- Active
 - Inactive
- Weir**
- Active
- Improved 100-Year Storm Inundation Depth (feet)**
- 0.01 - 0.5
 - 0.51 - 1
 - 1.01 - 2
 - 2.01 - 3
 - 3.01 - 4
- Existing 100-Year Storm Inundation Depth (feet)**
- 0.01 - 0.5
 - 0.51 - 1
 - 1.01 - 2
 - 2.01 - 3
 - 3.01 - 4
 - 4.01 - 5

Drainage Basin: Rochester

Esri, HERE, Garmin, (c) OpenStreetMap contributors, and the GIS user community, Source: Esri, Maxar, Earthstar Geographics, and the GIS User Community



▲ NORTH		1 inch = 75 feet
IA1 100-Year Existing vs. Improved		
Exhibit 45	15640750	June 2023
	Project No.	Date



- Legend:**
- City of Memphis Flooding Reports
 - ▭ City of Memphis Parcels
- Junction**
- Existing
 - Improved
 - Inactive
- Conduit**
- Existing
 - Improved
 - Inactive

- City of Memphis Parcel IDs:**
1. - 075016 00006
 2. - 075016 00007
 3. - 075016 00008
 4. - 075016 00009
 5. - 075015 00013

Drainage Basin: Rochester

Source: Esri, Maxar, Earthstar Geographics, and the GIS User Community



▲ NORTH		1 inch = 100 feet
IA2A Improvements		
Exhibit 46	15640750	June 2023
	Project No.	Date



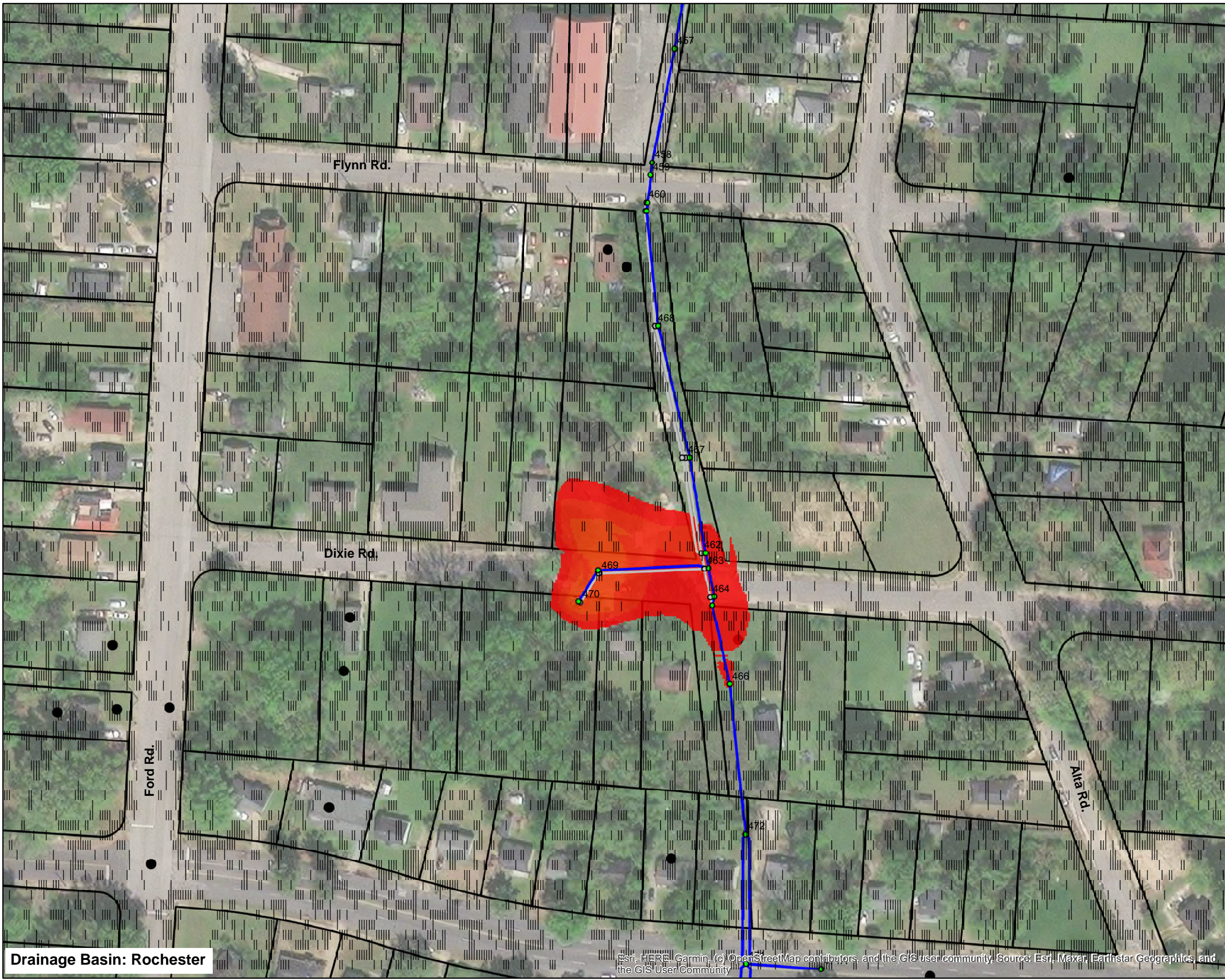
- Legend:**
- City of Memphis Flooding Reports
 - ▭ City of Memphis Parcels
- Junction**
- Active
 - Inactive
- Conduit**
- Active
 - Inactive
- Existing 10-Year Storm Inundation Depth (feet)**
- 0.01 - 0.5
 - 0.51 - 1

Drainage Basin: Rochester

Esri, HERE, Garmin, (c) OpenStreetMap contributors, and the GIS user community. Source: Esri, Maxar, Earthstar Geographics, and the GIS User Community



▲ NORTH		1 inch = 100 feet
IA2A 10-Year Existing vs. Improved		
Exhibit 47	15640750 Project No.	June 2023 Date



- Legend:**
- City of Memphis Flooding Reports
 - ▭ City of Memphis Parcels
- Junction**
- Active
 - Inactive
- Conduit**
- Active
 - Inactive
- Existing 100-Year Storm Inundation Depth (feet)**
- 0.01 - 0.5
 - 0.51 - 1
 - 1.01 - 2

Drainage Basin: Rochester

Esri, HERE, Garmin, (c) OpenStreetMap contributors, and the GIS user community. Source: Esri, Maxar, Earthstar Geographics, and the GIS User Community



▲ NORTH		1 inch = 100 feet
IA2A 100-Year Existing vs. Improved		
Exhibit 48	15640750	June 2023
	Project No.	Date



- Legend:**
- City of Memphis Flooding Reports
 - ▭ City of Memphis Parcels
 - Junction**
 - Existing
 - Improved
 - Inactive
 - Conduit**
 - Existing
 - Improved
 - Inactive
 - Weir**
 - Active
 - Additional Recommendations Outside of Modeling Scope

Replace 60 LF 24" RCP with 60 LF (36" RCP Eq.) 45" x 29" HERCP

Replace 25 LF (each) assumed 15" RCP with 25 LF (each) (24" RCP Eq.) 30" x 19" HERCP

Drainage Basin: Rochester



▲ NORTH		1 inch = 75 feet
IA2B Improvements		
Exhibit 49	15640750	June 2023
	Project No.	Date

Source: Esri, Maxar, Earthstar Geographics, and the GIS User Community



- Legend:**
- City of Memphis Flooding Reports
 - ▭ City of Memphis Parcels
- Junction**
- Active
 - Inactive
- Conduit**
- Active
 - Inactive
- Weir**
- Active
- Improved 10-Year Storm Inundation Depth (feet)**
- 0.01 - 0.5
 - 0.51 - 1
 - 1.01 - 2
 - 2.01 - 3
 - 3.01 - 4
- Existing 10-Year Storm Inundation Depth (feet)**
- 0.01 - 0.5
 - 0.51 - 1
 - 1.01 - 2
 - 2.01 - 3
 - 3.01 - 4

Drainage Basin: Rochester

Source: Esri, Maxar, Earthstar Geographics, and the GIS User Community



▲ NORTH		1 inch = 75 feet
IA2B 10-Year Existing vs. Improved		
Exhibit 50	15640750	June 2023
	Project No.	Date



- Legend:**
- City of Memphis Flooding Reports
 - ▭ City of Memphis Parcels
- Junction**
- Active
 - Inactive
- Conduit**
- Active
 - Inactive
- Weir**
- Active
- Improved 100-Year Storm Inundation**
- Depth (feet)**
- 0.01 - 0.5
 - 0.51 - 1
 - 1.01 - 2
 - 2.01 - 3
 - 3.01 - 4
 - 4.01 - 5
- Existing 100-Year Storm Inundation**
- Depth (feet)**
- 0.01 - 0.5
 - 0.51 - 1
 - 1.01 - 2
 - 2.01 - 3
 - 3.01 - 4
 - 4.01 - 5

Drainage Basin: Rochester

Source: Esri, Maxar, Earthstar Geographics, and the GIS User Community



▲ NORTH		1 inch = 75 feet
IA2B 100-Year Existing vs. Improved		
Exhibit 51	15640750 Project No.	June 2023 Date



- Legend:**
- City of Memphis Flooding Reports
 - ▭ City of Memphis Parcels
- Junction**
- Existing
 - Improved
 - Inactive
- Conduit**
- Existing
 - Improved
 - Inactive
- Additional Recommendations Outside of Modeling Scope

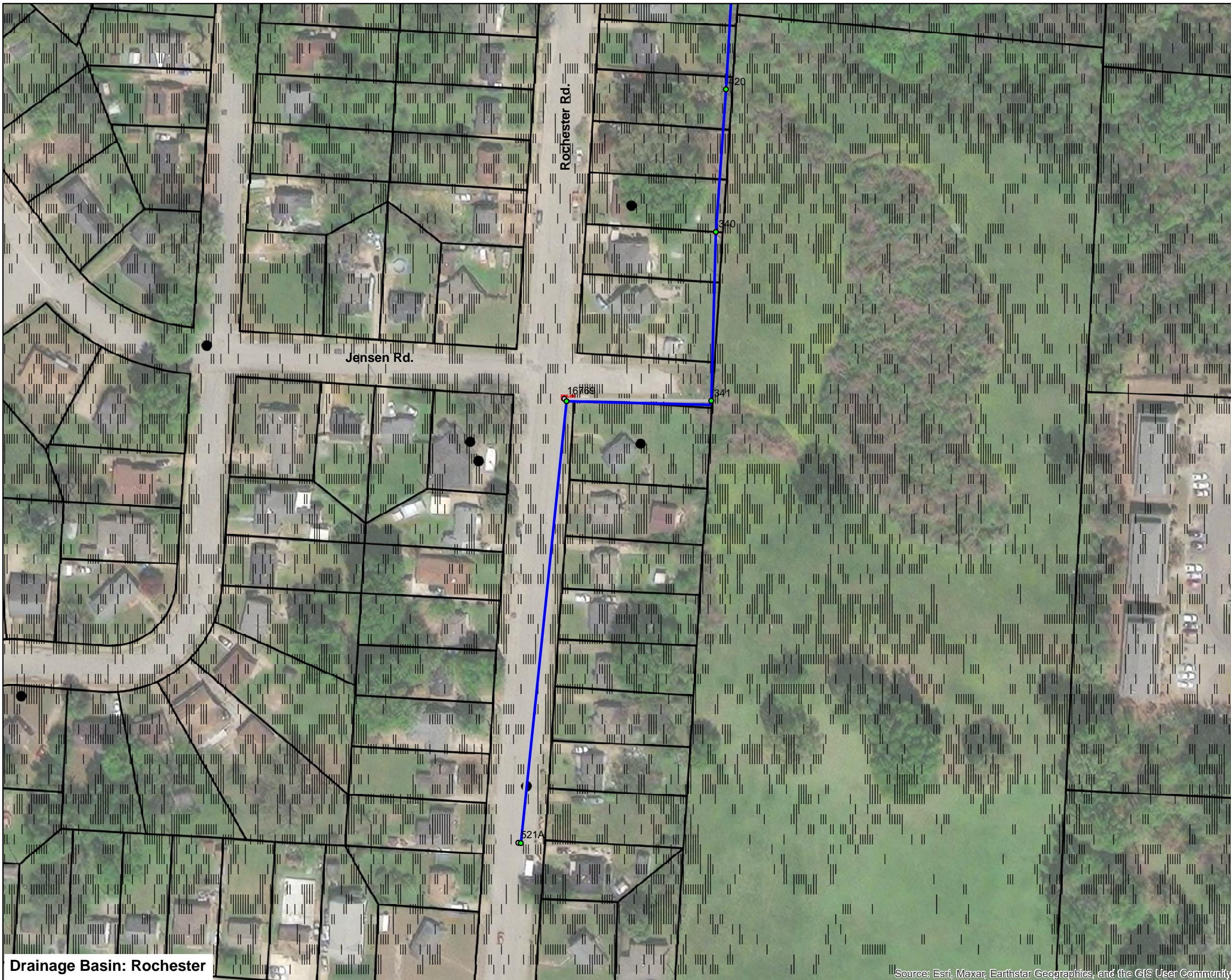
City of Memphis Parcel IDs:
1. - 075057 00066

Drainage Basin: Rochester

Source: Esri, Maxar, Earthstar Geographics, and the GIS User Community



▲ NORTH	1 inch = 100 feet	
IA3 Improvements		
Exhibit 52	15640750 Project No.	June 2023 Date



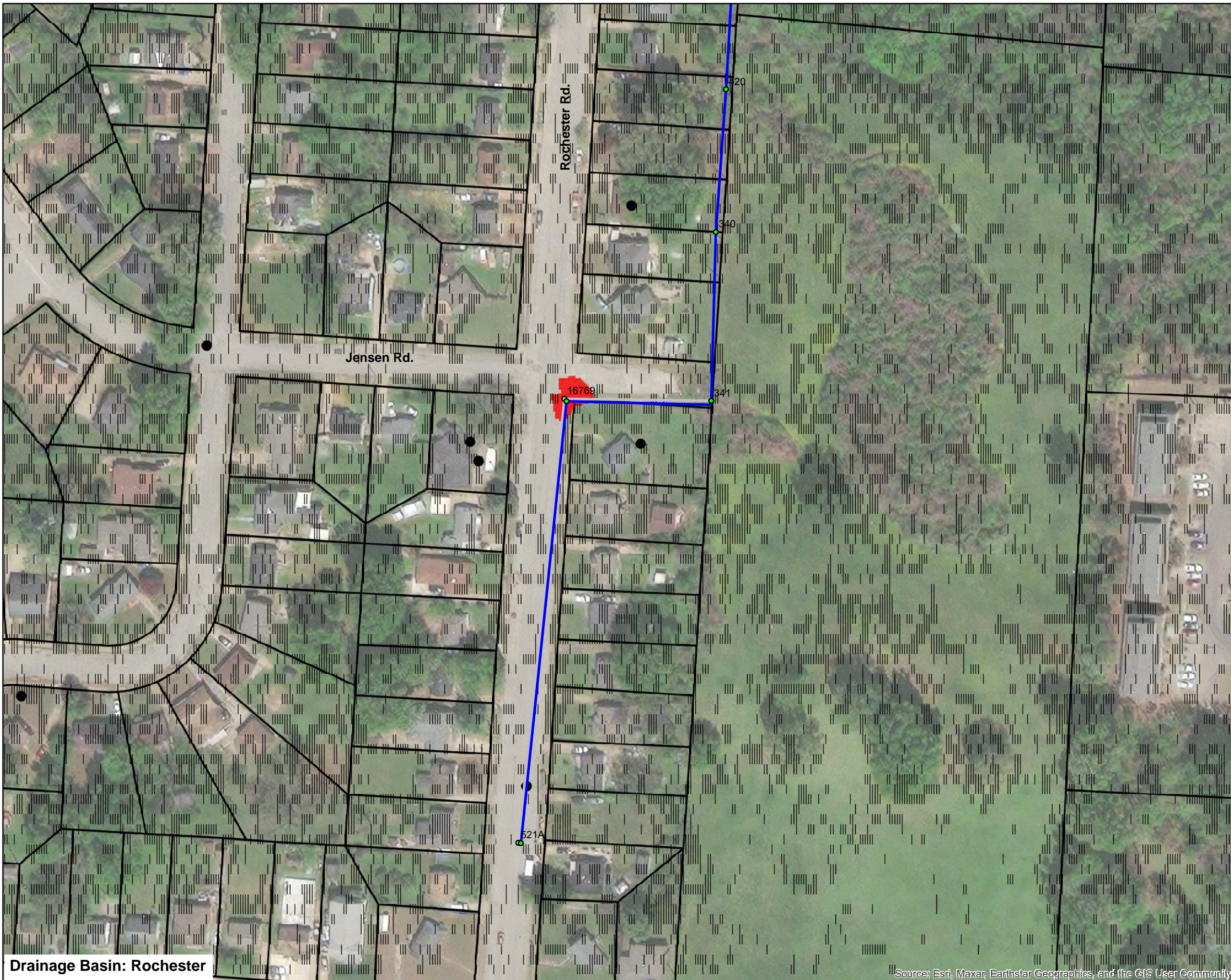
- Legend:**
- City of Memphis Flooding Reports
 - ▭ City of Memphis Parcels
- Junction**
- Active
 - Inactive
- Conduit**
- Active
 - Inactive
- Existing 10-Year Storm Inundation Depth (feet)**
- 0.01 - 0.5

Drainage Basin: Rochester

Source: Esri, Maxar, Earthstar Geographics, and the GIS User Community



▲ NORTH		1 inch = 100 feet
IA3 10-Year Existing vs. Improved		
Exhibit 53	15640750 Project No.	June 2023 Date



- Legend:**
- City of Memphis Flooding Reports
 - ▭ City of Memphis Parcels
- Junction**
- Active
 - Inactive
- Conduit**
- Active
 - Inactive
- Existing 100-Year Storm Inundation Depth (feet)**
- 0.01 - 0.5

Drainage Basin: Rochester

Source: Esri, Maxar, Earthstar Geographics, and the GIS User Community



▲ NORTH		1 inch = 100 feet
IA3 100-Year Existing vs. Improved		
Exhibit 54	15640750 Project No.	June 2023 Date