

- Legend:**
- City of Memphis Flooding Reports
  - ▭ City of Memphis Parcels
- Junction**
- Existing
  - Improved
  - Inactive
- Conduit**
- Existing
  - Improved
  - Inactive
- Additional Recommendations Outside of Modeling Scope

**City of Memphis Parcel IDs:**

1. - 075007 00025C
2. - 075007 00049

Replace 207 LF 24" RCP with 207 LF (36" RCP Eq.) 45" x 29" HERCP

Replace 51 LF 24" RCP with 51 LF (36" RCP Eq.) 45" x 29" HERCP

Replace 47 LF 18" RCP with 47 LF (24" RCP Eq.) 30" x 19" HERCP

Replace 72 LF 18" RCP with 72 LF (24" RCP Eq.) 30" x 19" HERCP

Replace 64 LF 18" RCP with 64 LF (24" RCP Eq.) 30" x 19" HERCP

Replace 110 LF 24" RCP with 110 LF (36" RCP Eq.) 45" x 29" HERCP

Drainage Basin: Red Budd

Source: Esri, Maxar, Earthstar Geographics, and the GIS User Community



▲ NORTH		1 inch = 100 feet
IA4 Improvements		
Exhibit 55	15640750	June 2023
	Project No.	Date



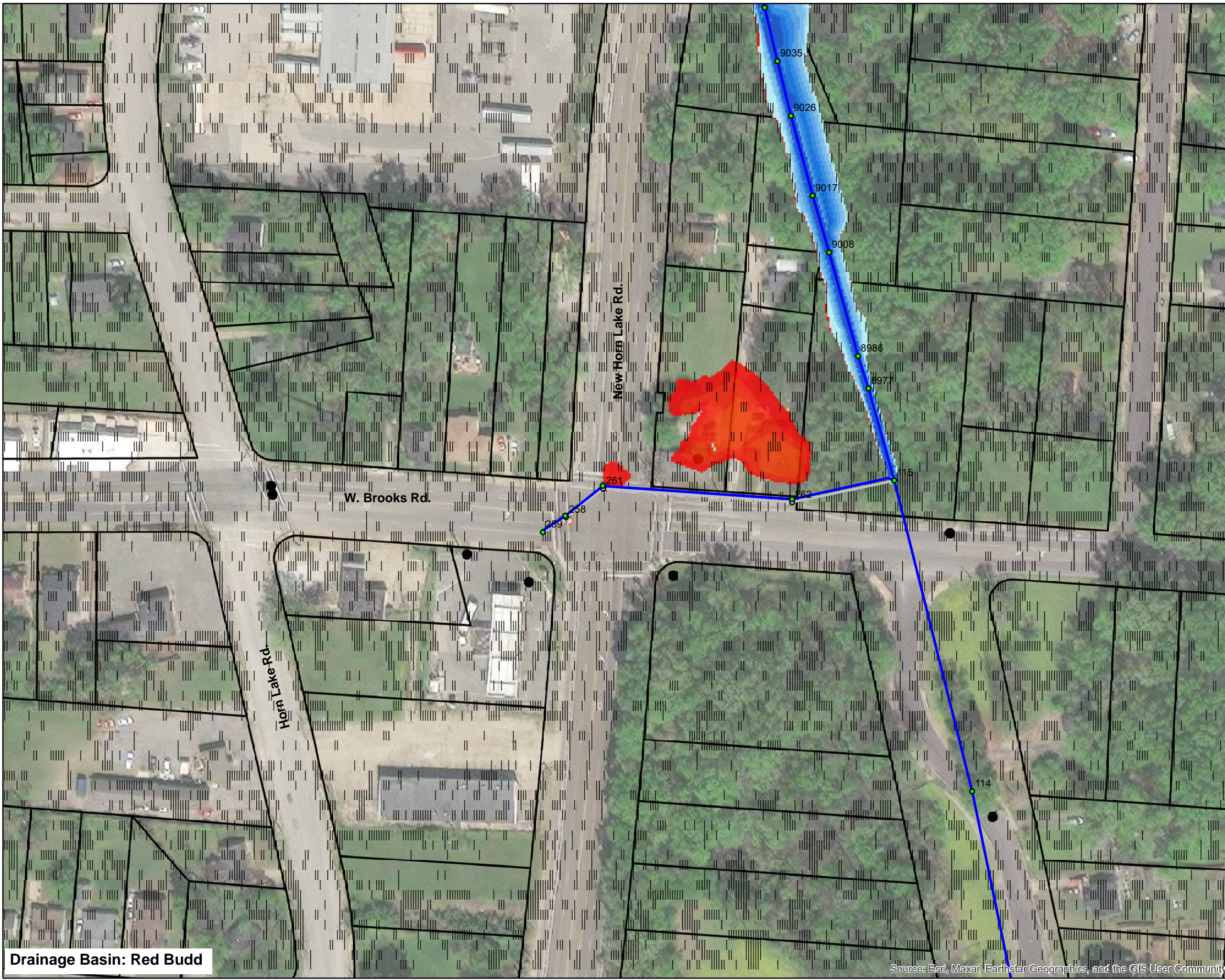
- Legend:**
- City of Memphis Flooding Reports
  - ▭ City of Memphis Parcels
- Junction**
- Active
  - Inactive
- Conduit**
- Active
  - Inactive
- Improved 10-Year Storm Inundation**
- Depth (feet)**
- 0.01 - 0.5
  - 0.51 - 1
  - 1.01 - 2
  - 2.01 - 3
  - 3.01 - 4
  - 4.01 - 5
  - 5.01 - 10
- Existing 10-Year Storm Inundation**
- Depth (feet)**
- 0.01 - 0.5
  - 0.51 - 1
  - 1.01 - 2
  - 2.01 - 3
  - 3.01 - 4
  - 4.01 - 5
  - 5.01 - 10

Drainage Basin: Red Budd

Source: Esri, Maxar, Earthstar Geographics, and the GIS User Community



▲ NORTH		1 inch = 100 feet
IA4 10-Year Existing vs. Improved		
Exhibit 56	15640750	June 2023
	<small>Project No.</small>	<small>Date</small>



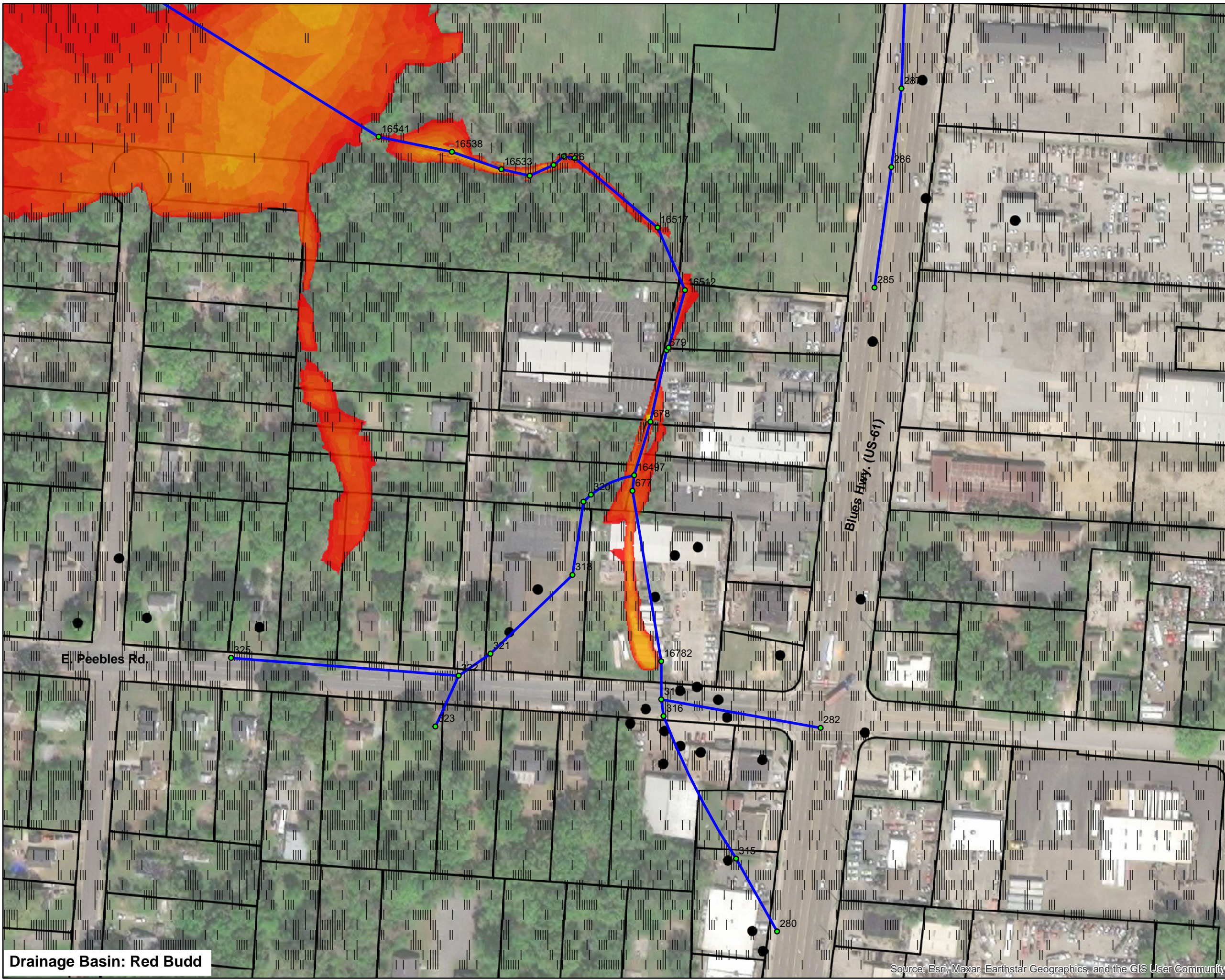
- Legend:**
- City of Memphis Flooding Reports
  - ▭ City of Memphis Parcels
- Junction**
- Active
  - Inactive
- Conduit**
- Active
  - Inactive
- Improved 100-Year Storm Inundation**
- Depth (feet)**
- 0.01 - 0.5
  - 0.51 - 1
  - 1.01 - 2
  - 2.01 - 3
  - 3.01 - 4
  - 4.01 - 5
  - 5.01 - 10
- Existing 100-Year Storm Inundation**
- Depth (feet)**
- 0.01 - 0.5
  - 0.51 - 1
  - 1.01 - 2
  - 2.01 - 3
  - 3.01 - 4
  - 4.01 - 5
  - 5.01 - 10

Drainage Basin: Red Budd

Source: Esri, Maxar, Earthstar Geographics, and the GIS User Community



▲ NORTH		1 inch = 100 feet
IA4 100-Year Existing vs. Improved		
Exhibit 57	15640750	June 2023
	Project No.	Date



**Legend:**

- City of Memphis Flooding Reports
- ▭ City of Memphis Parcels

**Junction**

- Active

**Conduit**

- Active

**Existing 10-Year Storm Inundation**

**Depth (feet)**

- 0.01 - 0.5
- 0.51 - 1
- 1.01 - 2
- 2.01 - 3
- 3.01 - 4
- 4.01 - 5
- 5.01 - 10
- 15.01 - 20
- 20.01 - 24

Drainage Basin: Red Budd

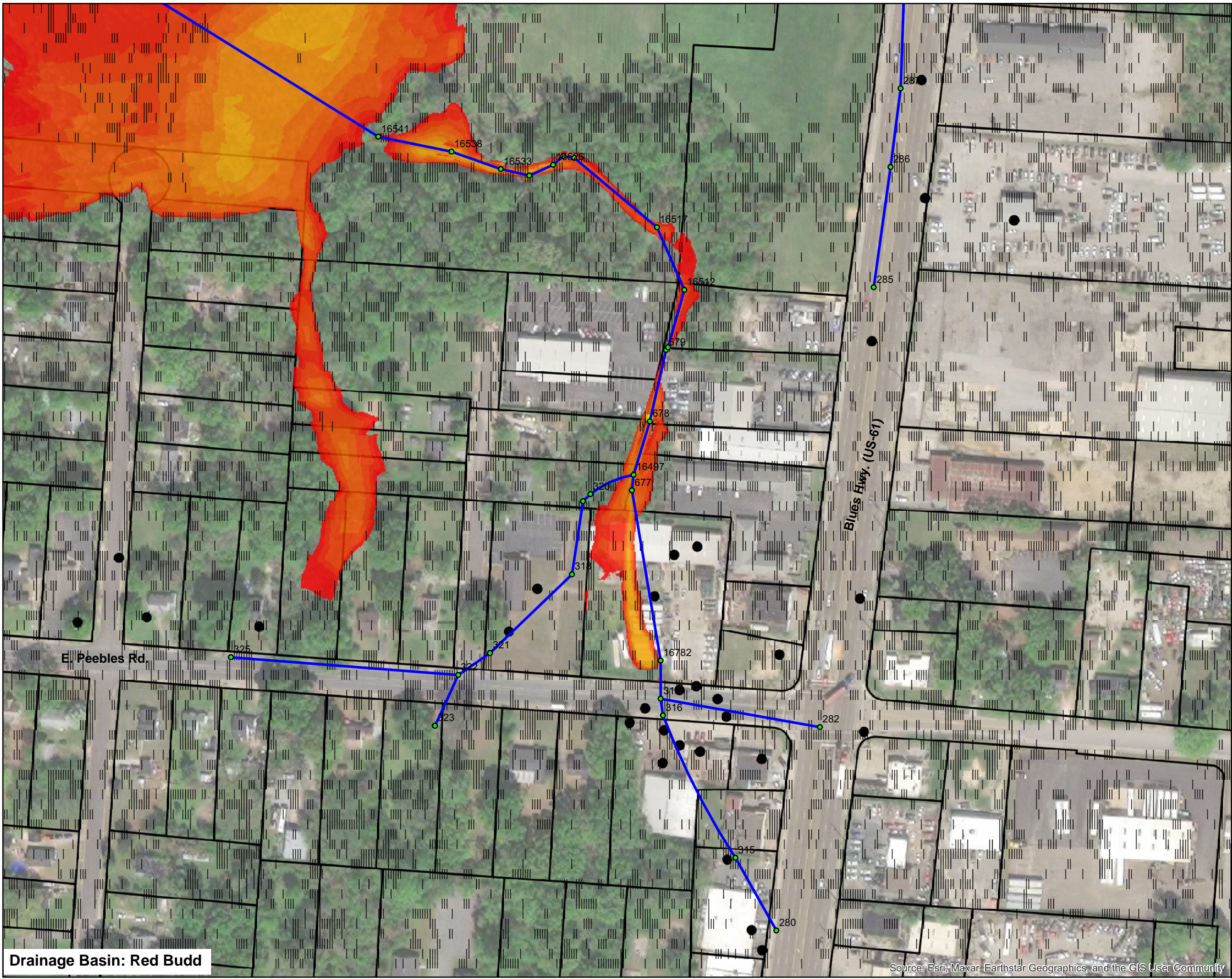


▲ NORTH 1 inch = 150 feet

IA5 10-Year Existing

Exhibit 58	15640750	June 2023
	Project No.	Date

Source: Esri, Maxar, Earthstar Geographics, and the GIS User Community



**Legend:**

- City of Memphis Flooding Reports
- ▭ City of Memphis Parcels

**Junction**

- Active

**Conduit**

- Active

**Existing 100-Year Storm Inundation**

**Depth (feet)**

- 0.01 - 0.5
- 0.51 - 1
- 1.01 - 2
- 2.01 - 3
- 3.01 - 4
- 4.01 - 5
- 5.01 - 10
- 15.01 - 20
- 20.01 - 24

Drainage Basin: Red Budd

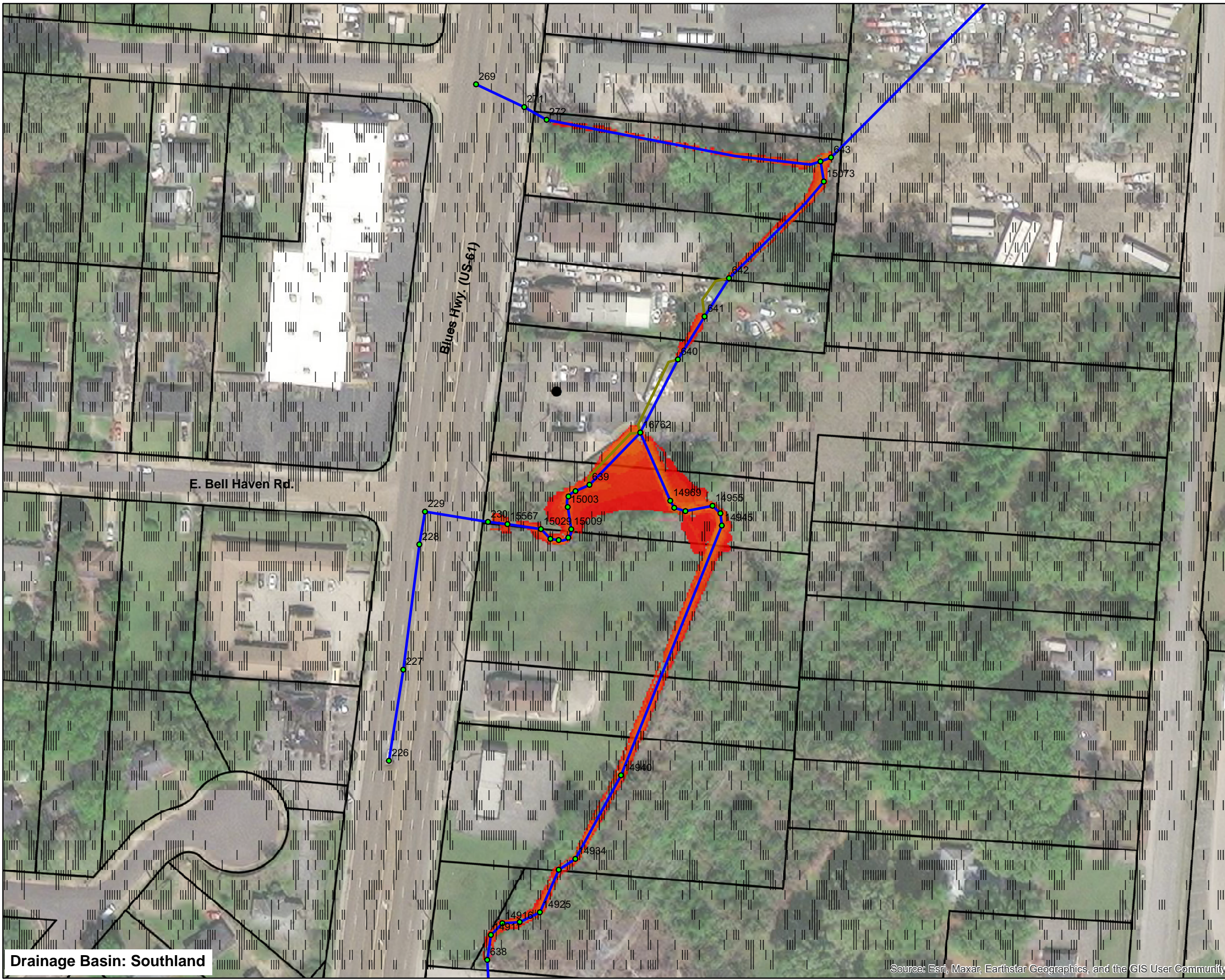


▲ NORTH      1 inch = 150 feet

IA5 100-Year Existing

Exhibit 59	15640750	June 2023
	Project No.	Date

Source: Esri, Maxar, Earthstar Geographics, and the GIS User Community



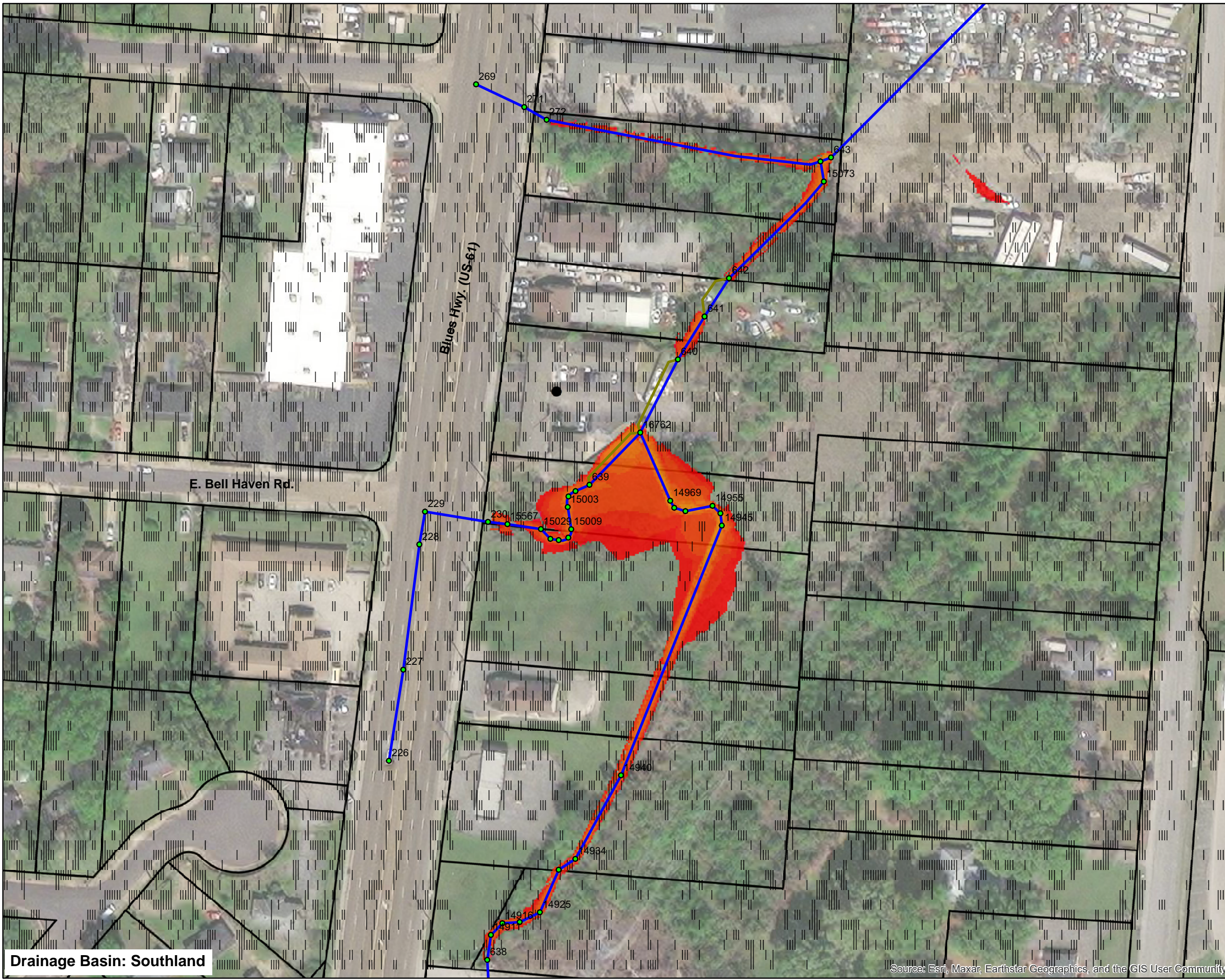
- Legend:**
- City of Memphis Flooding Reports
  - ▭ City of Memphis Parcels
  - Junction**
  - Active
  - Conduit**
  - Active
  - Weir**
  - Active
  - Existing 10-Year Storm Inundation Depth (feet)**
  - 0.01 - 0.5
  - 0.51 - 1
  - 1.01 - 2
  - 2.01 - 3
  - 3.01 - 4
  - 4.01 - 5

**Drainage Basin: Southland**

Source: Esri, Maxar, Earthstar Geographics, and the GIS User Community



▲ NORTH		1 inch = 100 feet
IA6 10-Year Existing		
Exhibit 60	15640750	June 2023
	Project No.	Date



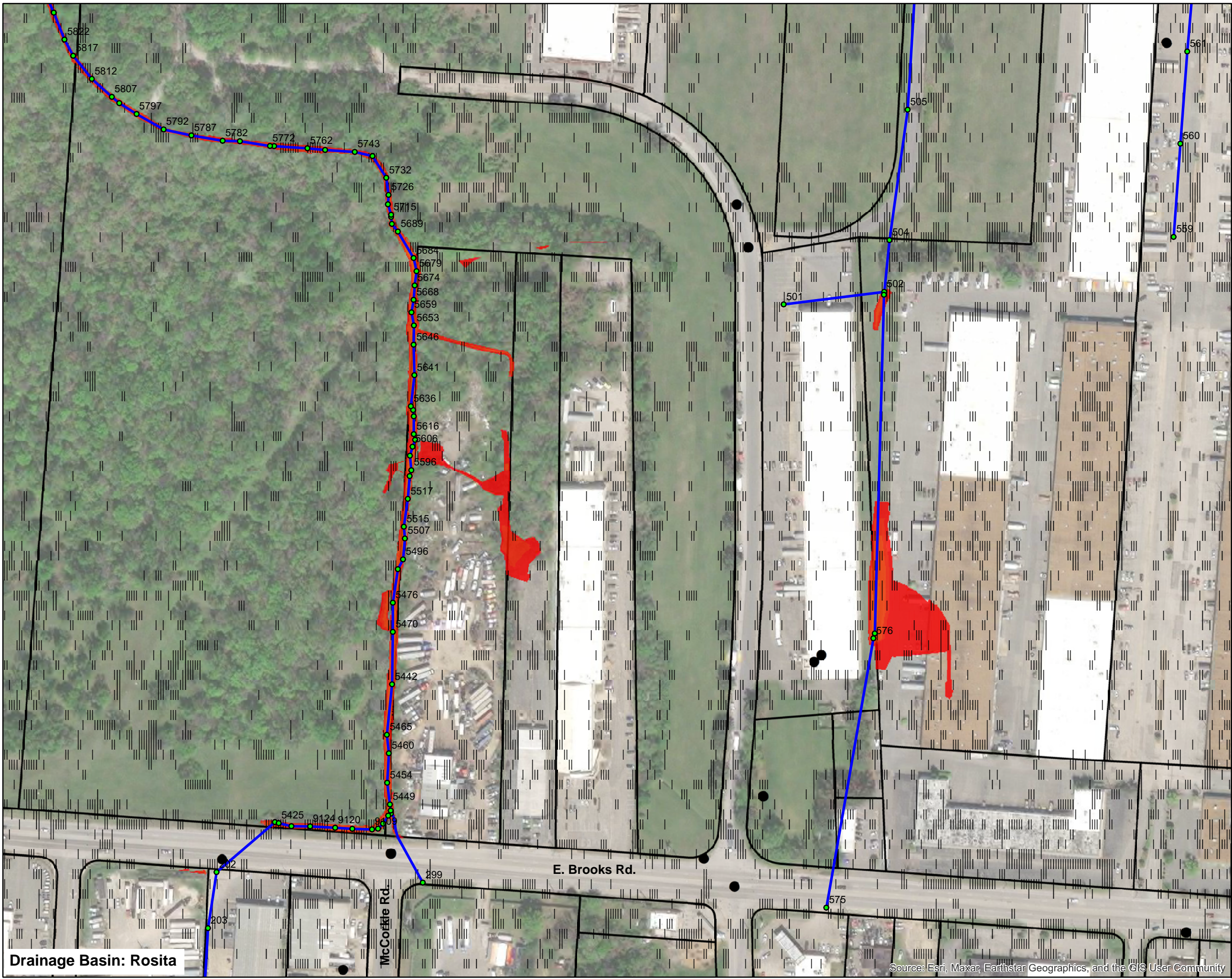
- Legend:**
- City of Memphis Flooding Reports
  - ▭ City of Memphis Parcels
  - Junction**
  - Active
  - Conduit**
  - Active
  - Weir**
  - Active
  - Existing 100-Year Storm Inundation**
  - Depth (feet)**
  - 0.01 - 0.5
  - 0.51 - 1
  - 1.01 - 2
  - 2.01 - 3
  - 3.01 - 4
  - 4.01 - 5
  - 5.01 - 10

**Drainage Basin: Southland**

Source: Esri, Maxar, Earthstar Geographics, and the GIS User Community



▲ NORTH		1 inch = 100 feet
IA6 100-Year Existing		
Exhibit 61	15640750 Project No.	June 2023 Date



- Legend:**
- City of Memphis Flooding Reports
  - ▭ City of Memphis Parcels
  - Junction**
  - Active
  - Conduit**
  - Active
  - Existing 10-Year Storm Inundation Depth (feet)**
  - 0.01 - 0.5
  - 0.51 - 1
  - 1.01 - 2
  - 2.01 - 3
  - 3.01 - 4

Drainage Basin: Rosita

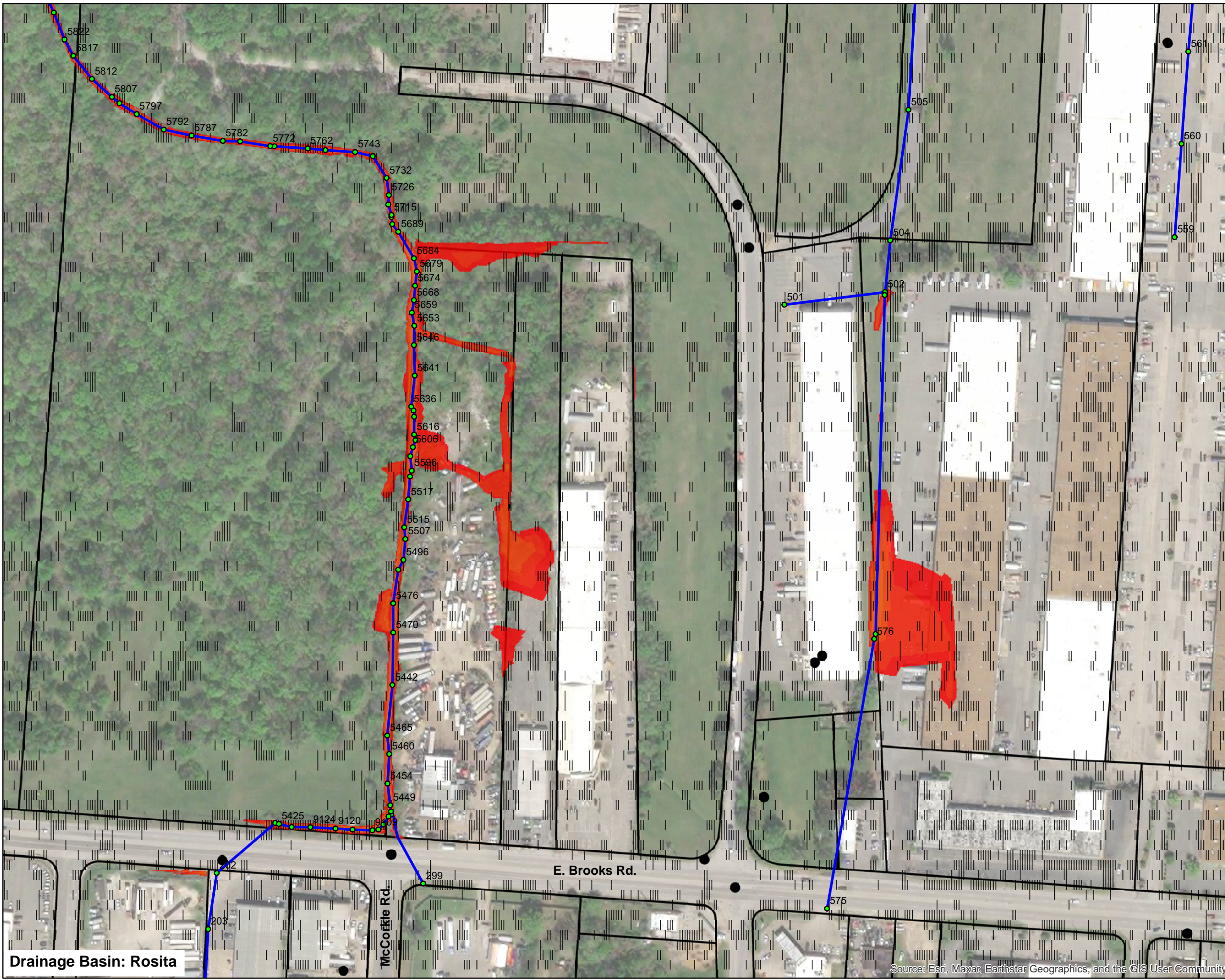
McCookle Rd.

E. Brooks Rd.



▲ NORTH		1 inch = 200 feet
IA7 10-Year Existing		
Exhibit 62	15640750	June 2023
	Project No.	Date

Source: Esri, Maxar, Earthstar Geographics, and the GIS User Community



**Legend:**

- City of Memphis Flooding Reports
- City of Memphis Parcels

**Junction**

- Active

**Conduit**

- Active

**Existing 100-Year Storm Inundation Depth (feet)**

- 0.01 - 0.5
- 0.51 - 1
- 1.01 - 2
- 2.01 - 3
- 3.01 - 4
- 4.01 - 5

Drainage Basin: Rosita

McCordle Rd.

E. Brooks Rd.

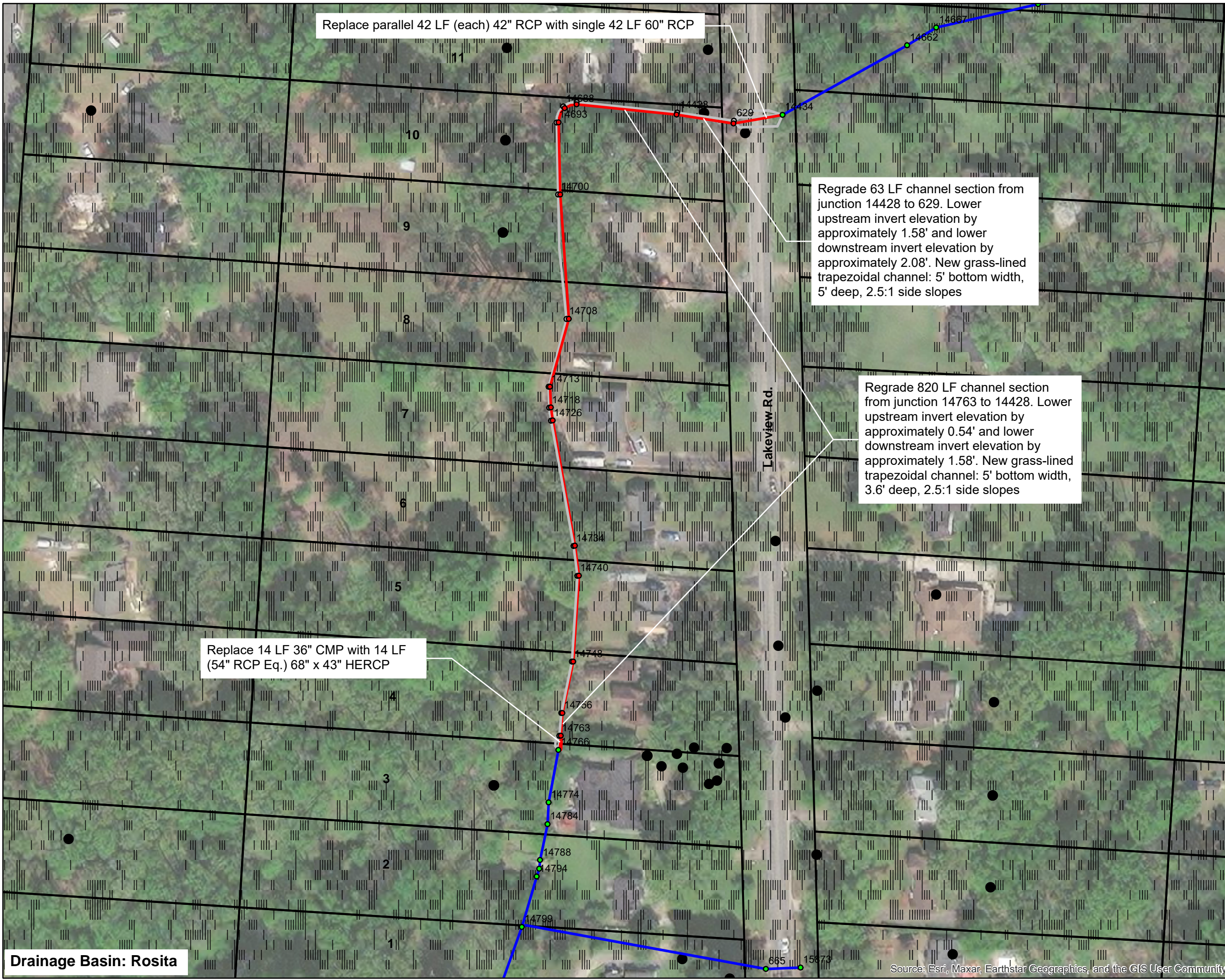


▲ NORTH 1 inch = 200 feet

IA7 100-Year Existing

Exhibit 63	15640750	June 2023
	Project No.	Date

Source: Esri, Maxar, Earthstar Geographics, and the GIS User Community



Replace parallel 42 LF (each) 42" RCP with single 42 LF 60" RCP

Regrade 63 LF channel section from junction 14428 to 629. Lower upstream invert elevation by approximately 1.58' and lower downstream invert elevation by approximately 2.08'. New grass-lined trapezoidal channel: 5' bottom width, 5' deep, 2.5:1 side slopes

Regrade 820 LF channel section from junction 14763 to 14428. Lower upstream invert elevation by approximately 0.54' and lower downstream invert elevation by approximately 1.58'. New grass-lined trapezoidal channel: 5' bottom width, 3.6' deep, 2.5:1 side slopes

Replace 14 LF 36" CMP with 14 LF (54" RCP Eq.) 68" x 43" HERCP

**Legend:**

- City of Memphis Flooding Reports
- ▭ City of Memphis Parcels
- Junction**
- Existing
- Improved
- Inactive
- Conduit**
- Existing
- Improved
- Inactive
- Weir**
- Domain
- Inactive

**City of Memphis Parcel IDs:**

1. - 077005 00052
2. - 077005 00022
3. - 077005 00021
4. - 077005 00020
5. - 077005 00019
6. - 077005 00018
7. - 077005 00017
8. - 077005 00016
9. - 077005 00015
10. - 077005 00014
11. - 077005 00013



▲ NORTH 1 inch = 100 feet

IA8A Improvements

Exhibit 64	15640750	June 2023
	Project No.	Date

Source: Esri, Maxar, Earthstar Geographics, and the GIS User Community

Drainage Basin: Rosita



- Legend:**
- City of Memphis Flooding Reports
  - ▭ City of Memphis Parcels
  - Junction**
    - Active
    - Inactive
  - Conduit**
    - Active
    - Inactive
  - Weir**
    - Active
    - Inactive
  - Improved 10-Year Storm Inundation Depth (feet)**
    - 0.01 - 0.5
    - 0.51 - 1
    - 1.01 - 2
    - 2.01 - 3
  - Existing 10-Year Storm Inundation Depth (feet)**
    - 0.01 - 0.5
    - 0.51 - 1
    - 1.01 - 2
    - 2.01 - 3
    - 3.01 - 4

**Drainage Basin: Rosita**



▲ NORTH		1 inch = 100 feet	
IA8A 10-Year Existing vs. Improved			
Exhibit 65	15640750	June 2023	
	Project No.	Date	

Source: Esri, Maxar, Earthstar Geographics, and the GIS User Community



**Legend:**

- City of Memphis Flooding Reports
- ▭ City of Memphis Parcels

**Junction**

- Active
- Inactive

**Conduit**

- Active
- Inactive

**Weir**

- Active
- Inactive

**Improved 100-Year Storm Inundation Depth (feet)**

- 0.01 - 0.5
- 0.51 - 1
- 1.01 - 2
- 2.01 - 3
- 3.01 - 4

**Existing 100-Year Storm Inundation Depth (feet)**

- 0.01 - 0.5
- 0.51 - 1
- 1.01 - 2
- 2.01 - 3
- 3.01 - 4
- 4.01 - 5

Drainage Basin: Rosita

Source: Esri, Maxar, Earthstar Geographics, and the GIS User Community



▲ NORTH 1 inch = 100 feet

IA8A 100-Year Existing vs. Improved

Exhibit 66	15640750	June 2023
	Project No.	Date